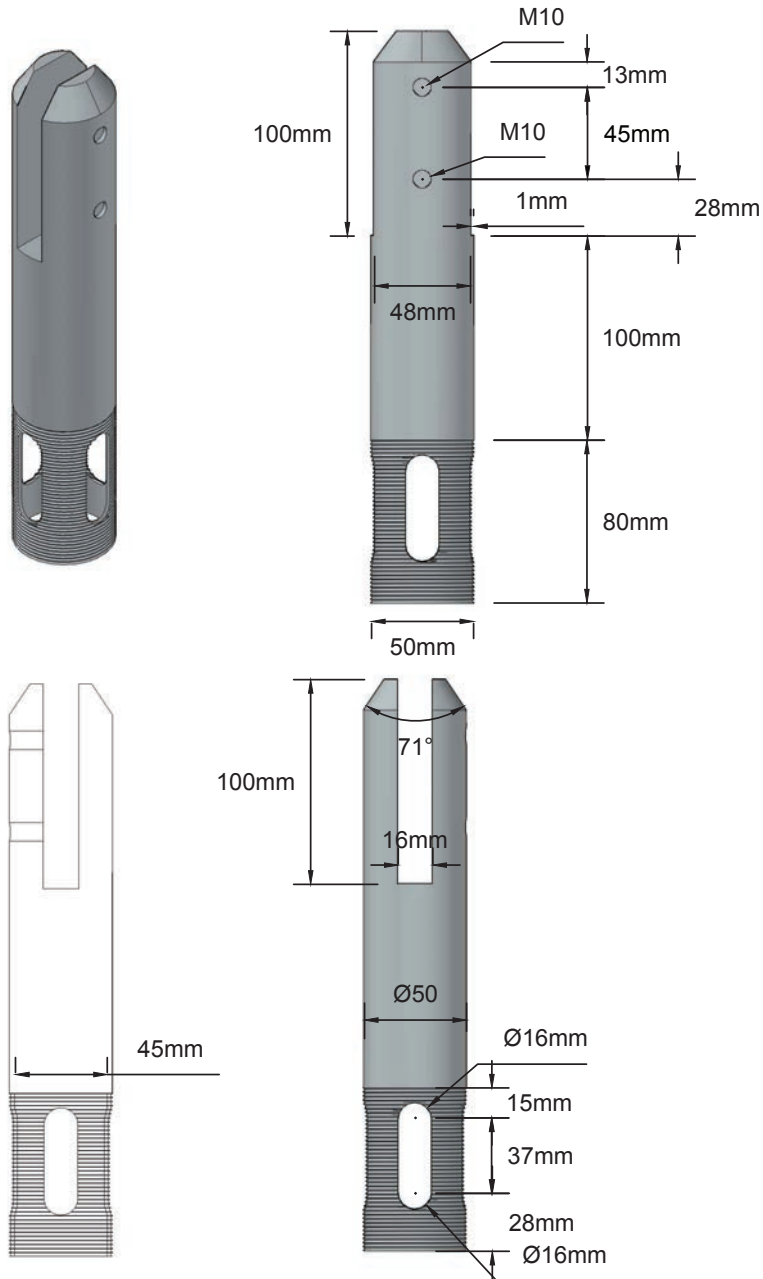


FSCDRDM/FSCDRDS Core Drill Round Spigot



AVAILABLE FINISHES

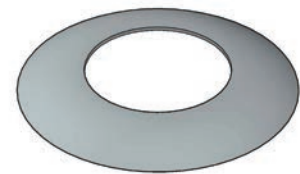
- Mirror
- Satin

TECHNICAL DETAILS

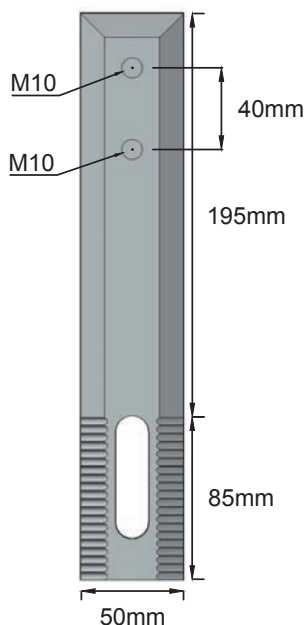
- Duplex 2205 Stainless Steel
- Friction fit
- Diameter 50 x 280mm
- Available in round with hole in glass

Spigot Round Cover

Diameter 100mm



FSSQCDM/FSSQCDS Core Drill Square Spigot



AVAILABLE FINISHES

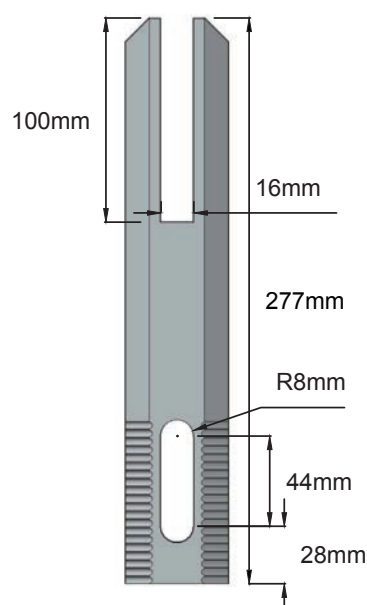
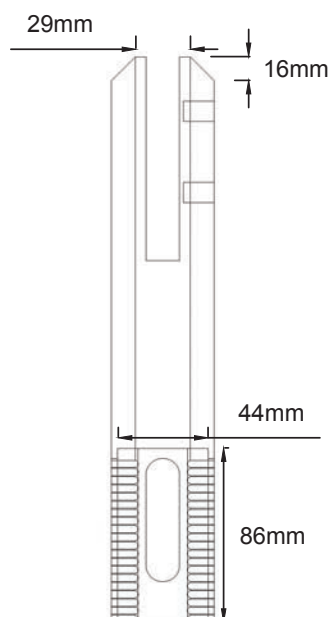
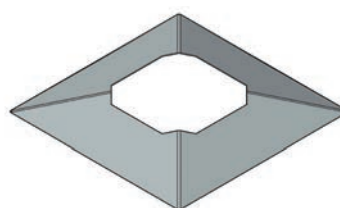
- Mirror
- Satin
- Black
- Non Conductive Silver
- Non Conductive Black

TECHNICAL DETAILS

- Duplex 2205 Stainless Steel
- Friction fit
- 50 x 48 x 280mm
- Available in round with hole in glass

Spigot Square Cover

Dimensions: 100mm x 100mm

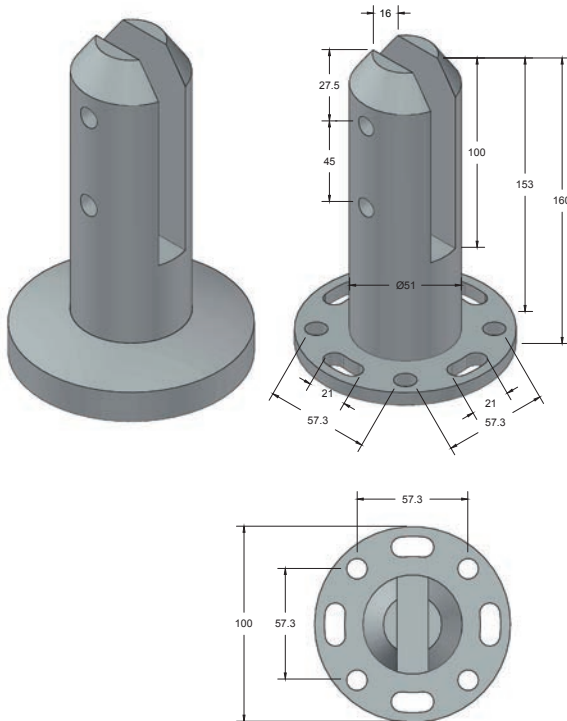


ALL NEW

NON-CONDUCTIVE
POWDER COATING
POOL FENCING SPIGOT

Certified compliant with AS3000 by
NATA accredited lab.

FSBMRDM/FSBMRDS Base Mount Round Spigot



AVAILABLE FINISHES

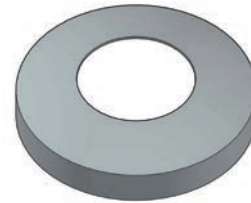
- Mirror
- Satin

TECHNICAL DETAILS

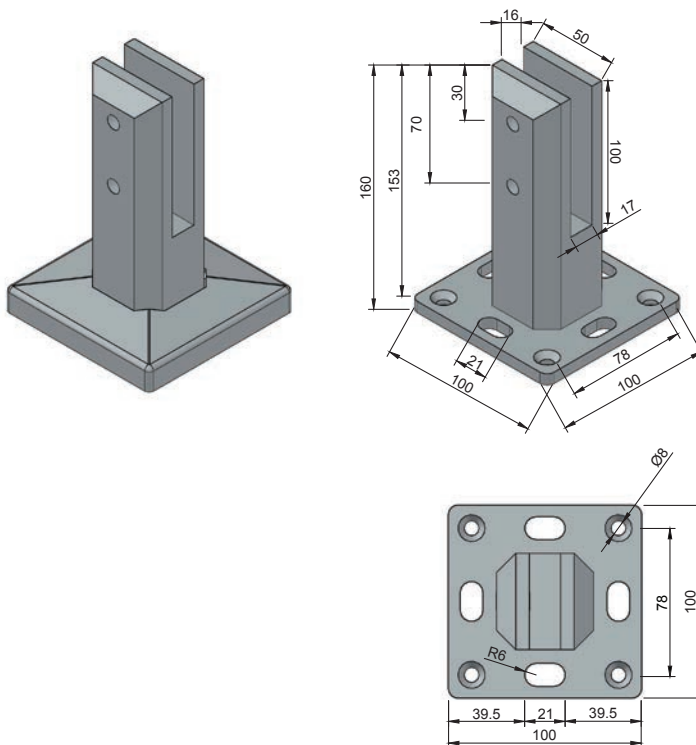
- Duplex 2205 Stainless Steel
- Friction fit
- Diameter 50 x 180mm
- Available in round with hole in glass

Spigot Round Cover

Diameter 105mm



FSBMSQM/FSBMSQS Base Mount Square Spigot



AVAILABLE FINISHES

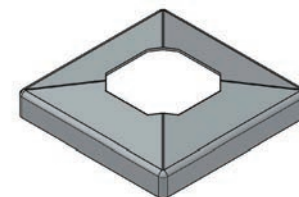
- Mirror
- Satin
- Black

TECHNICAL DETAILS

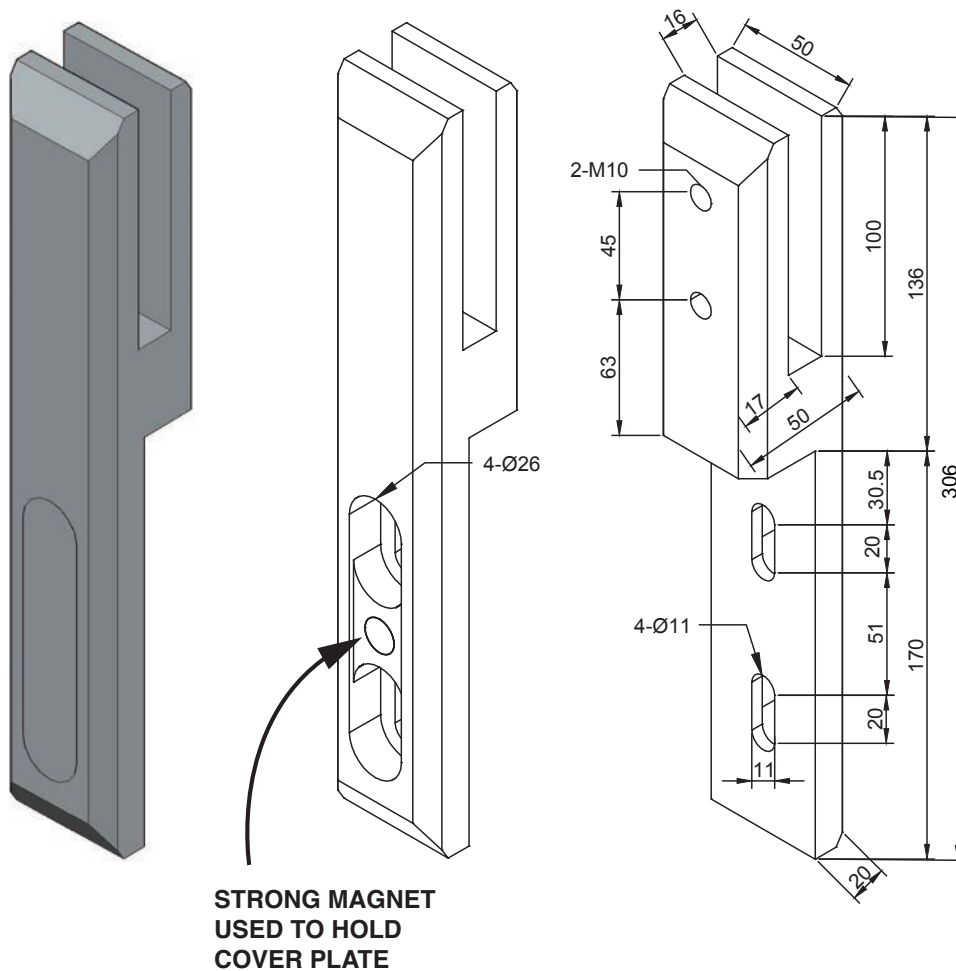
- Duplex 2205 Stainless Steel
- Friction fit
- 50 x 48 x 180mm
- Available in round with hole in glass

Spigot Square Cover

105 x 105mm



GHA Corner Fix – Friction Fit



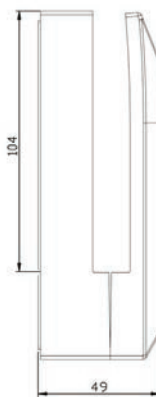
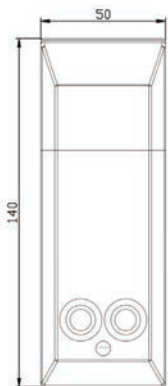
AVAILABLE FINISHES

- Mirror
- Satin
- Black

TECHNICAL DETAILS

- 12mm glass
- Duplex 2205 Stainless Steel

GHA Side Mount – Adjustable



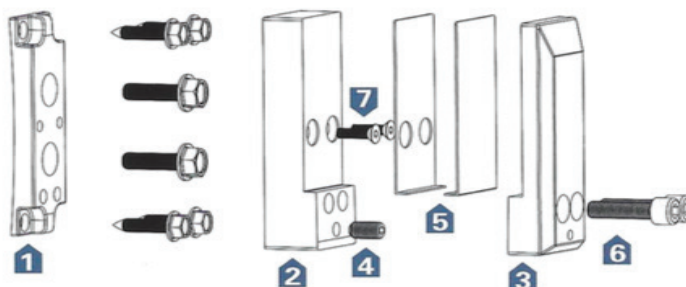
AVAILABLE FINISHES

- Mirror
- Satin

TECHNICAL DETAILS

- Adjustable body
- Friction fit
- NO holes needed in glass

- 1 Wall bracket
- 2 Adjustable body
- 3 Surface cover
- 4 Adjustment grub screw
- 5 Spacers
- 6 Threaded bolts
- 7 Countersunk screws



INSTALLATION INSTRUCTIONS

Step 1. Drill and fix the wall bracket

Using the wall bracket to mark out the hole positions, and drill holes accordingly. Then fix the Wall Bracket on the wall and tighten firmly.

Step 2. Fix the adjustable body

Using countersunk screws to fix the adjustable body to wall bracket, and tighten with Allen Key.

Step 3. Fix the surface cover on wall bracket.

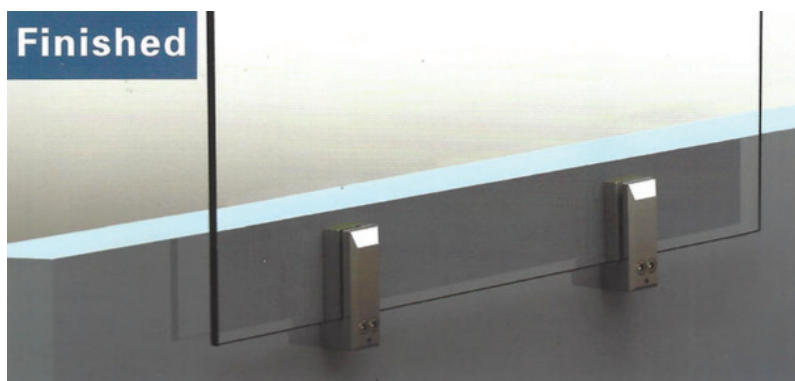
Put surface cover on wall bracket. Don't tighten too firmly as glass needs room to be inserted.

Step 4. Install the glass panel

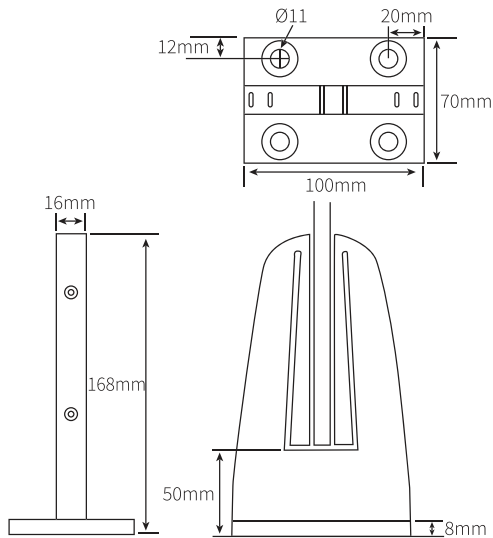
Insert glass panel inside GHA Side Mount Spigot, and adjust the glass panel to make it plumb.

A. To deflect inward, turn clockwise the adjustment grub screw to secure glass panel in place then tighten firmly the threaded bolts.

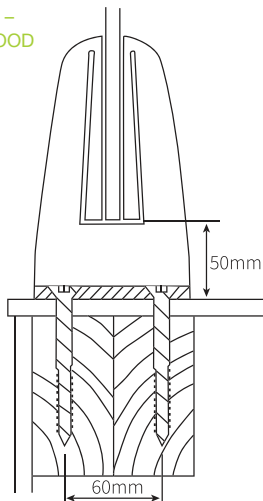
B. To deflect outward, turn anti-clockwise the adjustment grub screw to secure glass panel in place then tighten firmly the threaded bolts.



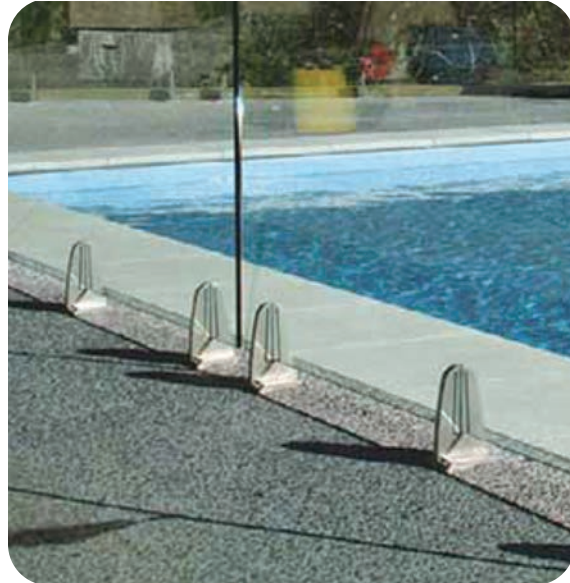
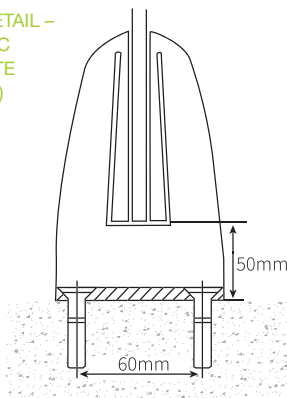
NBF168 Nautech Strut Post Base Fix



FIXING DETAIL –
DOMESTIC WOOD
FIX (CSW100)



FIXING DETAIL –
DOMESTIC
CONCRETE
FIX (MF43)



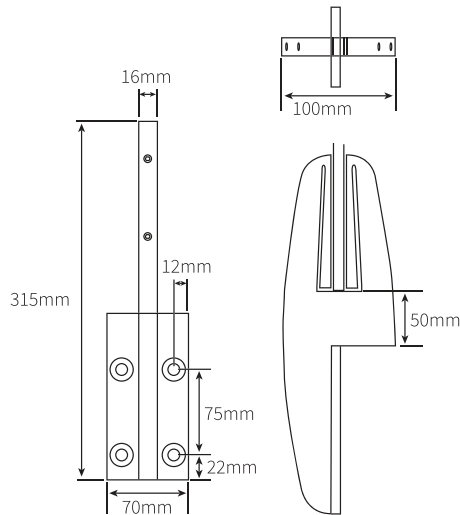
AVAILABLE FINISHES

- Polished Stainless
- Satin Stainless

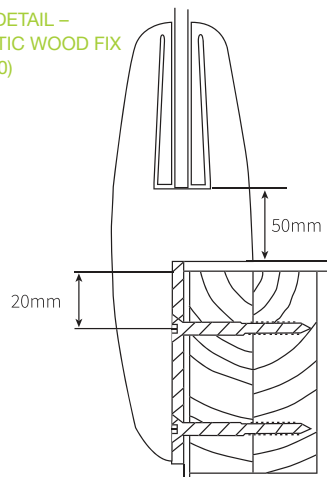
TECHNICAL DETAILS

- The system is a unique strut post design which is unobtrusive, strong and durable
- The system features horizontal and vertical adjustment for the glass
- The vertical adjustment is attained by the use of a patented clamping and adjustment technique which is the heart of the fitting, it clamps the glass without the need for holes and this saves on glass processing costs and installation time
- The strut post is 168mm high and provides a 50mm clearance between the top of the deck and underside of the glass pane
- The NauTech system has been tested in NZ to AS/NZS 1170 barrier loadings in accordance with B1/VM1 Amendment
- Suits 12mm glass thickness (no holes or cutouts required)
- Domestic and commercial balustrades and pool fences
- Base fixing to masonry, timber and steel structures
- 16mm thick 316 grade stainless steel

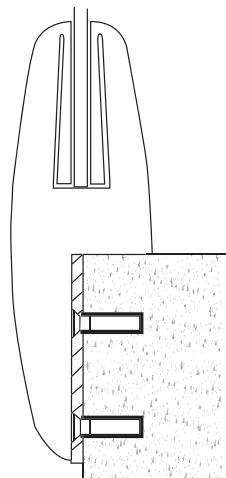
NSF315 Nautech Strut Post Face Fix



FIXING DETAIL –
DOMESTIC WOOD FIX
(CSW100)



FIXING DETAIL –
DOMESTIC
CONCRETE
FIX (MF43)



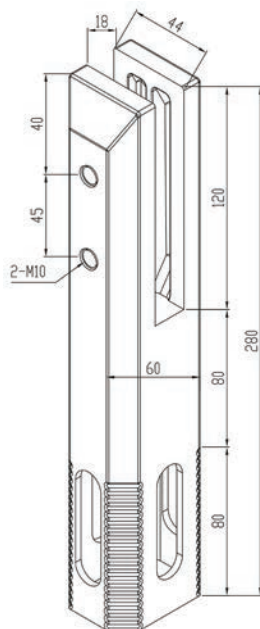
AVAILABLE FINISHES

- Polished Stainless
- Satin Stainless

TECHNICAL DETAILS

- The system is a unique strut post design which is unobtrusive, strong and durable
- The system features horizontal and vertical adjustment for the glass
- The vertical adjustment is attained by the use of a patented clamping and adjustment technique which is the heart of the fitting, it clamps the glass without the need for holes and this saves on glass processing costs and installation time
- The strut post is 168mm high and provides a 50mm clearance between the top of the deck and underside of the glass panel
- The NauTech system has been tested in NZ to AS/NZS 1170 barrier loadings in accordance with B1/VM1 Amendment
- Suits 12mm glass thickness (no holes or cutouts required)
- Domestic and commercial balustrades and pool fences
- Base fixing to masonry, timber and steel structures
- 16mm thick 316 grade stainless steel

FS-15SC Heavy Duty Core Drill Spigot



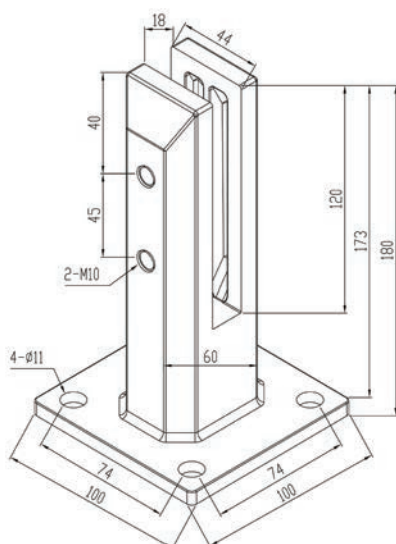
AVAILABLE FINISHES

- Mirror
- Satin

TECHNICAL DETAILS

- Suits 15mm glass

FS-15SD Heavy Duty Square Deck Mount Spigot



AVAILABLE FINISHES

- Mirror
- Satin

TECHNICAL DETAILS

- Suits 15mm glass

12mm Frameless Pool Glass Fencing

No holes with 2mm radius corners

CODE	WIDE (mm)	HEIGHT (mm)	AREA (sqm)
PG12-100	100	1170	0.12
PG12-150	150	1170	0.18
PG12-200	200	1170	0.23
PG12-250	250	1170	0.29
PG12-300	300	1170	0.35
PG12-350	350	1170	0.41
PG12-400	400	1170	0.47
PG12-450	450	1170	0.53
PG12-500	500	1170	0.59
PG12-550	550	1170	0.64
PG12-600	600	1170	0.70
PG12-650	650	1170	0.76
PG12-700	700	1170	0.82
PG12-750	750	1170	0.88
PG12-800	800	1170	0.94
PG12-850	850	1170	0.99
PG12-900	900	1170	1.05
PG12-950	950	1170	1.11
PG12-1000	1000	1170	1.17
PG12-1050	1050	1170	1.23
PG12-1100	1100	1170	1.29
PG12-1150	1150	1170	1.35
PG12-1200	1200	1170	1.4
PG12-1250	1250	1170	1.46
PG12-1300	1300	1170	1.52
PG12-1350	1350	1170	1.58
PG12-1400	1400	1170	1.64
PG12-1450	1450	1170	1.7
PG12-1500	1500	1170	1.76
PG12-1550	1550	1170	1.81
PG12-1600	1600	1170	1.87
PG12-1650	1650	1170	1.93
PG12-1700	1700	1170	1.99
PG12-1750	1750	1170	2.05
PG12-1800	1800	1170	2.11
PG12-1850	1850	1170	2.16
PG12-1900	1900	1170	2.22
PG12-1950	1950	1170	2.28
PG12-2000	2000	1170	2.34

12mm Hinge Panels for Polaris Spring Hinge

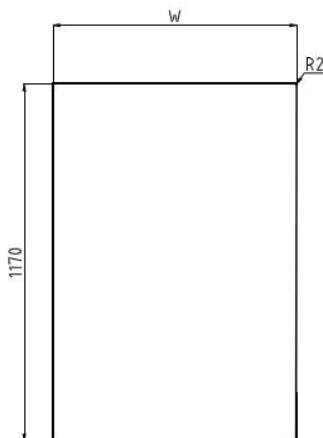
CODE	WIDE (mm)	HEIGHT (mm)	AREA (sqm)
PGH12-800	800	1170	0.93
PGH12-1000	1000	1170	1.17
PGH12-1100	1100	1170	1.32
PGH12-1200	1200	1170	1.41
PGH12-1300	1300	1170	1.56
PGH12-1400	1400	1170	1.64
PGH12-1500	1500	1170	1.80
PGH12-1600	1600	1170	1.87
PGH12-1700	1700	1170	2.04
PGH12-1800	1800	1170	2.16
PGH12-1900	1900	1170	2.28
PGH12-2000	2000	1170	2.40

12mm Polaris Hinge Gate Panel

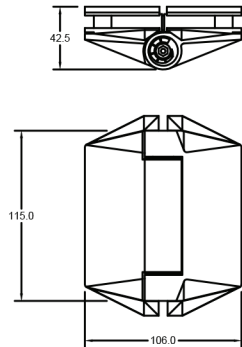
CODE	WIDE (mm)	HEIGHT (mm)	AREA (sqm)
PGHG12-800	800	1170	0.93
PGHG12-850	850	1170	1.05
PGHG12-900	900	1170	1.05

10mm Spring Hinge Gate Panel

CODE	WIDE (mm)	HEIGHT (mm)	AREA (sqm)
PGSG8-800	800	1170	0.93
PGHG8-850	850	1170	1.05
PGHG8-900	900	1170	1.05



Polaris Hinge Glass to Glass and Polaris Latch

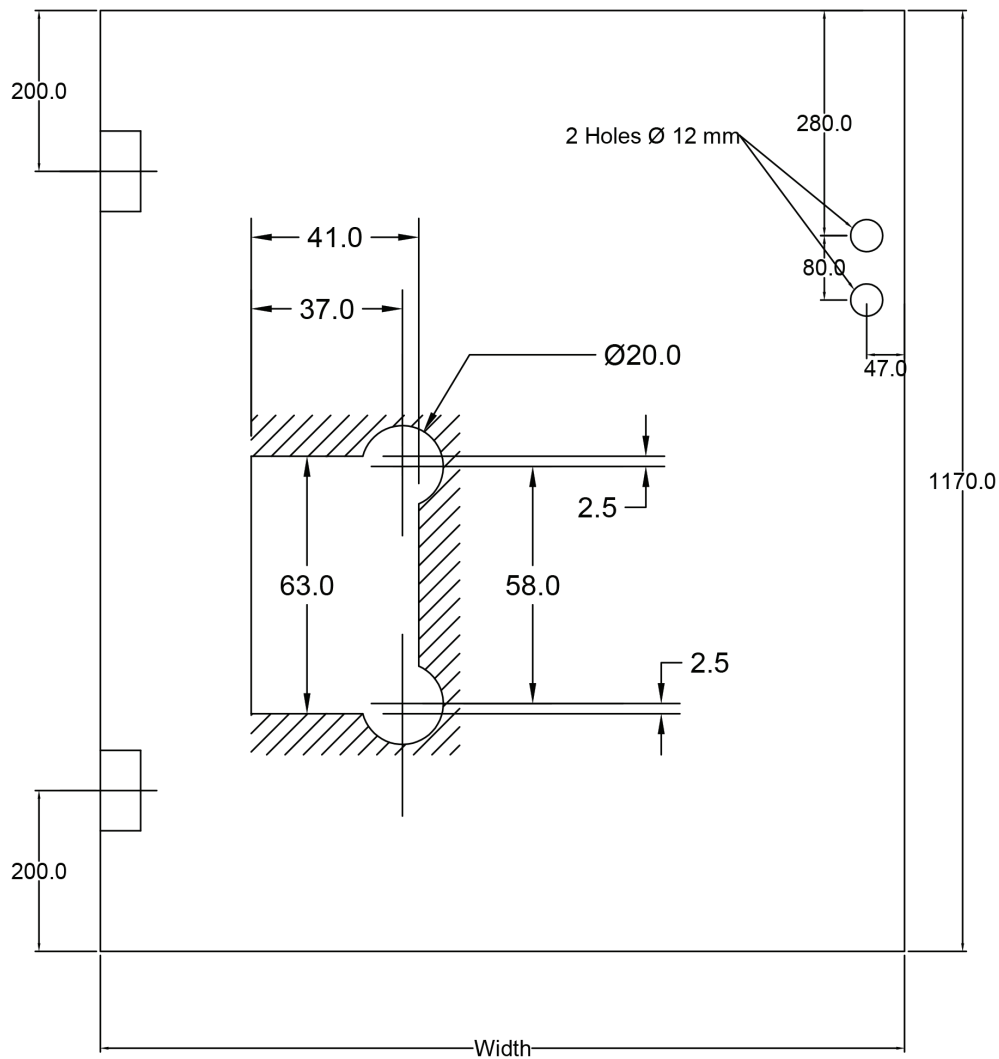


AVAILABLE FINISHES

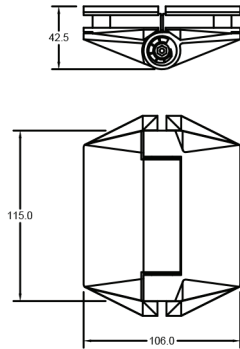
- Polish
- Satin
- Black

TECHNICAL DETAILS

- 12mm clear toughened glass
- 4 x 2mm polish radius corner
- Glass to glass



Polaris Glass to Glass Cut Out Standard Latch

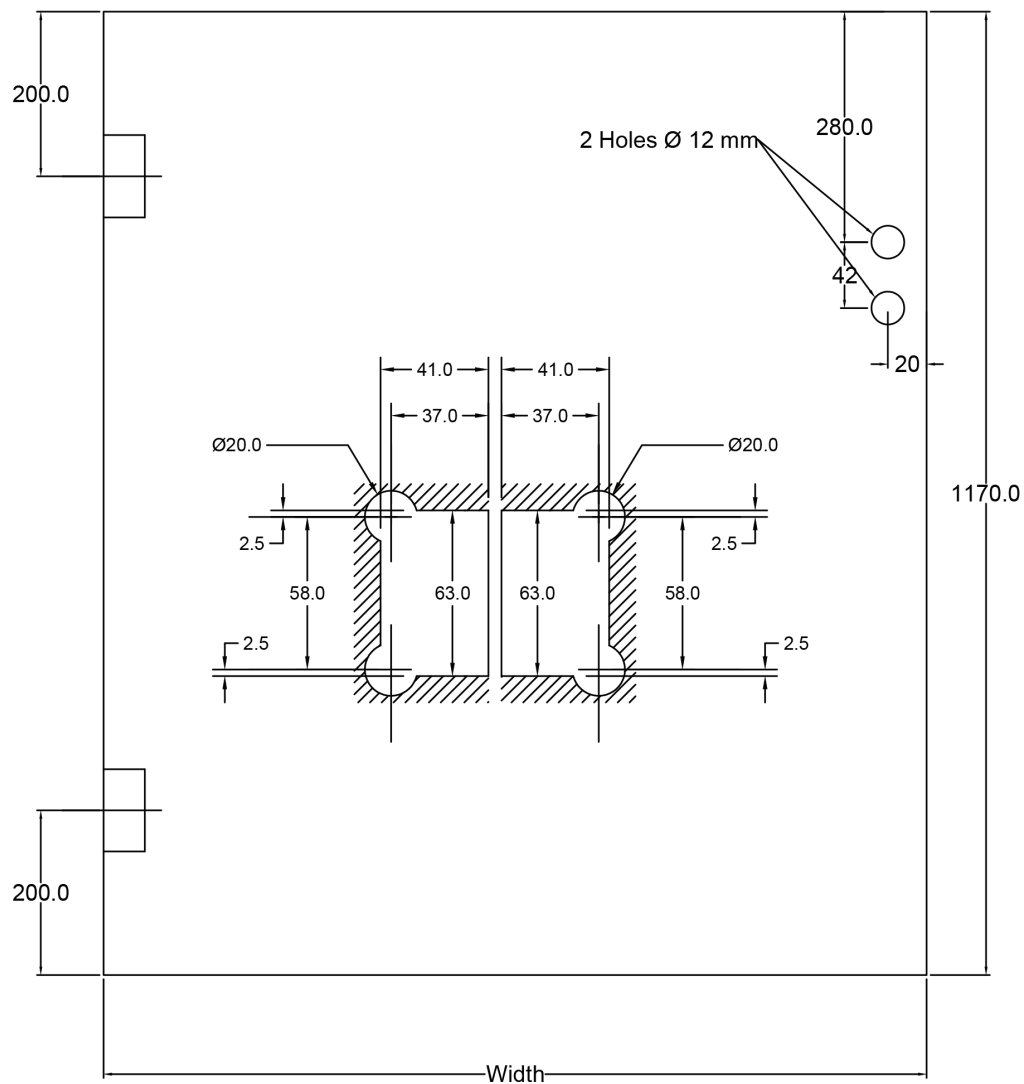


AVAILABLE FINISHES

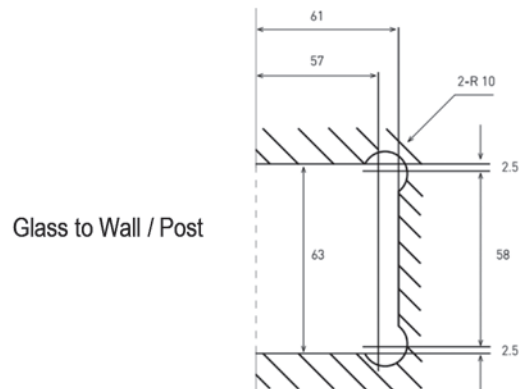
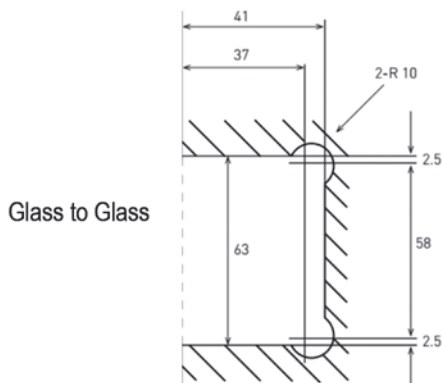
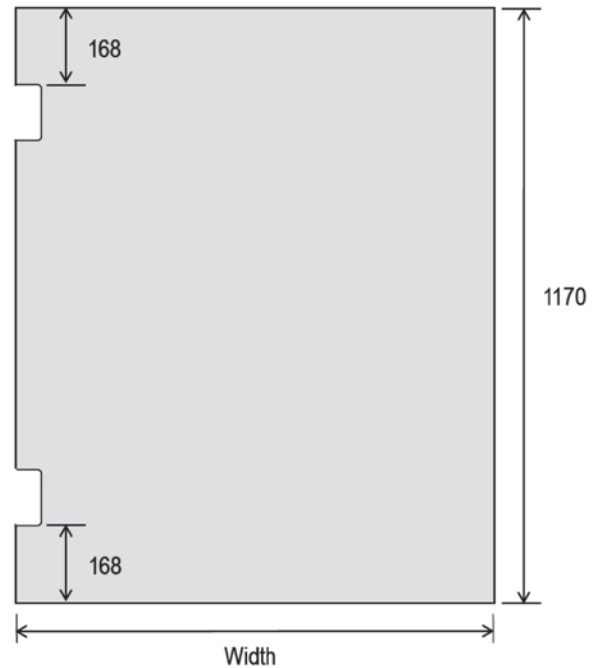
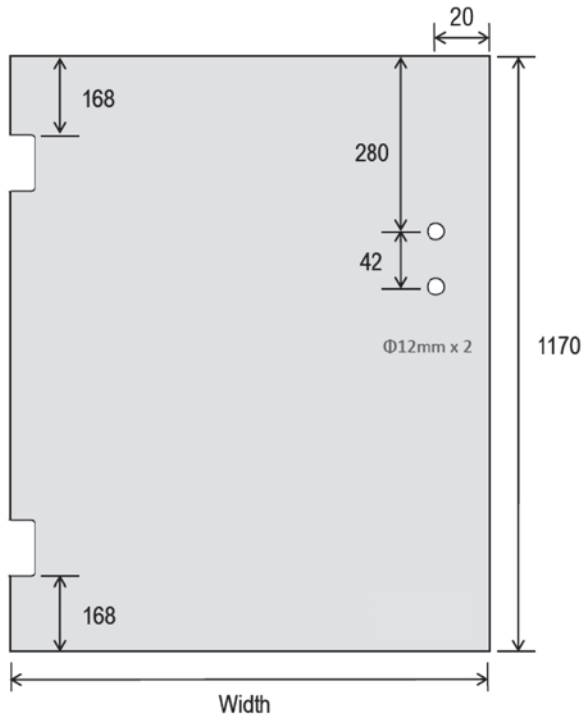
- Polish
- Satin
- Black

TECHNICAL DETAILS

- 12mm clear toughened glass
- 4 x 2mm polish radius corner
- Glass to glass

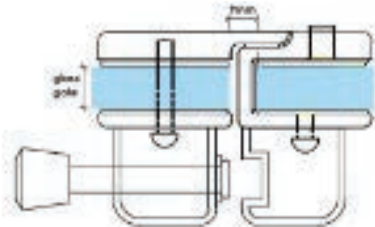


12mm Clear Toughened Polaris Pool Gate, Hinge Panel and Standard Latch



7

GLGGM/GLGGS Glass to Glass Latch



AVAILABLE FINISHES

- Mirror
- Satin
- Black

TECHNICAL DETAILS

- Suits 10mm and 12mm glass
- 316 Stainless Steel

PL-GGM/PL-GGS Polaris Latch



AVAILABLE FINISHES

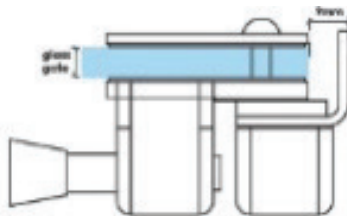
- Mirror
- Satin
- Black

TECHNICAL DETAILS

- Suits 10mm and 12mm glass
- 316 Stainless Steel

* Note hole positions for Polaris Latch

GLGPM/GLGPS Glass to Square Post Latch



AVAILABLE FINISHES

- Mirror
- Satin
- Black

TECHNICAL DETAILS

- Suits 10mm and 12mm glass
- 316 Stainless Steel

PL-GWM/PL-GWS Polaris Latch



AVAILABLE FINISHES

- Mirror
- Satin
- Black

TECHNICAL DETAILS

- Suits 10mm and 12mm glass
- 316 Stainless Steel

* Note hole positions for Polaris Latch

GLRDM/GLRDS Glass to Round Post Latch



AVAILABLE FINISHES

- Mirror
- Satin

TECHNICAL DETAILS

- Suits 10mm and 12mm glass
- 316 Stainless Steel

PGL-L D&D Key Lock



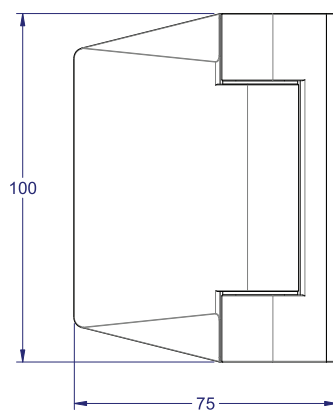
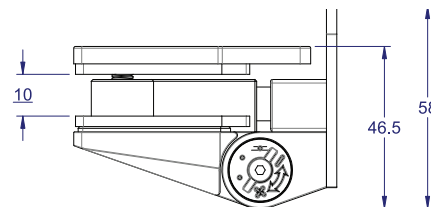
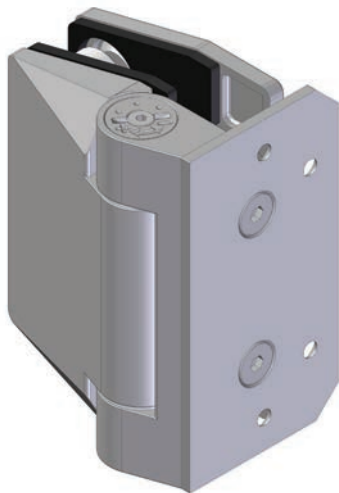
AVAILABLE FINISHES

- Mirror
- Satin

TECHNICAL DETAILS

- Retro fit all latches

Polaris Glass to Wall



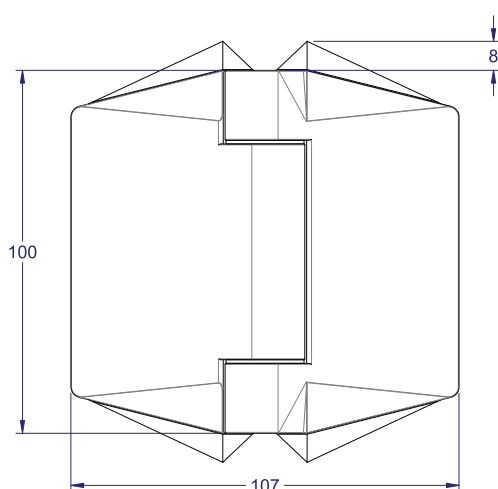
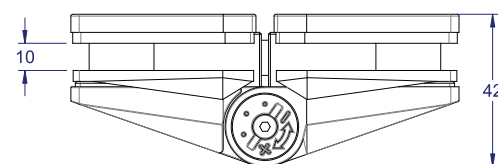
AVAILABLE FINISHES

- Mirror
- Satin
- Black

TECHNICAL DETAILS

- Magnets and Hydraulic Dampner
- Suits 10mm and 12mm glass

Polaris Glass to Glass



AVAILABLE FINISHES

- Mirror
- Satin
- Black

TECHNICAL DETAILS

- Magnets and Hydraulic Dampner
- Suits 10mm and 12mm glass

GLOM/GLOS Glass to Glass External Applications



AVAILABLE FINISHES

- Mirror
- Satin

TECHNICAL DETAILS

- Poolgate latch and keeper
- Suitable for 10mm and 12mm glass
- Suits holes in standard door

PL-GLOM/PL-GLOS Polaris Latch



AVAILABLE FINISHES

- Mirror
- Satin

TECHNICAL DETAILS

- Poolgate latch and keeper
- Suitable for 10mm and 12mm glass
- Suits holes in standard door

* Note hole positions for Polaris Latch

GLIM/GLIS Glass to Glass Internal Applications



AVAILABLE FINISHES

- Mirror
- Satin

TECHNICAL DETAILS

- Poolgate latch and keeper
- Suitable for 10mm and 12mm glass
- Suits holes in standard door

PL-GLIM/PL-GLIS Polaris Latch



AVAILABLE FINISHES

- Mirror
- Satin

TECHNICAL DETAILS

- Poolgate latch and keeper
- Suitable for 10mm and 12mm glass
- Suits holes in standard door

* Note hole positions for Polaris Latch

PGH-180A Glass to Glass Spring Hinge - Heavy Duty



AVAILABLE FINISHES

- Mirror
- Satin

TECHNICAL DETAILS

- Suitable for 10mm and 12mm glass

PGH-SA Glass to Square Post Spring Hinge - Heavy Duty



AVAILABLE FINISHES

- Mirror
- Satin

TECHNICAL DETAILS

- Suitable for 10mm and 12mm glass

PGH-RA Glass to Round Post Spring Hinge - Heavy Duty



AVAILABLE FINISHES

- Mirror
- Satin

TECHNICAL DETAILS

- Suitable for 10mm and 12mm glass

SLH Heavy Duty Spring Hinge



AVAILABLE FINISHES

- Mirror
- Satin

TECHNICAL DETAILS

- Suits 10mm and 12mm glass

SHGGM Spring Hinges



AVAILABLE FINISHES

- Mirror
- Satin

TECHNICAL DETAILS

- Suitable for 10mm glass
- 316 Stainless Steel

SHGRDM/SHGSQM Spring Hinges



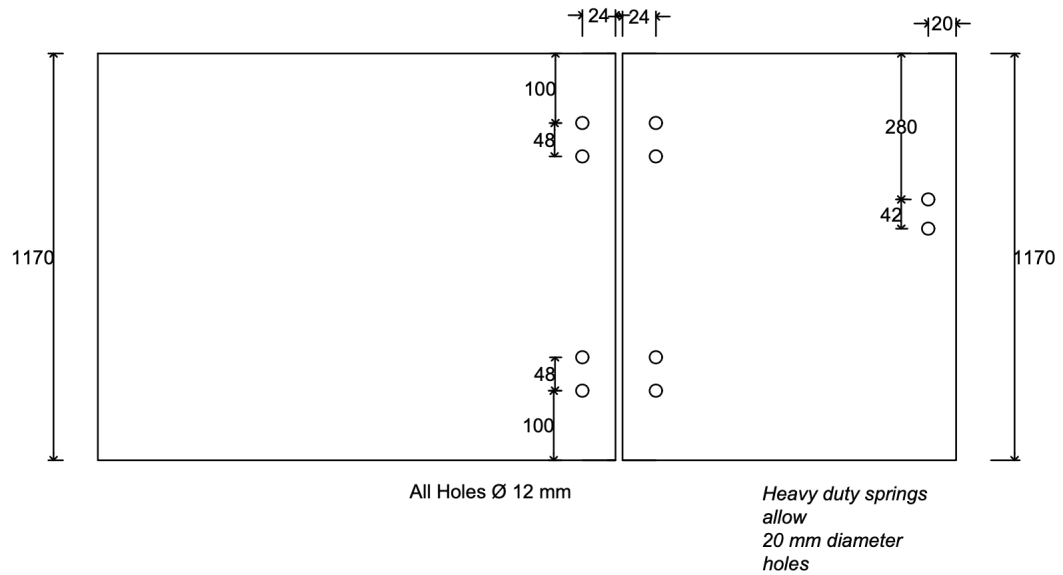
AVAILABLE FINISHES

- Mirror
- Satin

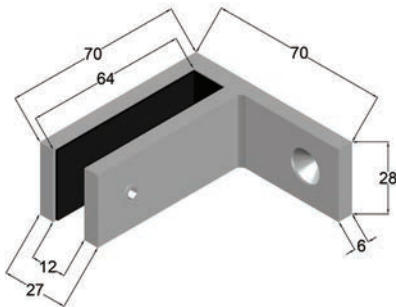
TECHNICAL DETAILS

- Suitable for 10mm glass
- 316 Grade Stainless Steel

Spring Hinge Panel and Gate Cut Out Details



LP Wall Fixing Glass Clamp



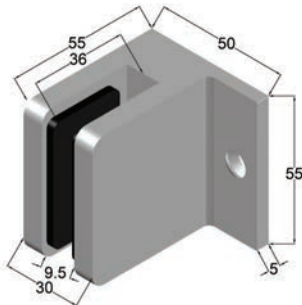
AVAILABLE FINISHES

- Mirror
- Satin

TECHNICAL DETAILS

- Suitable for 12mm glass

LPW Wall Fixing Glass Clamp



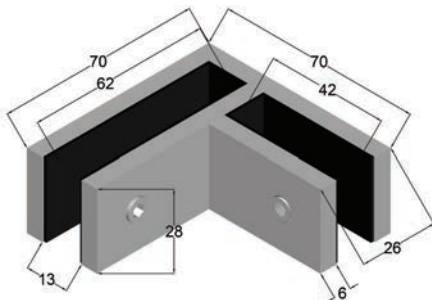
AVAILABLE FINISHES

- Mirror
- Satin

TECHNICAL DETAILS

- Suitable for 12mm glass

LP-90M/S 90° Glass to Glass Clamp



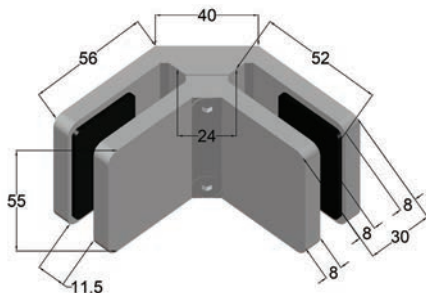
AVAILABLE FINISHES

- Mirror
- Satin

TECHNICAL DETAILS

- Suitable for 12mm glass

LP-90MW/S 90° Glass to Glass Clamp



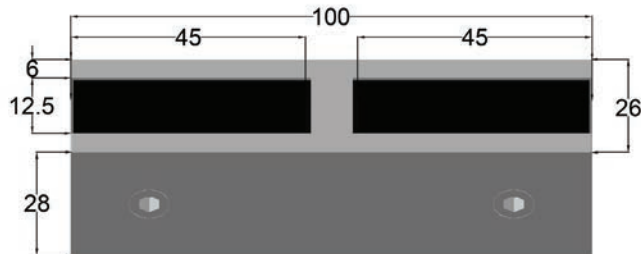
AVAILABLE FINISHES

- Mirror
- Satin

TECHNICAL DETAILS

- Suitable for 12mm glass

LP-180M/S 180° Glass to Glass Clamp



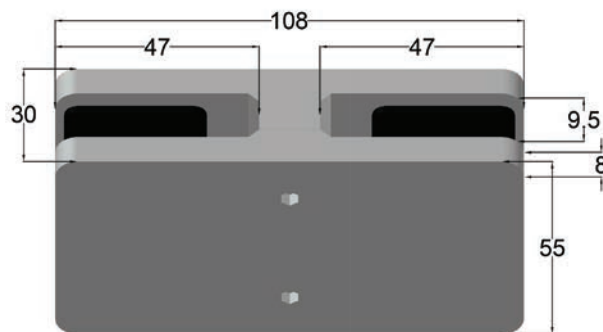
AVAILABLE FINISHES

- Mirror
- Satin

TECHNICAL DETAILS

- Suitable for 12mm glass

LP-180WM/S 180° Glass to Glass Clamp



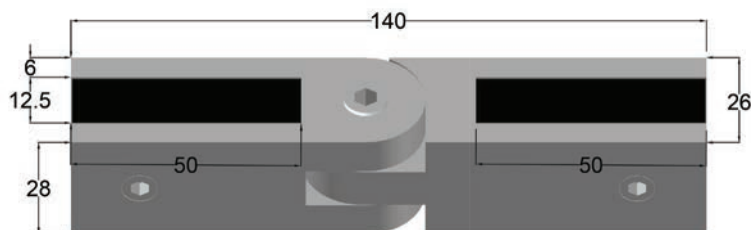
AVAILABLE FINISHES

- Mirror
- Satin

TECHNICAL DETAILS

- Suitable for 12mm glass

LP-ADJ Adjustable Glass to Glass Clamp

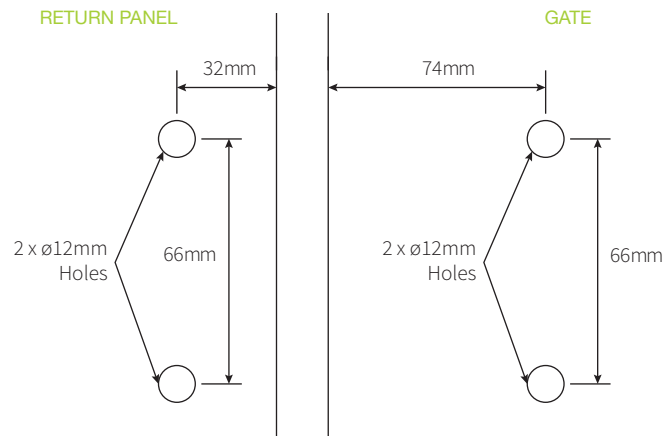
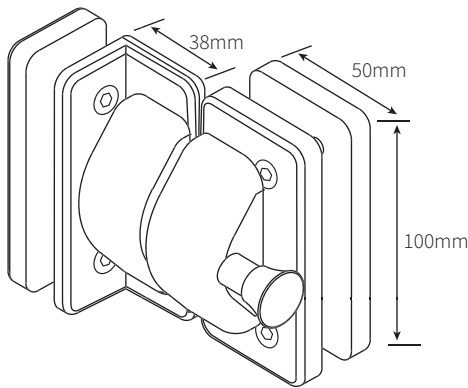


AVAILABLE FINISHES

- Mirror
- Satin

TECHNICAL DETAILS

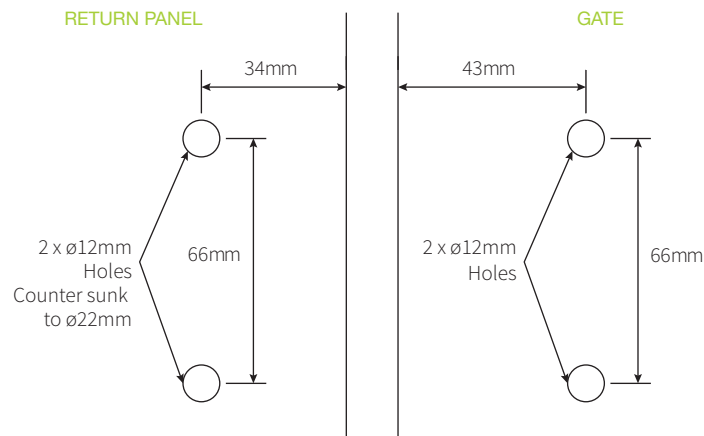
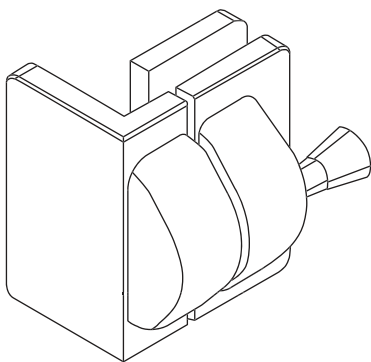
- Suitable for 12mm glass

PL290 Pool Gate Latch and Keeper – Glass to Glass 90°**AVAILABLE FINISHES**

- Polished Stainless Steel
- Satin Stainless Steel

TECHNICAL DETAILS

- Designed for a frameless glass pool gate that closes to a post or wall
- Self latching using "Magna" latch
- Minimum door height 1.2 metres
- Suitable for 10mm and 12mm glass thickness, can be adapted for other sizes
- 316 stainless steel

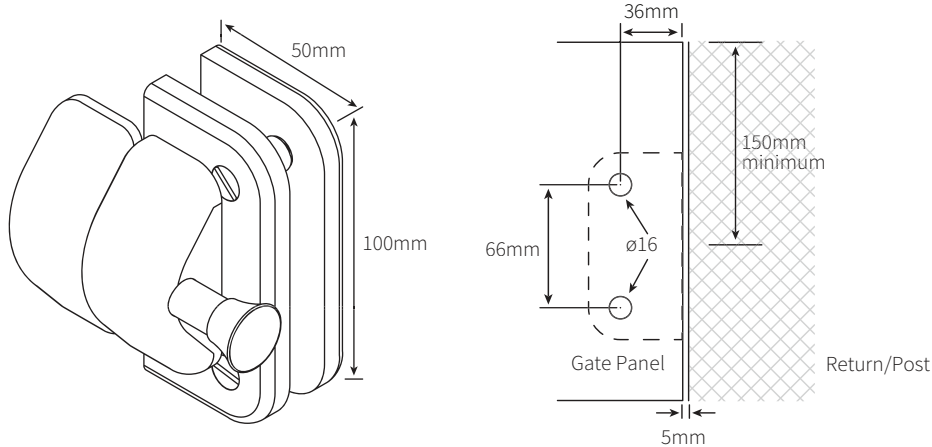
PL290.R Pool Gate Latch and Keeper – Glass to Glass 90°**AVAILABLE FINISHES**

- Polished Stainless Steel
- Satin Stainless Steel

TECHNICAL DETAILS

- Designed for a frameless glass pool gate that closes to a post or wall
- Self latching using "Magna" latch
- Minimum door height 1.2 metres
- Suitable for 10mm and 12mm glass thickness, can be adapted for other sizes
- 316 stainless steel

PL1 Pool Gate Latch and Strike – Glass to Post



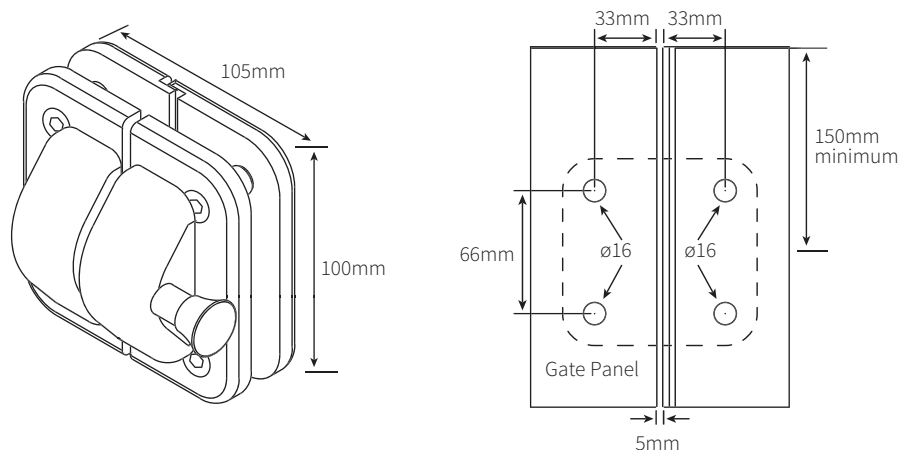
AVAILABLE FINISHES

- Polished Stainless Steel
- Satin Stainless Steel

TECHNICAL DETAILS

- Designed for a frameless glass pool gate that closes to a post or wall
- Self latching using “Magna” latch
- Minimum door height 1.2 metres
- Suitable for 10mm and 12mm glass thickness, can be adapted for other sizes
- 316 stainless steel

PL2 Pool Gate Latch and Keeper Glass to Glass



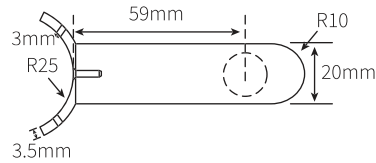
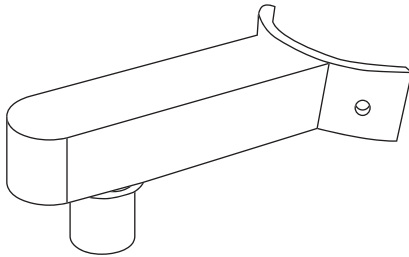
AVAILABLE FINISHES

- Polished Stainless Steel
- Satin Stainless Steel

TECHNICAL DETAILS

- Designed for a frameless glass pool gate and side panel
- Self latching using “Magna” latch
- Minimum door height 1.2 metres
- Suitable for 10mm and 12mm glass thickness, can be adapted for other sizes
- 316 stainless steel

FPF5.P Pivot Top Arm – Glass to Round Post

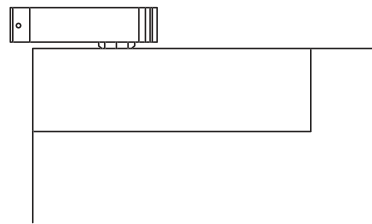


AVAILABLE FINISHES

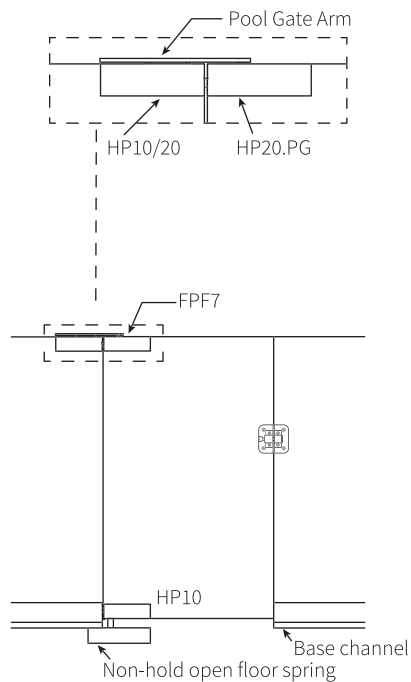
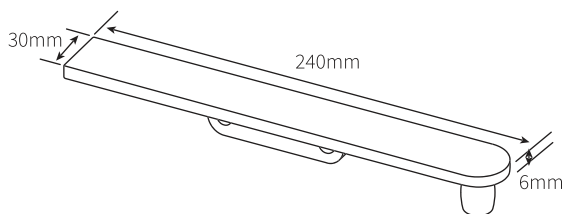
- Polished Stainless Steel
- Satin Stainless Steel

TECHNICAL DETAILS

- Use in conjunction with SBC42400 top patch to allow the gate to pivot from 50mm diameter post
- Suitable for 50mm diameter posts
- 316 grade stainless steel



FPF7 Pivot Top – Bracket



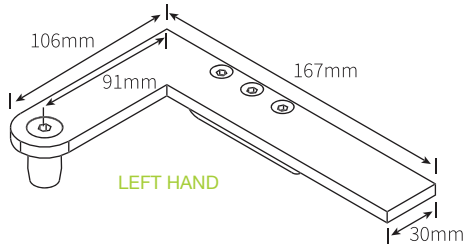
AVAILABLE FINISHES

- Polished Stainless Steel
- Satin Stainless Steel

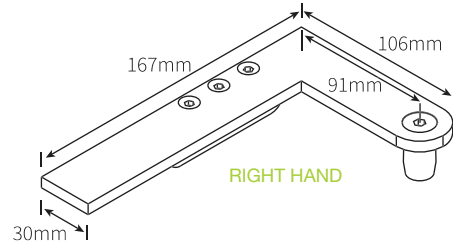
TECHNICAL DETAILS

- Use in conjunction with HP20/HP10 top patch fittings that allow them to work as a top pivot set
- Suitable for mounting a glass gate to a glass balustrade
- 316 grade stainless steel

FPF790.L (LEFT) / FPF790.R (RIGHT) Pivot Arm – Top 90°

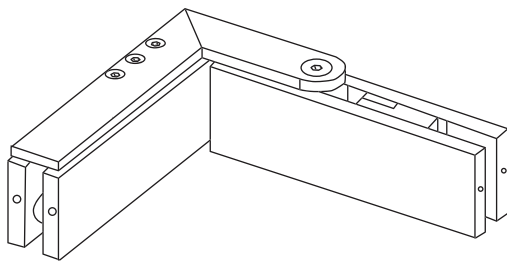


LEFT HAND

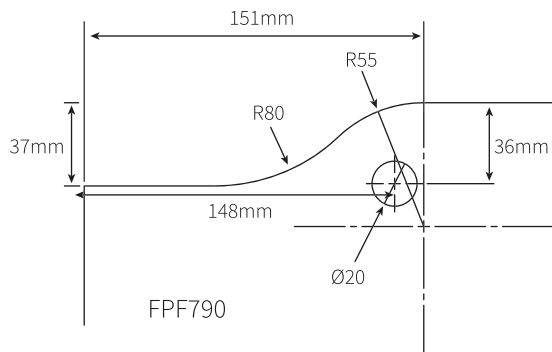


RIGHT HAND

ASSEMBLY (RIGHT HAND SIDE)

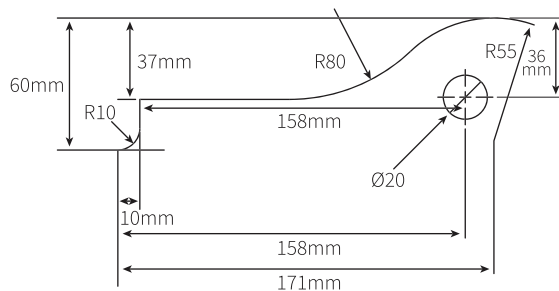


GLASS DETAIL – RETURN PANEL



FPF790

GLASS DETAIL – DOOR



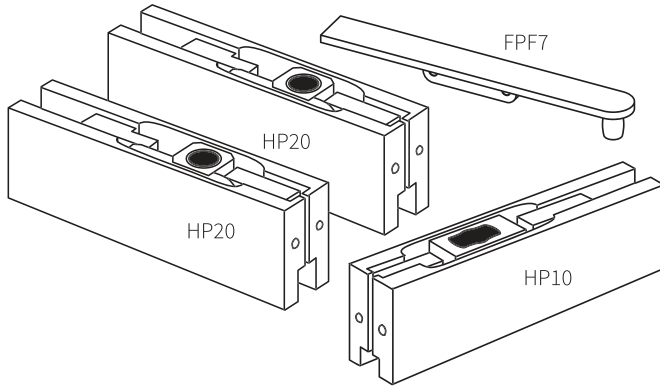
AVAILABLE FINISHES

- Polished Stainless Steel
- Satin Stainless Steel

TECHNICAL DETAILS

- Use in conjunction with HP20/HP10 top patch fittings that allow them to work as a top pivot set
- Suitable for mounting a glass gate to a glass balustrade
- 316 grade stainless steel

FPF7.KIT Pivot Top – Set Kit



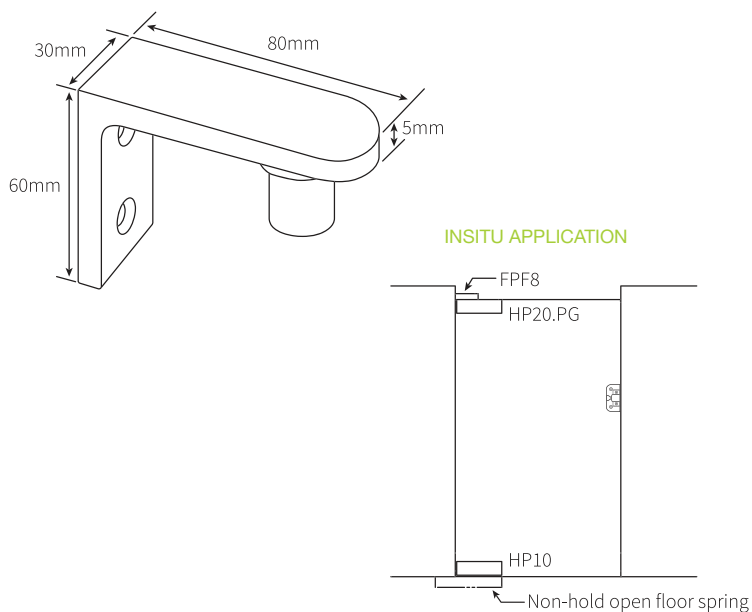
AVAILABLE FINISHES

- Polished Stainless Steel
- Satin Stainless Steel

TECHNICAL DETAILS

- Kit includes:
 - Two HP20
 - One HP10
 - One FPFT
- 316 grade stainless steel

FPF8 Pivot Arm Top – Glass to Solid Wall



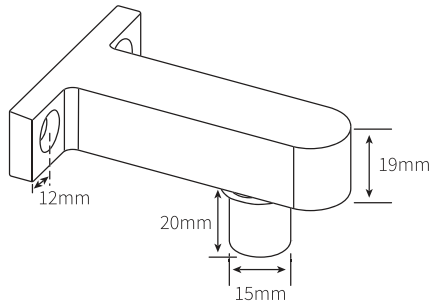
AVAILABLE FINISHES

- Polished Stainless Steel
- Satin Stainless Steel

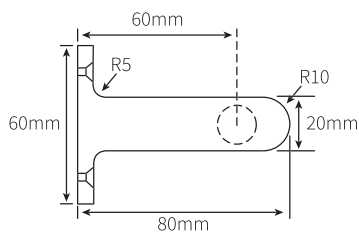
TECHNICAL DETAILS

- Kit includes:
 - Two HP20
 - One HP10
 - One FPFT
- 316 grade stainless steel

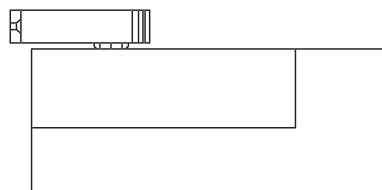
FPF5 Pivot Arm – Glass to Wall



GLASS CUT OUT DETAIL



INSITU APPLICATION



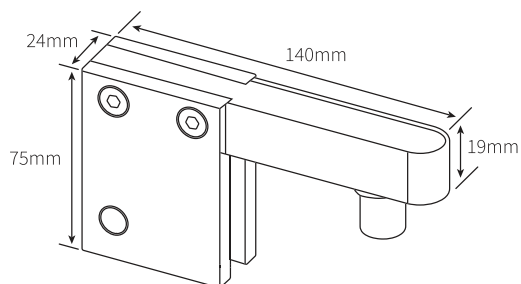
AVAILABLE FINISHES

- Polished Stainless Steel
- Satin Stainless Steel

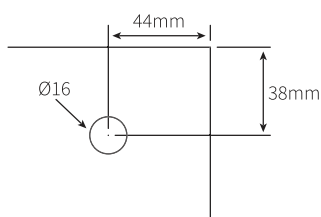
TECHNICAL DETAILS

- Kit includes:
 - Two HP20
 - One HP10
 - One FPFT
- 316 grade stainless steel

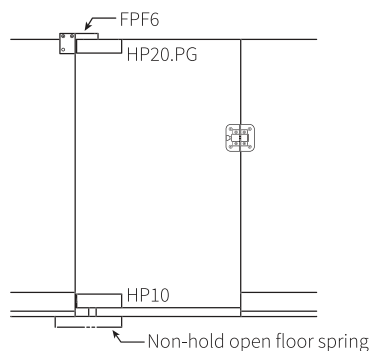
FPF6 Pivot Arm Top – Glass to Glass



GLASS CUT OUT DETAIL



INSITU APPLICATION



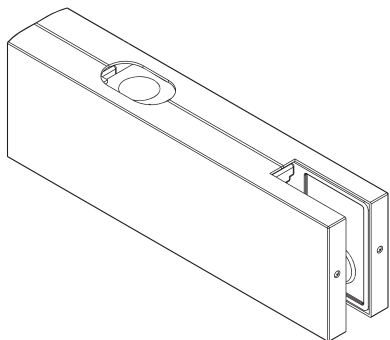
AVAILABLE FINISHES

- Polished Stainless Steel
- Satin Stainless Steel

TECHNICAL DETAILS

- Use in conjunction with elite glass standard patch fittings and floor springs
- Suitable for mounting a glass gate to a glass balustrade
- 316 grade stainless steel

HP20.PG Top Patch Fitting – Suitable for Pool Gate Pivots



AVAILABLE FINISHES

- Polished Stainless Steel
- Satin Stainless Steel

TECHNICAL DETAILS

- Adjustable pivot insert
- Features concealing cover plates
- Suitable for Eliteglass pool gate fittings - FPF5/FPF6/FPF7 and FPF8

TEA STAINING

WHAT IS TEA STAINING?

Tea staining can be described as: discoloration of the surface of stainless steel that does not affect the structural integrity or the longevity of the material. Visually it is a discoloration of the metal surface, which tends to follow the 'grain' of any surface finish. Although unpleasant to look at, it is not a serious form of corrosion. Aesthetically it is unacceptable so the following information is designed to help you understand its causes and institute a plan to keep your hardware looking better for longer.

WHERE AND WHY DOES TEA STAINING OCCUR?

Tea staining of stainless steels occurs most commonly in coastal areas and becomes progressively worse the closer you get to water. Other factors such as pollution, higher temperatures and humidity can also increase the effect. Tea staining occurs when particles gather in surface troughs of the metal and oxidise or corrode. For this reason, rougher surfaces promote tea staining. Smoother surface finishes are cleaner between washes and don't have surface grooves where chlorides (salt) and other contaminants can collect, concentrate and cause problems.

HOW TO MINIMISE TEA STAINING?

Specify and insist on the right grade - Grade 316 should be selected as a minimum within 5km of the coast, especially outside.

Surface finish - The rule of thumb for surface finish is the smoother the finish, the better the resistance to tea staining.

Perform regular maintenance - Wash regularly with clean fresh water, mild detergent and a cloth or soft brush. After washing rinse in clean water and wipe the surface dry with a soft absorbant cloth remembering to go with the grain on brushed stainless steel. Generally, you should wash your stainless steel every time you wash your windows or every three months. Do not use abrasive cleaners or a scouring pad of any type as they may cause excessive wear and dull the finish. Even smooth stainless steel finishes in coastal environments may show tea staining if not washed regularly.

TEA STAINING CONT.

With a little bit of care, you can radically minimise, if not prevent tea staining and get years of visual enjoyment from your stainless steel. It must be recognised that keeping a pristine finish requires understanding, additional effort and usually extra cost in the first instance. It is all about determining your expectations of the hardware and planning to achieve and maintain the visual appeal.

TEA STAINING REMOVAL

Brown discoloration or tea staining of stainless steel in coastal environments is a common problem, but luckily it is one that can be prevented. If you have tea staining there are a few steps to take to bring your stainless-steel back to “as new” condition.

Get a specialist cleaning product such as the 3M Stainless Steel cleaner and a non-scratch cleaning sponge, both readily available from your supermarket.

Apply clean water with the cleaning sponge and rub gently. If the mark won't shift, it may be necessary to use a stainless-steel cleaner, in which case apply the cleaner and rub gently. An old toothbrush can be used to get into any nooks and crannies. After cleaning it is important to rinse the stainless steel with clean fresh water and buff with a soft cloth. Remember to always rub with the grain, NEVER across as you will spoil the finish and the stainless can lose its shine. Also, NEVER use steel wool to clean stainless steel. It is usually made of carbon steel and the fragments left behind as well as scratching the surface will rust onto the stainless-steel surface. If you must use a scourer, use stainless steel wool or a Scotch rite plastic scourer. This will scratch the surface, but will not leave fragments behind to go rusty. On polished stainless steel surfaces this will damage the surface and is not recommended.