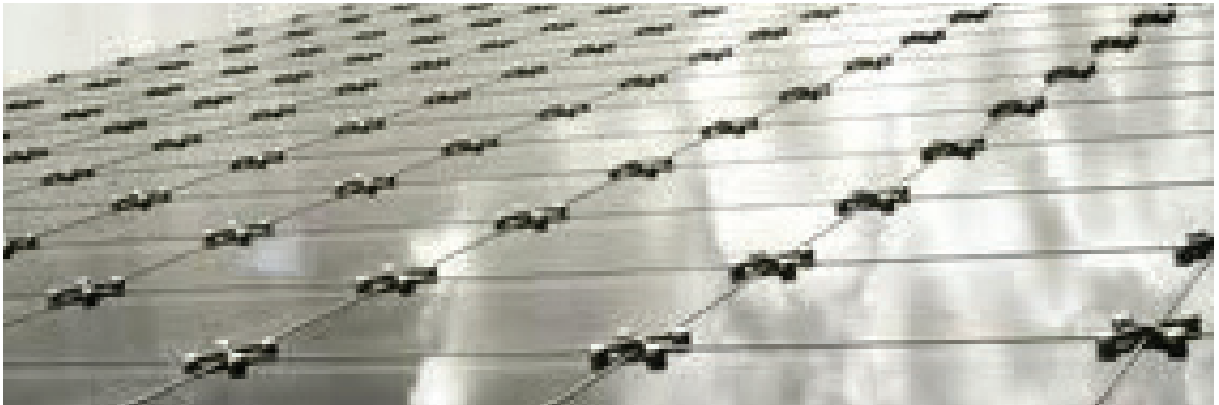


## SpiderFtg – Frameless Glass Fittings



The Austvision SpiderFit provides a full range of cast 316 marine grade stainless steel spider fittings used in frameless glass point supported glass systems

SpiderFtg provides a flexible connection between the structural glass and the supporting system and the Spider Fittings can be assembled with a range of glass connectors.

### SPIDERFTG RANGE

Heavy Duty: 445 series – 4 way or 2 way  
446 series – 4 way or 2 way  
448 series – 2 way

Light Duty: 443 series – 4 way or 2 way  
444 series – 4 way or 2 way

### GLASS CONNECTIONS

Fixed: M8 CSK  
M8 CSK Disc  
M10 CSK  
M10 CSK Disc

Swivel: 60/22-22n to suit up to 22mm total glass thickness  
60/22-42n to suit up to 42mm total glass thickness

### MATERIAL AND FINISH

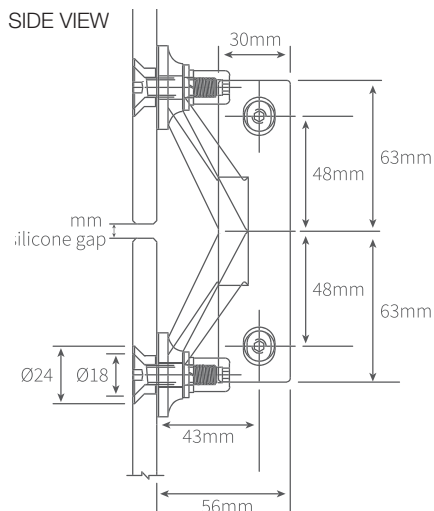
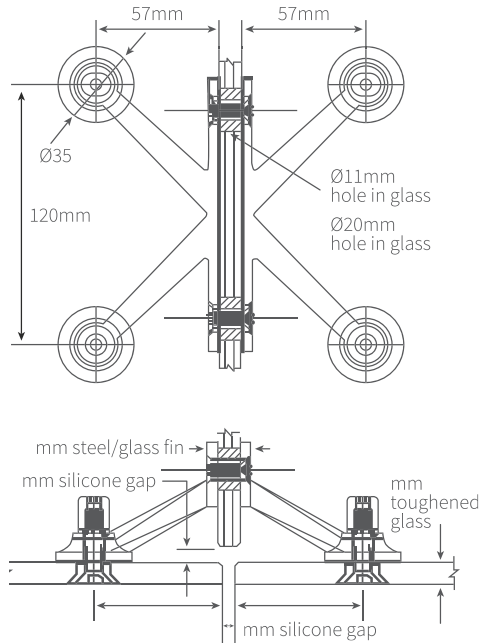
All fittings are 316 marine grade stainless steel and available in satin and polished finish.

### INSTALLATION

The SpiderFtg range can be used with Toughened Safety Glass or Toughened Laminated Safety Glass

### BENEFITS

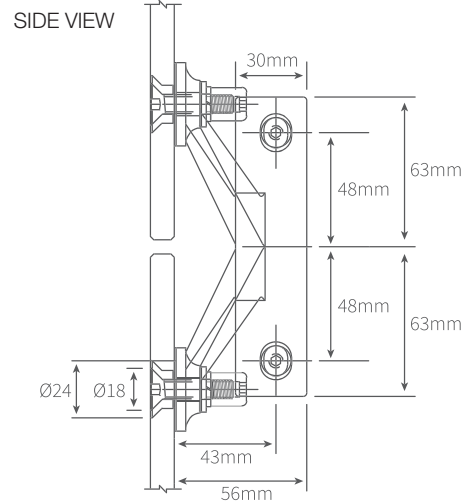
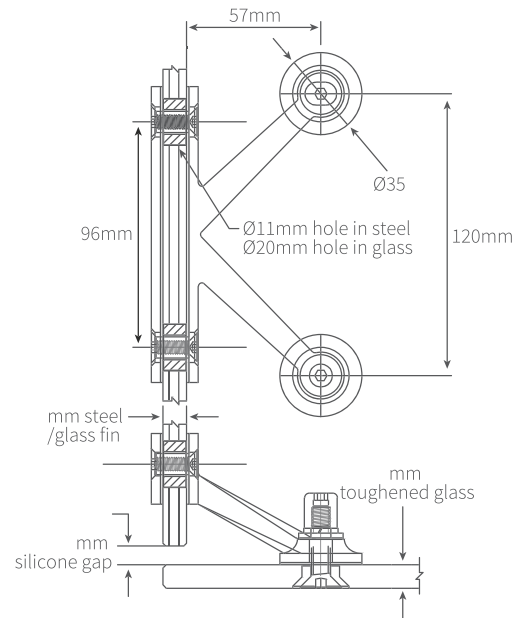
- Tested by independent testing facility under static and dynamic loadings
- Suitable for 8mm to 25mm TSG
- Suitable for 10mm to 20mm TLSG
- Can be used with point fixed IGUs, up to maximum 42mm thick

**444.4 Spider Fitting LIGHT WEIGHT**

**AVAILABLE FINISHES**

- Satin stainless steel
- Polished stainless steel

**TECHNICAL DETAILS**

- 4 way glass connector for balustrade - light duty
- M10 Csk, M10 Csk Disc, 60/22-22n, 60/22-42n IGU
- Specify glass thickness and fixing type when ordering

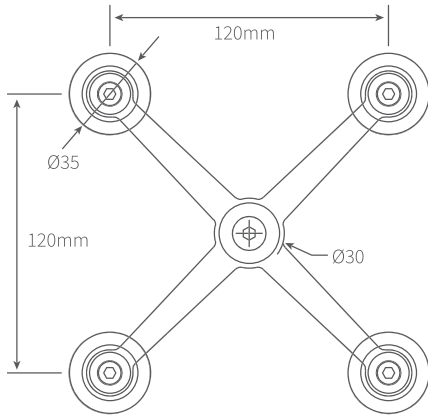
**444.4.2 Spider Fitting LIGHT WEIGHT**

**AVAILABLE FINISHES**

- Satin stainless steel
- Polished stainless steel

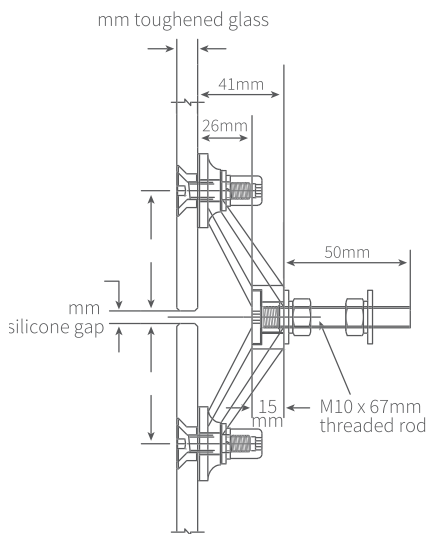
**TECHNICAL DETAILS**

- 4 way 1 side glass connector for balustrade - light duty
- M10 Csk, M10 Csk Disc, 60/22-22n, 60/22-42n IGU
- Specify glass thickness and fixing type when ordering



**443.4 Spider Fitting** LIGHT WEIGHT


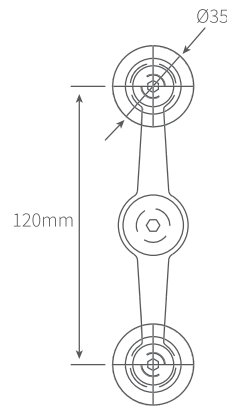
SIDE VIEW


**AVAILABLE FINISHES**

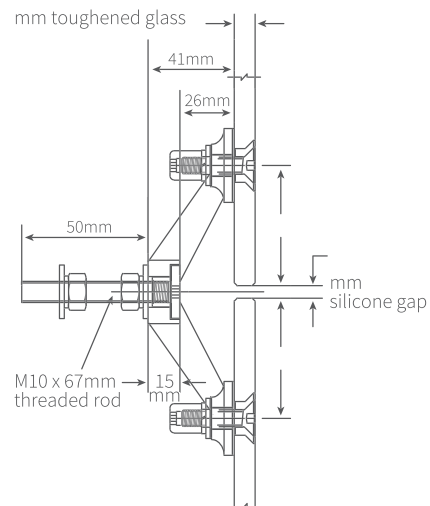
- Satin stainless steel
- Polished stainless steel

**TECHNICAL DETAILS**

- 4 way glass connector for small elevations and balustrades - light duty
- M10 Csk, M10 Csk Disc, 60/22-22n, 60/22-42n IGU
- Specify glass thickness and fixing type when ordering

**443.2 Spider Fitting** LIGHT WEIGHT


SIDE VIEW

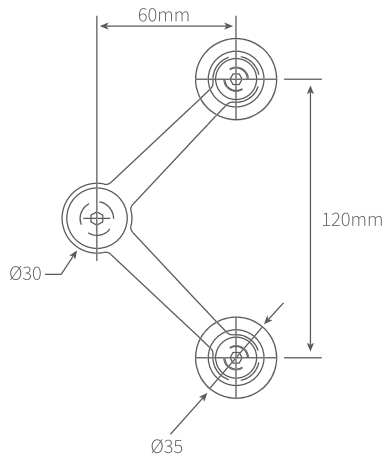

**AVAILABLE FINISHES**

- Satin stainless steel
- Polished stainless steel

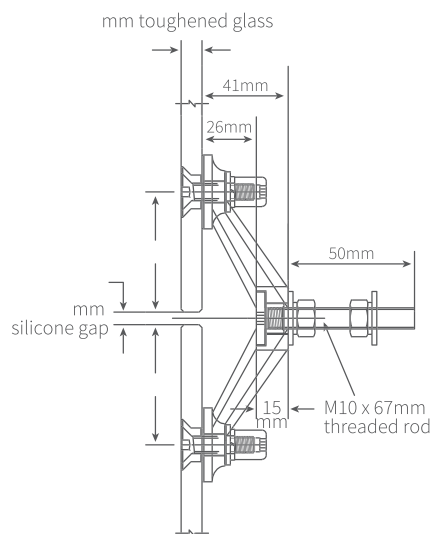
**TECHNICAL DETAILS**

- 2 way glass connector for small elevations and balustrades - light duty
- M10 Csk, M10 Csk Disc, 60/22-22n, 60/22-42n IGU
- Specify glass thickness and fixing type when ordering

### 443.4.2 Spider Fitting LIGHT WEIGHT



SIDE VIEW



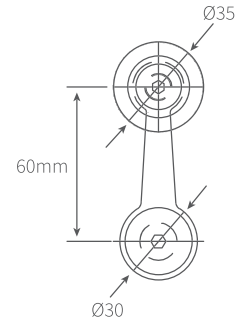
#### AVAILABLE FINISHES

- Satin stainless steel
- Polished stainless steel

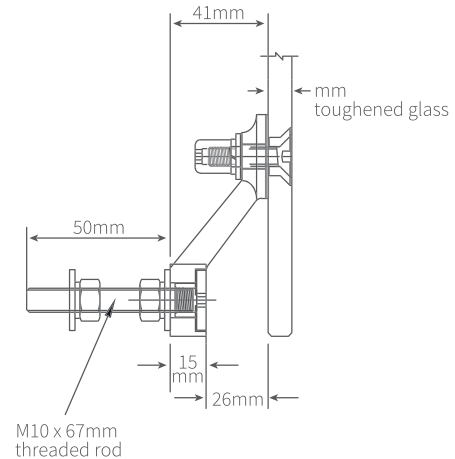
#### TECHNICAL DETAILS

- 1 way glass connector for small elevations and balustrades - light duty
- M10 Csk, M10 Csk Disc, 60/22-22n, 60/22-42n IGU
- Specify glass thickness and fixing type when ordering

### 443.2.1 Spider Fitting LIGHT WEIGHT



SIDE VIEW

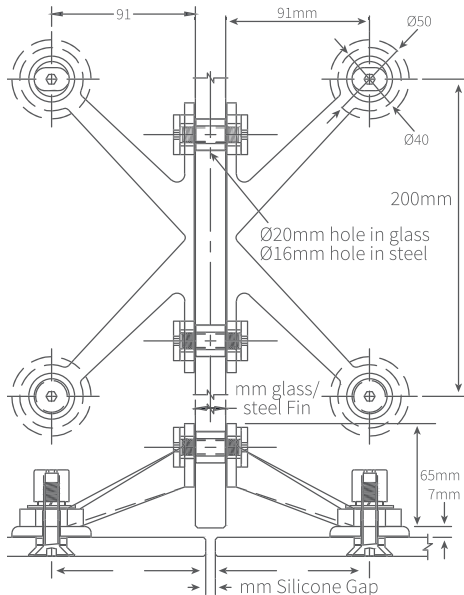


#### AVAILABLE FINISHES

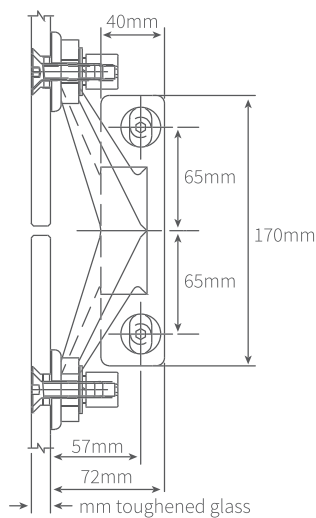
- Satin stainless steel
- Polished stainless steel

#### TECHNICAL DETAILS

- 1 way glass connector for small elevations and balustrades - light duty
- M10 Csk, M10 Csk Disc, 60/22-22n, 60/22-42n IGU
- Specify glass thickness and fixing type when ordering

**445.4M Spider Fitting HEAVY WEIGHT**


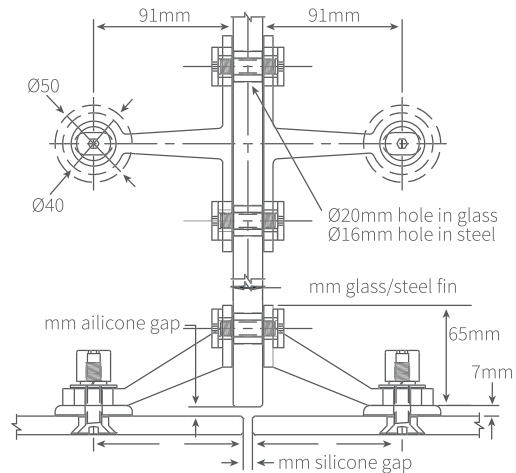
SIDE VIEW


**AVAILABLE FINISHES**

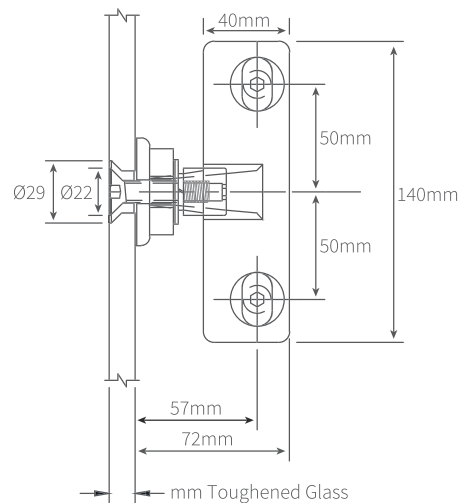
- Satin stainless steel
- Polished stainless steel

**TECHNICAL DETAILS**

- 4 way glass connector - heavy duty
- M10 Csk, M10 Csk Disc, 60/22-22n, 60/22-42n IGU
- Specify glass thickness and fixing type when ordering

**445.2M Spider Fitting HEAVY WEIGHT**


SIDE VIEW

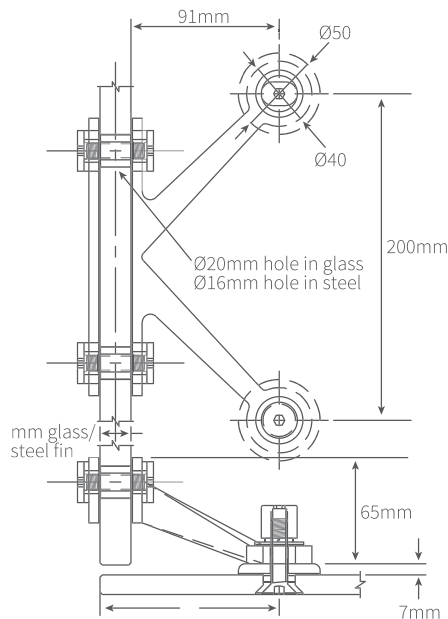

**AVAILABLE FINISHES**

- Satin stainless steel
- Polished stainless steel

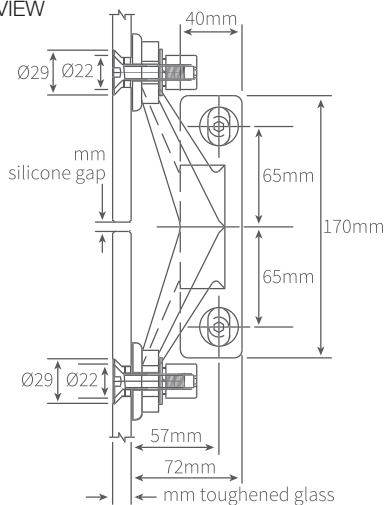
**TECHNICAL DETAILS**

- 2 way glass connector - heavy duty
- M10 Csk, M10 Csk Disc, 60/22-22n, 60/22-42n IGU
- Specify glass thickness and fixing type when ordering

## 445.4M.2 Spider Fitting HEAVY WEIGHT



SIDE VIEW



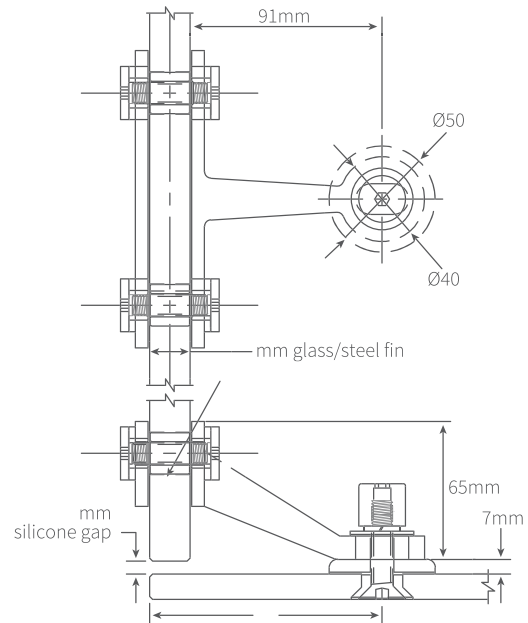
### AVAILABLE FINISHES

- Satin stainless steel
- Polished stainless steel

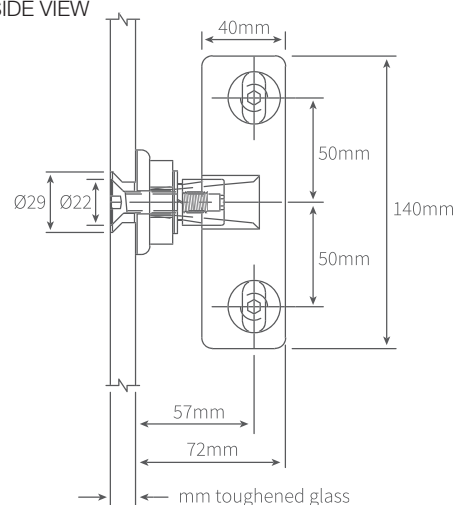
### TECHNICAL DETAILS

- 2 way 1 side glass connector - heavy duty
- M10 Csk, M10 Csk Disc, 60/22-22n, 60/22-42n IGU
- Specify glass thickness and fixing type when ordering

## 445.2M.1 Spider Fitting HEAVY WEIGHT



SIDE VIEW

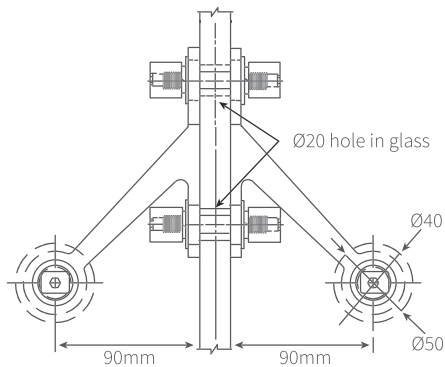


### AVAILABLE FINISHES

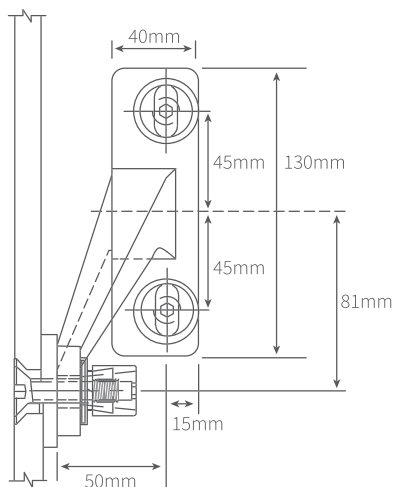
- Satin stainless steel
- Polished stainless steel

### TECHNICAL DETAILS

- 2 way 1 arm glass connector - heavy duty
- M10 Csk, M10 Csk Disc, 60/22-22n, 60/22-42n IGU
- Specify glass thickness and fixing type when ordering

**445.4M.2Y Spider Fitting** HEAVY WEIGHT


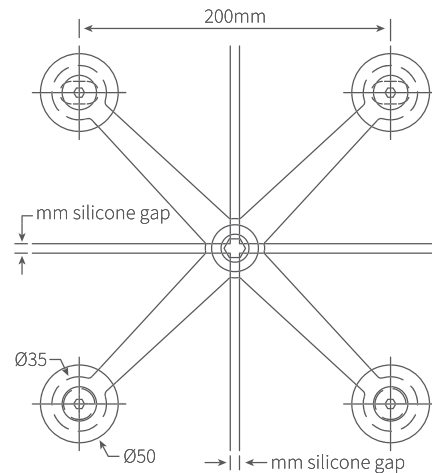
SIDE VIEW


**AVAILABLE FINISHES**

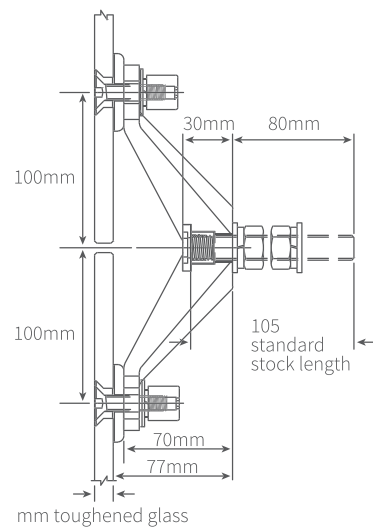
- Satin stainless steel
- Polished stainless steel

**TECHNICAL DETAILS**

- 3 way modified glass connector - heavy duty
- M10 Csk, M10 Csk Disc, 60/22-22n, 60/22-42n IGU
- Specify glass thickness and fixing type when ordering

**446.4M Spider Fitting** HEAVY WEIGHT


SIDE VIEW


**AVAILABLE FINISHES**

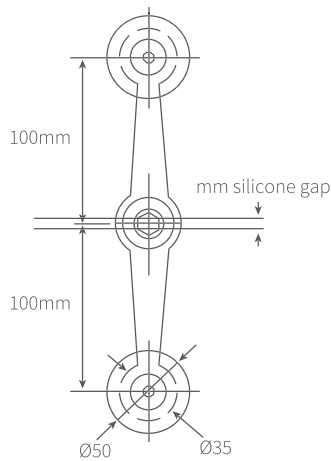
- Satin stainless steel
- Polished stainless steel

**TECHNICAL DETAILS**

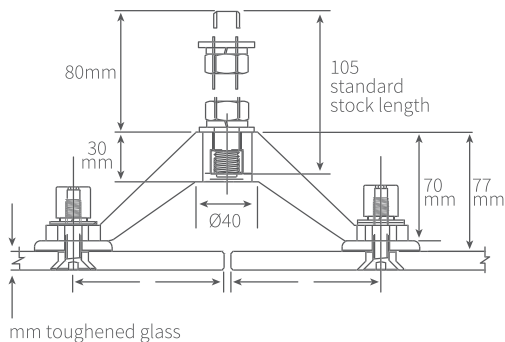
- 4 way glass connector - heavy duty
- M10 Csk, M10 Csk Disc, 60/22-22n, 60/22-42n IGU
- Specify glass thickness and fixing type when ordering



### 446.2M Spider Fitting HEAVY WEIGHT



SIDE VIEW



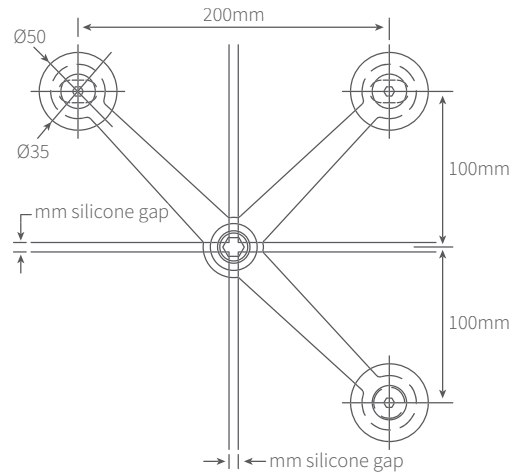
#### AVAILABLE FINISHES

- Satin stainless steel
- Polished stainless steel

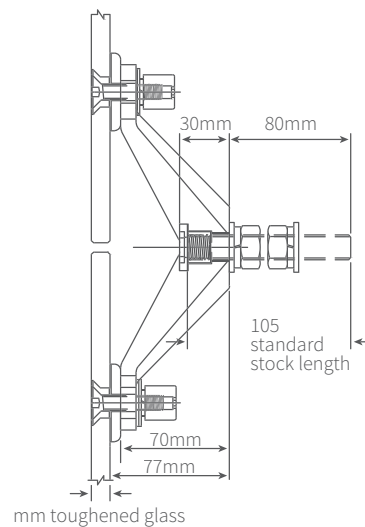
#### TECHNICAL DETAILS

- 2 way glass connector - heavy duty
- M10 Csk, M10 Csk Disc, 60/22-22n, 60/22-42n IGU
- Specify glass thickness and fixing type when ordering

### 446.4M.3 Spider Fitting HEAVY WEIGHT



SIDE VIEW

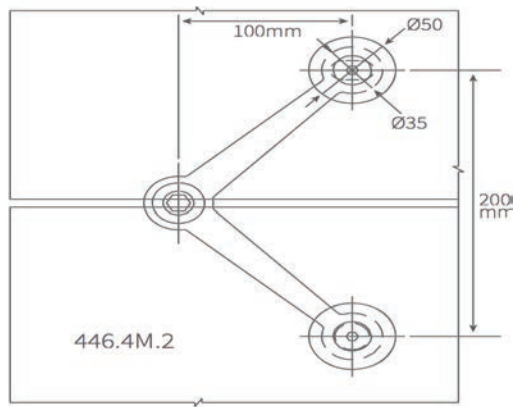


#### AVAILABLE FINISHES

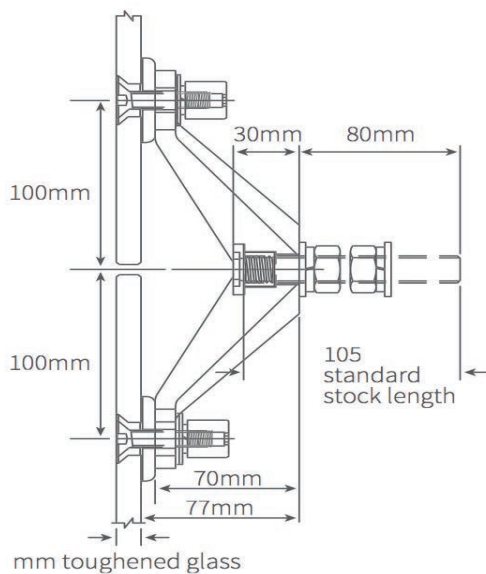
- Satin stainless steel
- Polished stainless steel

#### TECHNICAL DETAILS

- 3 way modified 446/4M
- M10 Csk, M10 Csk Disc, 60/22-22n, 60/22-42n IGU
- Specify glass thickness and fixing type when ordering

**446.4M.2 Spider Fitting HEAVY WEIGHT**


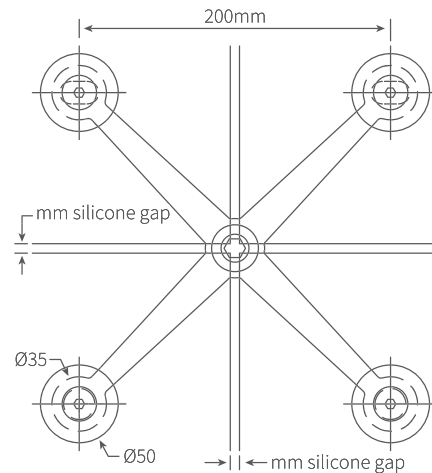
SIDE VIEW


**AVAILABLE FINISHES**

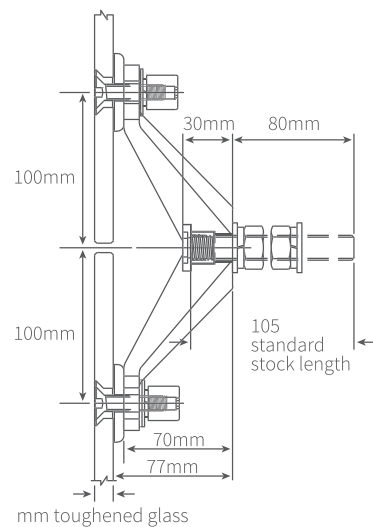
- Satin stainless steel
- Polished stainless steel

**TECHNICAL DETAILS**

- 2 way glass connector
- M10 Csk, M10 Csk Disc, 60/22-22n, 60/22-42n IGU
- Specify glass thickness and fixing type when ordering

**446.4M Spider Fitting HEAVY WEIGHT**


SIDE VIEW

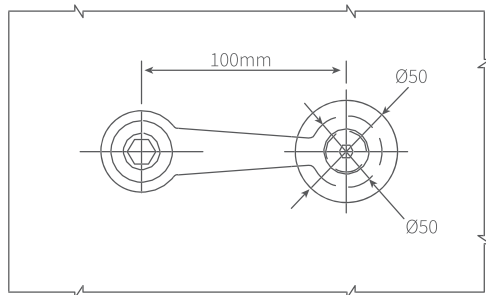

**AVAILABLE FINISHES**

- Satin stainless steel
- Polished stainless steel

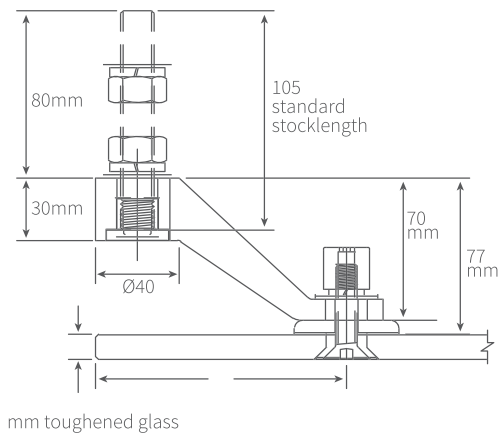
**TECHNICAL DETAILS**

- 4 way glass connector
- M10 Csk, M10 Csk Disc, 60/22-22n, 60/22-42n IGU
- Specify glass thickness and fixing type when ordering

### 446.2M.1 Spider Fitting HEAVY WEIGHT



SIDE VIEW



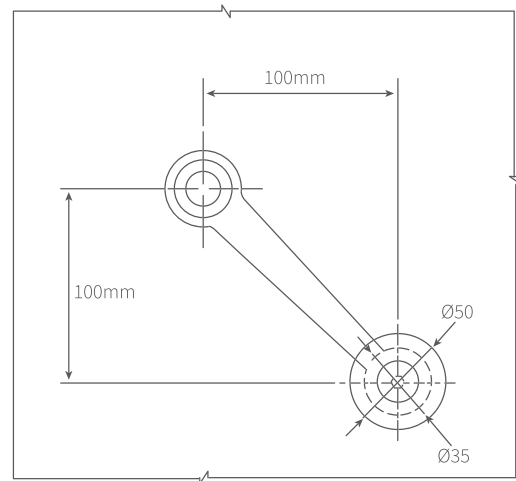
#### AVAILABLE FINISHES

- Satin stainless steel
- Polished stainless steel

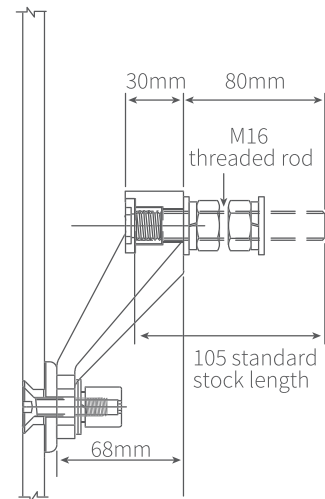
#### TECHNICAL DETAILS

- 1 way 446/2M
- M10 Csk, M10 Csk Disc, 60/22-22n, 60/22-42n IGU
- Specify glass thickness and fixing type when ordering

### 446.4M.1 Spider Fitting HEAVY WEIGHT



SIDE VIEW

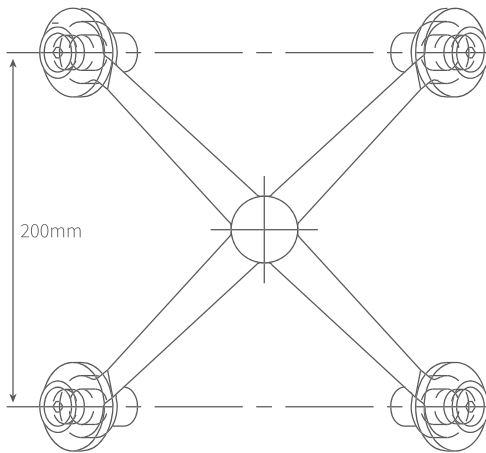


#### AVAILABLE FINISHES

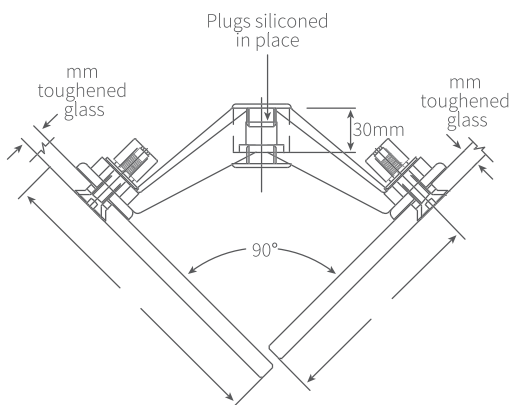
- Satin stainless steel
- Polished stainless steel

#### TECHNICAL DETAILS

- 316 grade stainless steel
- M10 Csk, M10 Csk Disc, 60/22-22n, 60/22-42n IGU
- Specify glass thickness and fixing type when ordering

**446.4M.90° Spider Fitting**


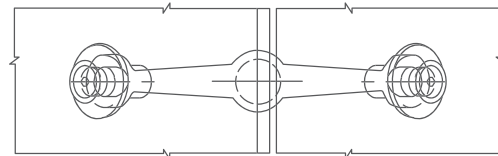
SIDE VIEW


**AVAILABLE FINISHES**

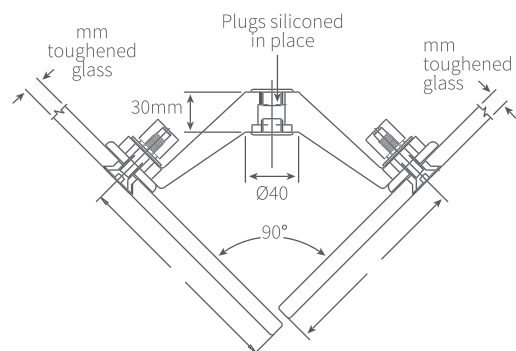
- Satin stainless steel
- Polished stainless steel

**TECHNICAL DETAILS**

- 4 way glass connector 90 degrees
- M10 Csk, M10 Csk Disc, 60/22-22n, 60/22-42n IGU
- Specify glass thickness and fixing type when ordering

**446.2M.90° Spider Fitting**


SIDE VIEW

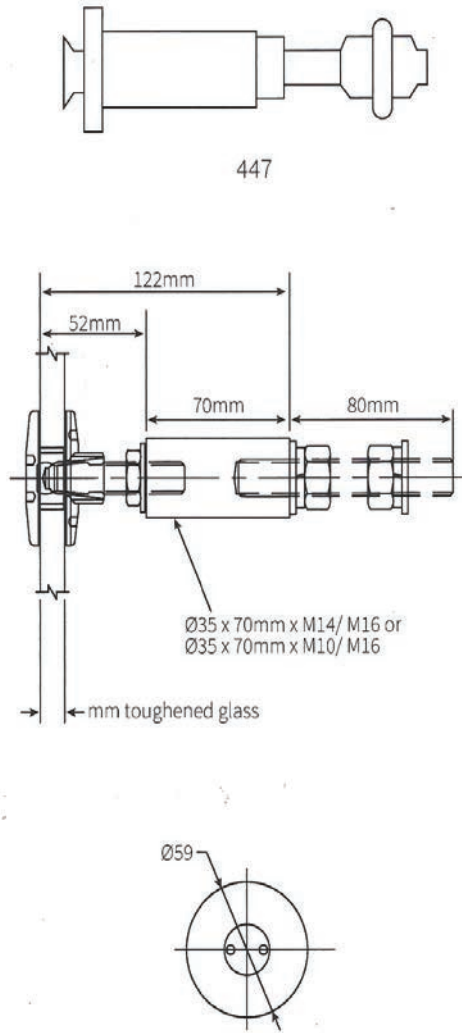

**AVAILABLE FINISHES**

- Satin stainless steel
- Polished stainless steel

**TECHNICAL DETAILS**

- 2 way glass connector 90 degrees
- M10 Csk, M10 Csk Disc, 60/22-22n, 60/22-42n IGU
- Specify glass thickness and fixing type when ordering

## 447 Glass Connector



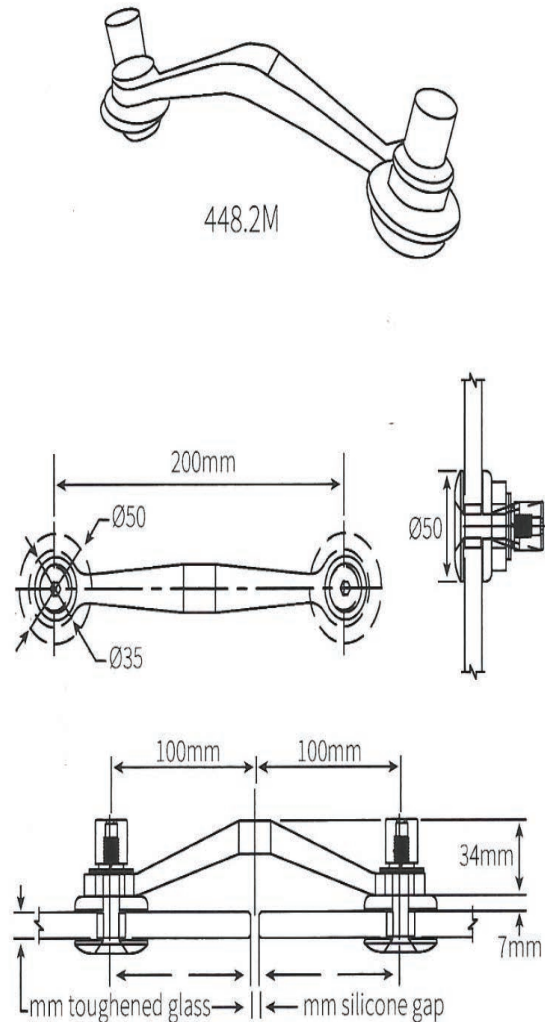
## AVAILABLE FINISHES

- Satin stainless steel
- Polished stainless steel

## TECHNICAL DETAILS

- 1 way glass connector
- M10 Csk, M10 Csk Disc, 60/22-22n, 60/22-42n IGU
- Specify glass thickness and fixing type when ordering

## 448.2M Link Connector

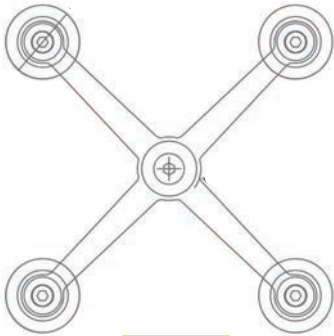


## AVAILABLE FINISHES

- Satin stainless steel
- Polished stainless steel

## TECHNICAL DETAILS

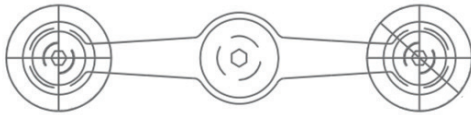
- 2 way link connector
- M10 Csk, M10 Csk Disc, 60/22-22n, 60/22-42n IGU
- Specify glass thickness and fixing type when ordering

**443.4 Spider Fitting****AVAILABLE FINISHES**

- Satin stainless steel
- Polished stainless steel

**TECHNICAL DETAILS**

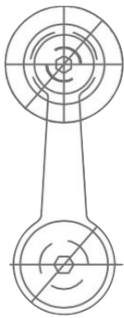
- 4 way glass connector for small elevations & balustrades - light duty
- M8 Csk, M8 Csk disc
- Specify glass thickness and fixing type when ordering

**443.2 Spider Fitting****AVAILABLE FINISHES**

- Satin stainless steel
- Polished stainless steel

**TECHNICAL DETAILS**

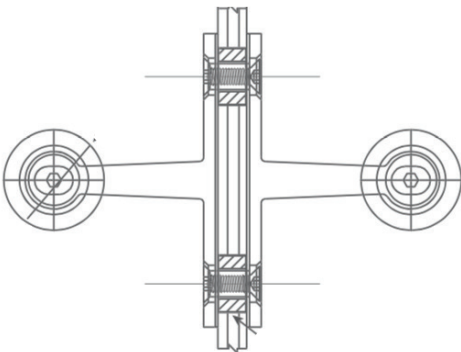
- 2 way glass connector for small elevations & balustrades - light duty
- M8 Csk, M8 Csk disc
- Specify glass thickness and fixing type when ordering

**443.2.1 Spider Fitting****AVAILABLE FINISHES**

- Satin stainless steel
- Polished stainless steel

**TECHNICAL DETAILS**

- 1 way glass connector for small elevations & balustrades - light duty
- M8 Csk, M8 Csk disc
- Specify glass thickness and fixing type when ordering

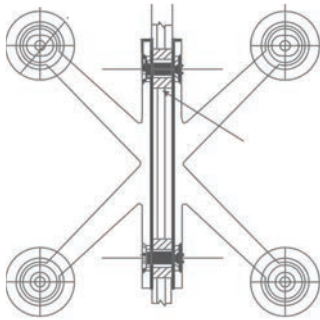
**444.2 Spider Fitting****AVAILABLE FINISHES**

- Satin stainless steel
- Polished stainless steel

**TECHNICAL DETAILS**

- 4 way glass connector for balustrades - light duty
- M8 Csk, M8 Csk disc
- Specify glass thickness and fixing type when ordering

#### 444.4 Spider Fitting



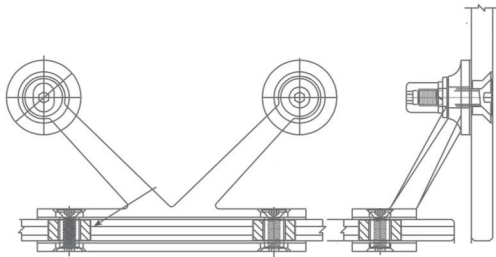
##### AVAILABLE FINISHES

- Satin stainless steel
- Polished stainless steel

##### TECHNICAL DETAILS

- 4 way glass connector for balustrades - light duty
- M8 Csk, M8 Csk disc
- Specify glass thickness and fixing type when ordering

#### 444.4.2 Spider Fitting



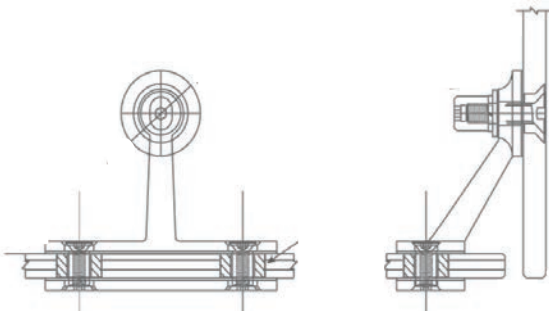
##### AVAILABLE FINISHES

- Satin stainless steel
- Polished stainless steel

##### TECHNICAL DETAILS

- 4 way 1 side glass connector for balustrades - light duty
- M8 Csk, M8 Csk disc
- Specify glass thickness and fixing type when ordering

#### 444.2.1 Spider Fitting



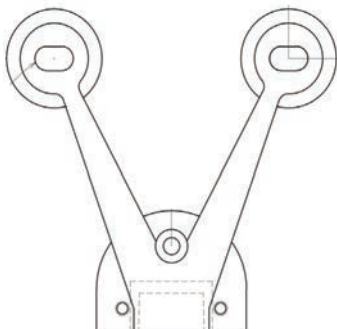
##### AVAILABLE FINISHES

- Satin stainless steel
- Polished stainless steel

##### TECHNICAL DETAILS

- 2 way 1 side glass connector for balustrades - light duty
- M8 Csk, M8 Csk disc
- Specify glass thickness and fixing type when ordering

#### 451 Bottom Pivot Door Spider



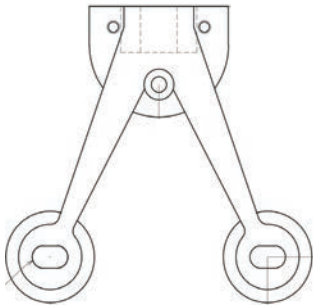
##### AVAILABLE FINISHES

- Satin stainless steel
- Polished stainless steel

##### TECHNICAL DETAILS

- Bottom Pivot Door Spider
- M8 Csk, M8 Csk

## 452 Top Pivot Door Spider



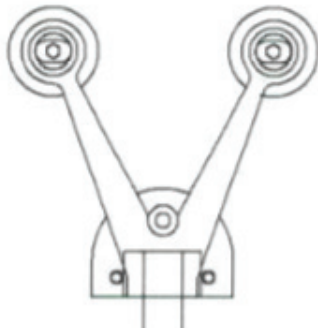
## AVAILABLE FINISHES

- Satin stainless steel
- Polished stainless steel

## TECHNICAL DETAILS

- Top pivot door spider
- M8 Csk, M8 Csk

## 483 Transom Panel Pivot Door Spider



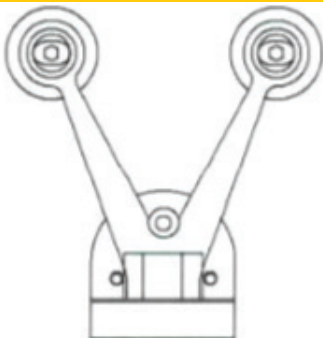
## AVAILABLE FINISHES

- Satin stainless steel
- Polished stainless steel

## TECHNICAL DETAILS

- Bottom pivot door spider
- M8 Csk, M8 Csk

## 485 Transom Spider Door Stop



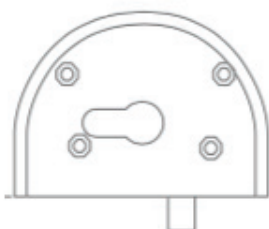
## AVAILABLE FINISHES

- Satin stainless steel
- Polished stainless steel

## TECHNICAL DETAILS

- Transom spider door stop
- M8 Csk, M8 Csk

## 456 Profile Plunger Lock



## AVAILABLE FINISHES

- Satin stainless steel

## TECHNICAL DETAILS

- Profile plunger lock c/w euro lock cylinder and snib



## SPIDERDOOR Pivot Door System



### SpiderDoor Pivot Door System

The Austvision SpiderDoor System uses specially developed spider pivot door fittings for internal and external door entries and to compliment Austvision glass systems.

#### TYPES

The SpiderDoor uses 4 fittings:

- 451 - Two arm spider bottom pivot
- 452 - Two arm spider top pivot series
- 483 - Two arm overlite pivot housing
- 456 - Half moon lock fitting

Glass fittings are normally M8 CSK or M8 CSK Disc fittings to suit the application.

#### MATERIAL AND FINISH

The fittings are cast 316 marine grade stainless satin and polished finish.

#### INSTALLATION

The SpiderDoor system can be used with Metro GlassTech, TempaFloat, TempaSoak, TempaScreen or TempPrint Toughened Safety Glass (TSG)

#### BENEFITS

The SpiderDoor uses 4 fittings:

- Easy to measure and install
- Fits to standard floor springs and pivots
- Suitable for 10 and 12mm toughened safety glass
- Good corrosion resistance
- Compliments spider structural glass wall fittings
- Range of fitting configuration to suit the application

#### COMPLIANCE

The SpiderDoors system can be used for 10 and 12mm frameless glass doors to suit the typical restrictions on patch fitting doors as detailed in Technical Bulletin 40. Guidance notes for frameless glass doors and assemblies.

**SPIDERFRAME** Structural Glass System

## SpiderDoor Pivot Door System

The Austvision SpiderFrame system is a specifically developed elliptical shaped aluminium extrusion and spider connection system for structural glass walls and screens, shopfront, display walls or canopies

The SpiderFrame uses simple techniques for connecting Toughened Safety Glass panels to the SpiderFrame, which can be used as a vertical post or horizontal transom or canopy supports. The SpiderFrame can also be used cantilevered in short sections to replace glass fins or the like, and even for balustrade posts. It is connected to the structure with special profiled feet and can be reinforced with steel RHS inserts for high loadings over long spans.

### TYPES

The SpiderDoor has 3 fixing options:

- AlphaLink - 50/150 link connector
- 443 series - 4 or 2 light weight spider with a central M10 fixing
- 446 series - 4 or 2 way heavy duty spider with M16 fixing

Glass bolt connectors can be countersunk, disc or swivel to suit the application and glass thickness.

### MATERIAL AND FINISH

The SpiderFrame is a 150 x 72mm elliptical aluminium extrusion which can be anodised or powder coated to suit including the profile clip on covers to conceal fixing slots. The extrusion lengths are 4.5m but can be joined. The fixing feet are stainless steel or mild steel along with the RHS stiffener. The spider fittings are cast 316 marine grade stainless steel and are available in satin and polished stainless finish.

### INSTALLATION

The SpiderFrame can be used with Metro GlassTech TempaFloat, TempaSoak, TempScreen or TempaPrint Toughened Safety Glass (TSG) or safeLite Toughened Laminated Safety Glass (TLSG)

### BENEFITS

- Easy to measure and install
- Can be stiffened for large spans
- Adjustable
- Suitable for 8mm toughened to 20mm toughened laminated glass
- Can be used with point fixed IGUs
- Appearance profile design
- Range of fitting options

## SPIDERFRAME Structural Glass System

### COMPLIANCE

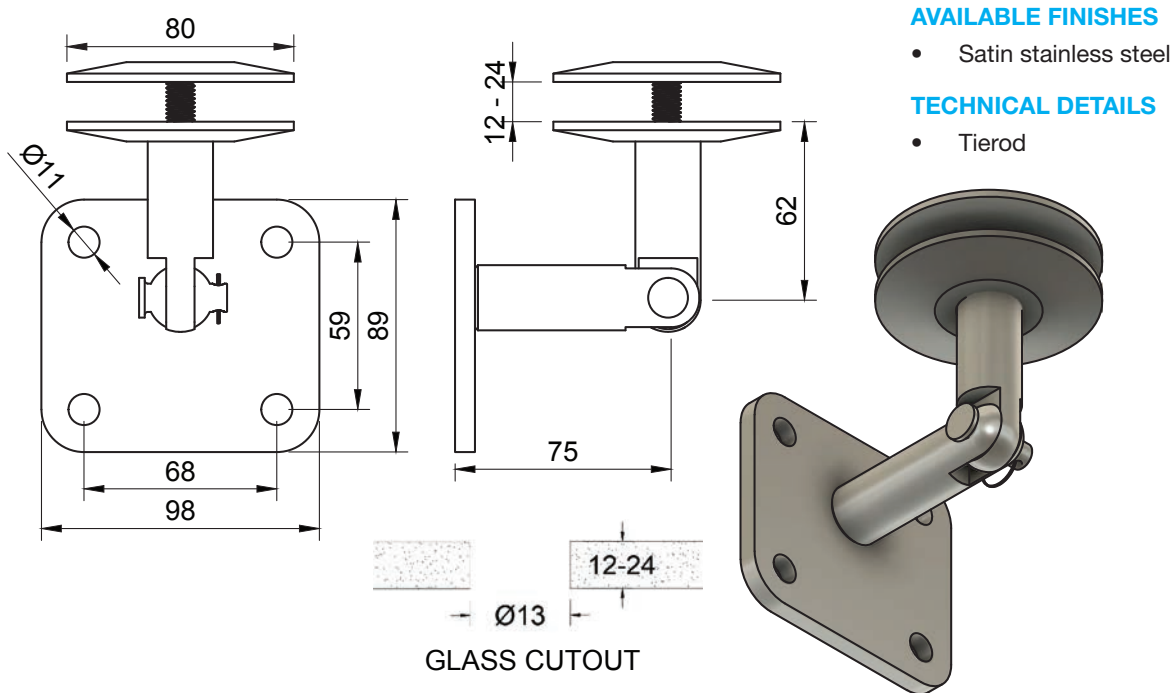
The SpiderFrame is specifically designed for each application as the post span and width modules are based on the design loads for the project.



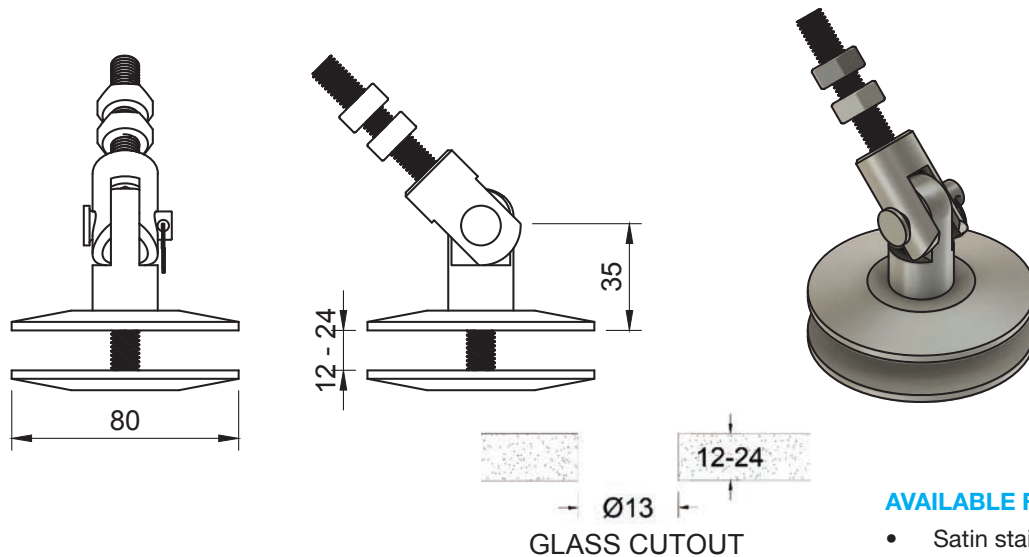
## SA8300E Canopy System



## SA8300E-4 Bottom Wall Mount Fixing Plate Square SSS



## SA8300E-5 Glass Fixing For Tierod SSS



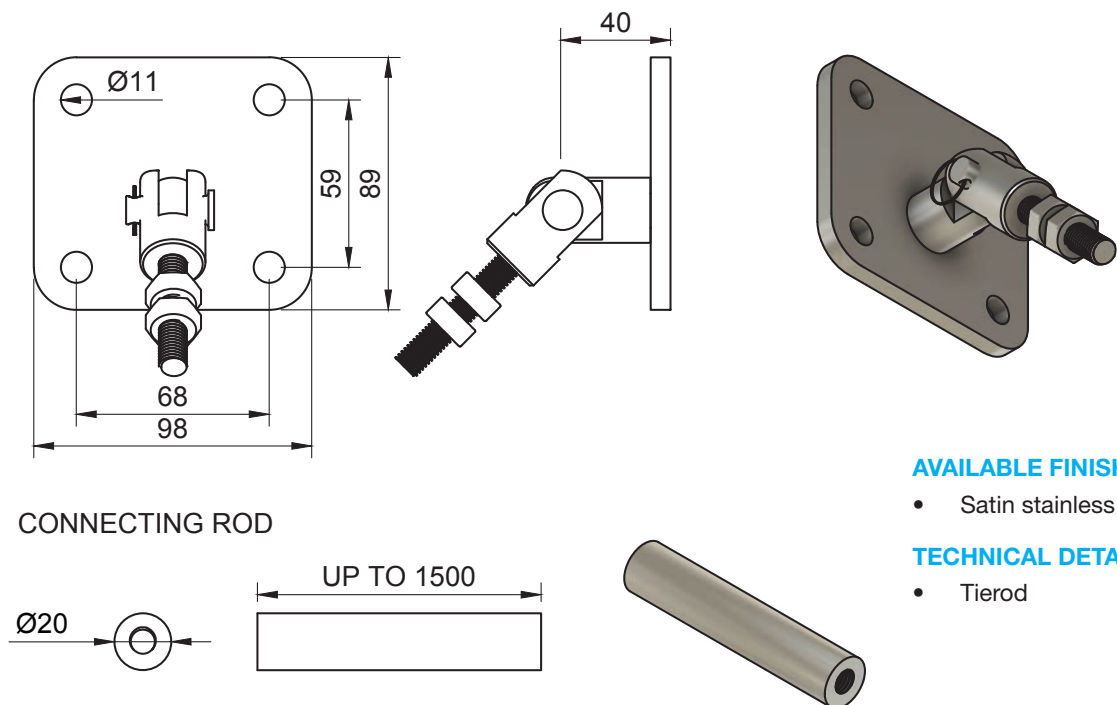
### AVAILABLE FINISHES

- Satin stainless steel

### TECHNICAL DETAILS

- Tierod

## SA8300E-6 Top Wall Mount Fitting For Tierod



### AVAILABLE FINISHES

- Satin stainless steel

### TECHNICAL DETAILS

- Tierod

## Glass Canopy - Curved

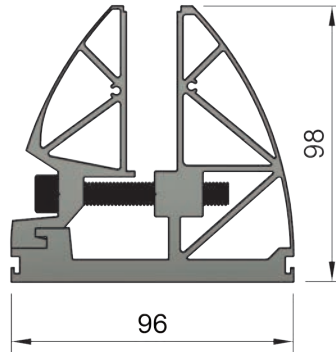
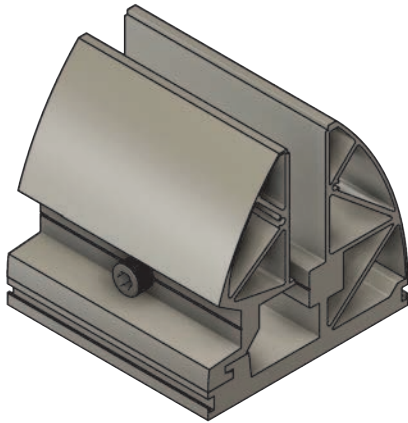


## Glass Canopy - Square





## HD-L003A-01S



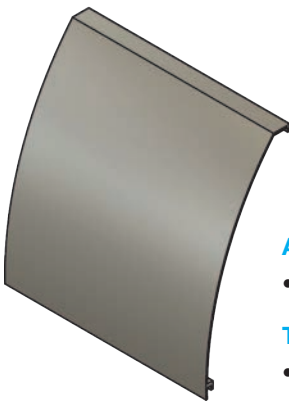
### AVAILABLE FINISHES

- Natural Anodised

### TECHNICAL DETAILS

- Wall Canopy

## HD-L003A-03



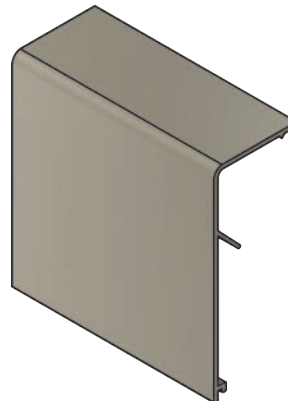
### AVAILABLE FINISHES

- Natural Anodised

### TECHNICAL DETAILS

- Wall Canopy

## HD-L003A-04



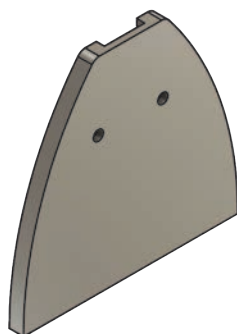
### AVAILABLE FINISHES

- Natural Anodised

### TECHNICAL DETAILS

- Wall Canopy

## HD-L003A-05



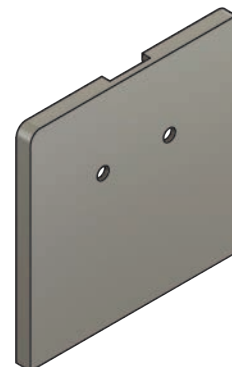
### AVAILABLE FINISHES

- Natural Anodised

### TECHNICAL DETAILS

- Wall Canopy

## HD-L003A-06



### AVAILABLE FINISHES

- Natural Anodised

### TECHNICAL DETAILS

- Wall Canopy