

Milano Folding Door System

The edge hung Milano folding door system incorporates elegantly crafted cast stainless steel fittings

Rollers mounted at the glass corners allow the panels to fold clear of one end and be stacked either inside or outside of the room. Designed for glass panel thickness of 8/10/12mm with a gap between the glass panels of less than 3mm. Several different handle and locking arrangements are available for various layouts. We would be pleased to discuss these with you.

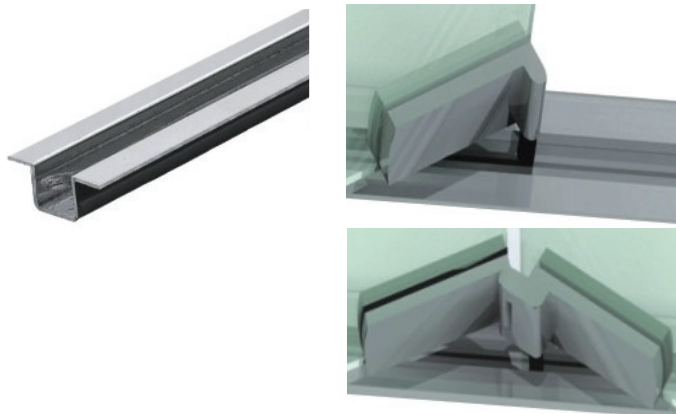
LS-13-CC Milano Stainless Steel Sliding Door Lock



AVAILABLE FINISHES

- Satin stainless steel

DT-215 Milano Stainless Steel Floor Guide



AVAILABLE FINISHES

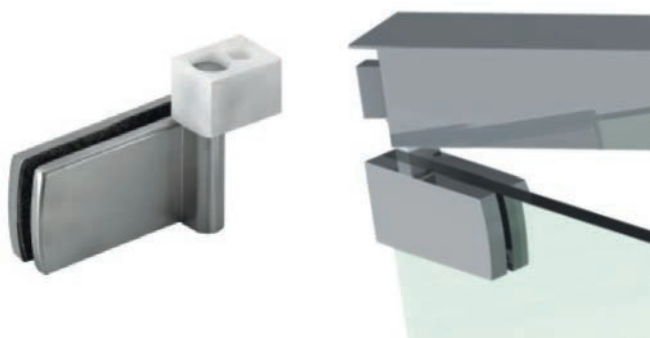
- Satin stainless steel

TECHNICAL DETAILS

- Rollers mounted at the glass corners allow the panels to fold clear of one end and be stacked either inside or outside of the room
- Designed for glass panel thickness' of 8mm, 10mm or 12mm with a gap between the glass panels of less than 3mm
- Several different handle and locking arrangements are available

Specify glass thickness when ordering

DF-216



AVAILABLE FINISHES

- Satin stainless steel

TECHNICAL DETAILS

- Available either as a 4 or 5 panel kit, or individual components
- Top track stock length 4m with a clear anodised finish as standard
- Bottom track is 4m pressed stainless steel with satin finish
- All glass is to be monolithic and fully toughened in accordance with AS 2208

Specify glass thickness when ordering

DF-206



AVAILABLE FINISHES

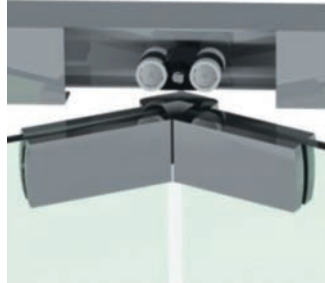
- Satin stainless steel

TECHNICAL DETAILS

- Available either as a 4 or 5 panel kit, or individual components
- Top track stock length 4m with a clear anodised finish as standard
- Bottom track is 4m pressed stainless steel with satin finish
- All glass is to be monolithic and fully toughened in accordance with AS 2208

Specify glass thickness when ordering

DF-210



AVAILABLE FINISHES

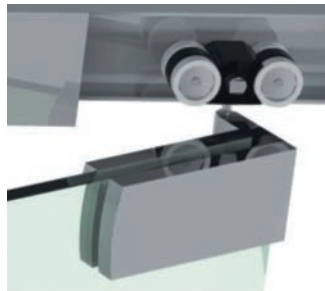
- Satin stainless steel

TECHNICAL DETAILS

- Available either as a 4 or 5 panel kit, or individual components
- Top track stock length 4m with a clear anodised finish as standard
- Bottom track is 4m pressed stainless steel with satin finish
- All glass is to be monolithic and fully toughened in accordance with AS 2208

Specify glass thickness when ordering

DF-211



AVAILABLE FINISHES

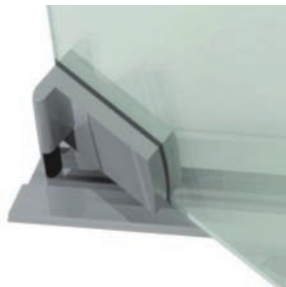
- Satin stainless steel

TECHNICAL DETAILS

- Available either as a 4 or 5 panel kit, or individual components
- Top track stock length 4m with a clear anodised finish as standard
- Bottom track is 4m pressed stainless steel with satin finish
- All glass is to be monolithic and fully toughened in accordance with AS 2208

Specify glass thickness when ordering

DF-217



AVAILABLE FINISHES

- Satin stainless steel

TECHNICAL DETAILS

- Available either as a 4 or 5 panel kit, or individual components
- Top track stock length 4m with a clear anodised finish as standard
- Bottom track is 4m pressed stainless steel with satin finish
- All glass is to be monolithic and fully toughened in accordance with AS 2208

Specify glass thickness when ordering

DF-213



AVAILABLE FINISHES

- Satin stainless steel

TECHNICAL DETAILS

- Available either as a 4 or 5 panel kit, or individual components
- Top track stock length 4m with a clear anodised finish as standard
- Bottom track is 4m pressed stainless steel with satin finish
- All glass is to be monolithic and fully toughened in accordance with AS 2208

Specify glass thickness when ordering

DF-212



AVAILABLE FINISHES

- Satin stainless steel

TECHNICAL DETAILS

- Available either as a 4 or 5 panel kit, or individual components
- Top track stock length 4m with a clear anodised finish as standard
- Bottom track is 4m pressed stainless steel with satin finish
- All glass is to be monolithic and fully toughened in accordance with AS 2208

Specify glass thickness when ordering

DF-214



AVAILABLE FINISHES

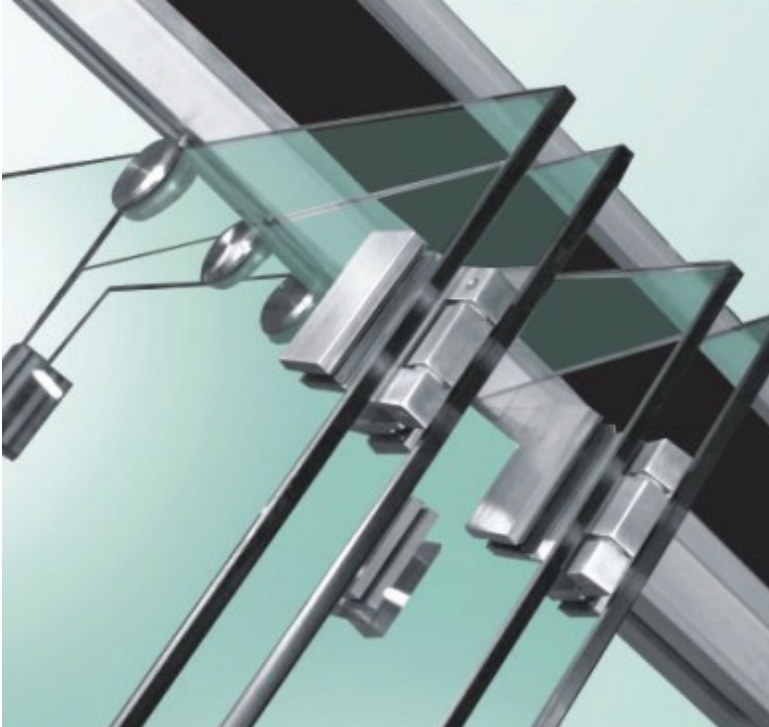
- Satin stainless steel

TECHNICAL DETAILS

- Available either as a 4 or 5 panel kit, or individual components
- Top track stock length 4m with a clear anodised finish as standard
- Bottom track is 4m pressed stainless steel with satin finish
- All glass is to be monolithic and fully toughened in accordance with AS 2208

Specify glass thickness when ordering

Napoli Folding Door System



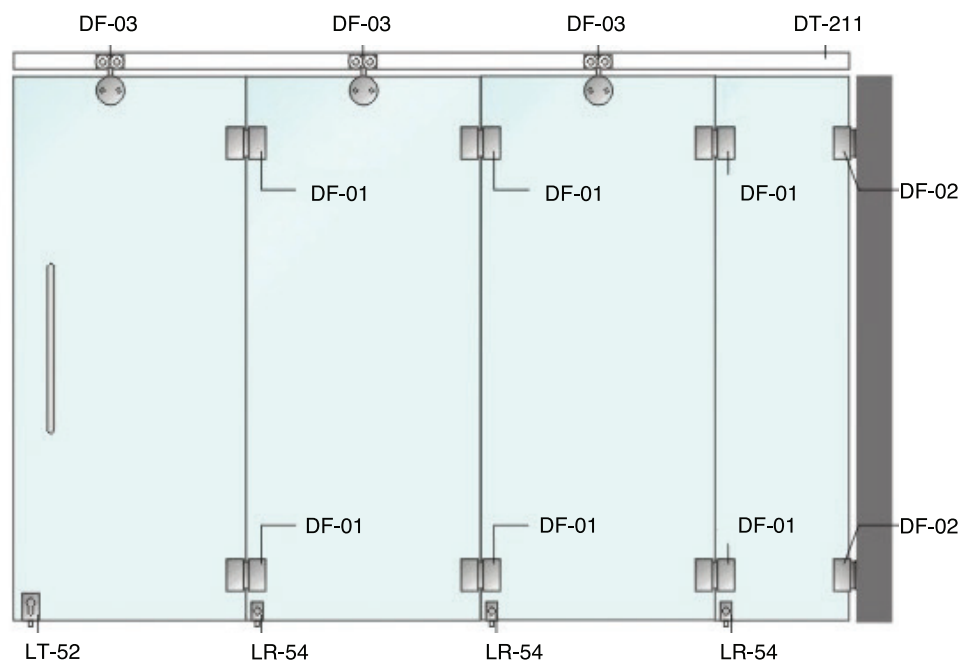
Perfect design and elegant style

Panels of NAPOLI series of movable glass partitions can form a continuous transparent partition without the requirement for any frame. Rollers mounted at the top centre of the glass panels provide balanced support, and together with the screw fixed hinges in the first panel, eliminate the requirement for a bottom guide track.

Hinges are mounted onto the glass with no visible fixings providing a sleek and stylish appearance.

Overhead track can be either surface mounted or recessed into the ceiling.

Napoli Folding Door System Diagram

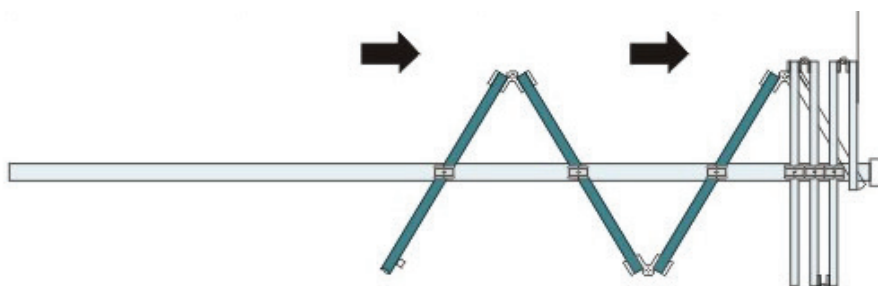


Folding door with
central roller, pull
handle and bottom
floor lock

Folding door with
central roller and
floor bolt

Folding door with
central roller and
floor bolt

Half panel
folding door
with screw
fixed hinges
and floor
bolt



DT-211



AVAILABLE FINISHES

- Satin stainless steel

*Specify glass thickness
when ordering*

TECHNICAL DETAILS

- Available either as a 4 or 5 panel kit, or individual components
- Handles to be ordered separately
- Top track stock length 4m with a clear anodised finish as standard
- All glass is to be monolithic and fully toughened in accordance with AS 2208

DF-03



AVAILABLE FINISHES

- Satin stainless steel

*Specify glass thickness
when ordering*

TECHNICAL DETAILS

- Available either as a 4 or 5 panel kit, or individual components
- Handles to be ordered separately
- Top track stock length 4m with a clear anodised finish as standard
- All glass is to be monolithic and fully toughened in accordance with AS 2208

DF-01



AVAILABLE FINISHES

- Satin stainless steel

*Specify glass thickness
when ordering*

TECHNICAL DETAILS

- Available either as a 4 or 5 panel kit, or individual components
- Handles to be ordered separately
- Top track stock length 4m with a clear anodised finish as standard
- All glass is to be monolithic and fully toughened in accordance with AS 2208

DF-02



AVAILABLE FINISHES

- Satin stainless steel

*Specify glass thickness
when ordering*

TECHNICAL DETAILS

- Available either as a 4 or 5 panel kit, or individual components
- Handles to be ordered separately
- Top track stock length 4m with a clear anodised finish as standard
- All glass is to be monolithic and fully toughened in accordance with AS 2208

DLT-52



AVAILABLE FINISHES

- Satin stainless steel

*Specify glass thickness
when ordering*

TECHNICAL DETAILS

- Available either as a 4 or 5 panel kit, or individual components
- Handles to be ordered separately
- Top track stock length 4m with a clear anodised finish as standard
- All glass is to be monolithic and fully toughened in accordance with AS 2208

DLT-54



AVAILABLE FINISHES

- Satin stainless steel

*Specify glass thickness
when ordering*

TECHNICAL DETAILS

- Available either as a 4 or 5 panel kit, or individual components
- Handles to be ordered separately
- Top track stock length 4m with a clear anodised finish as standard
- All glass is to be monolithic and fully toughened in accordance with AS 2208

AK-100



AVAILABLE FINISHES

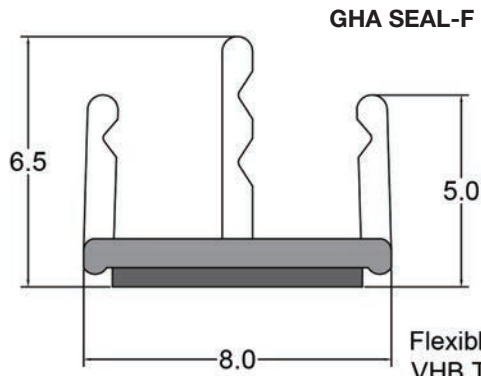
- Satin stainless steel

*Specify glass thickness
when ordering*

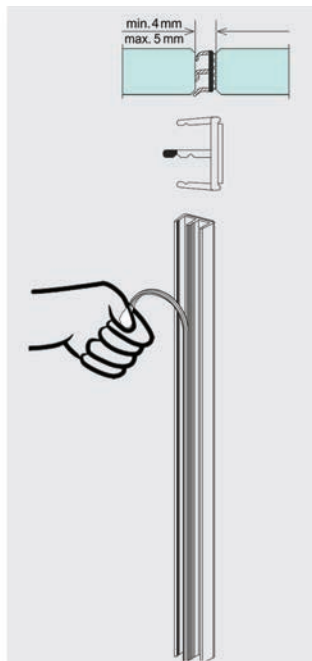
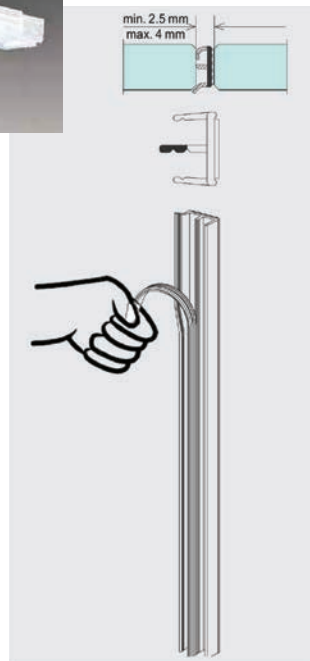
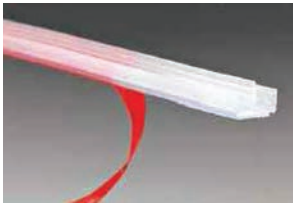
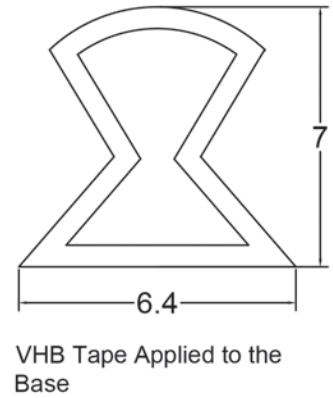
TECHNICAL DETAILS

- Available either as a 4 or 5 panel kit, or individual components
- Handles to be ordered separately
- Top track stock length 4m with a clear anodised finish as standard
- All glass is to be monolithic and fully toughened in accordance with AS 2208

GHA Pivot Seals – GHA Seal-F & GHA Seal-B



GHA SEAL-B



Door Seals – 12mm Touchened

WS-12-06



WS-12-07



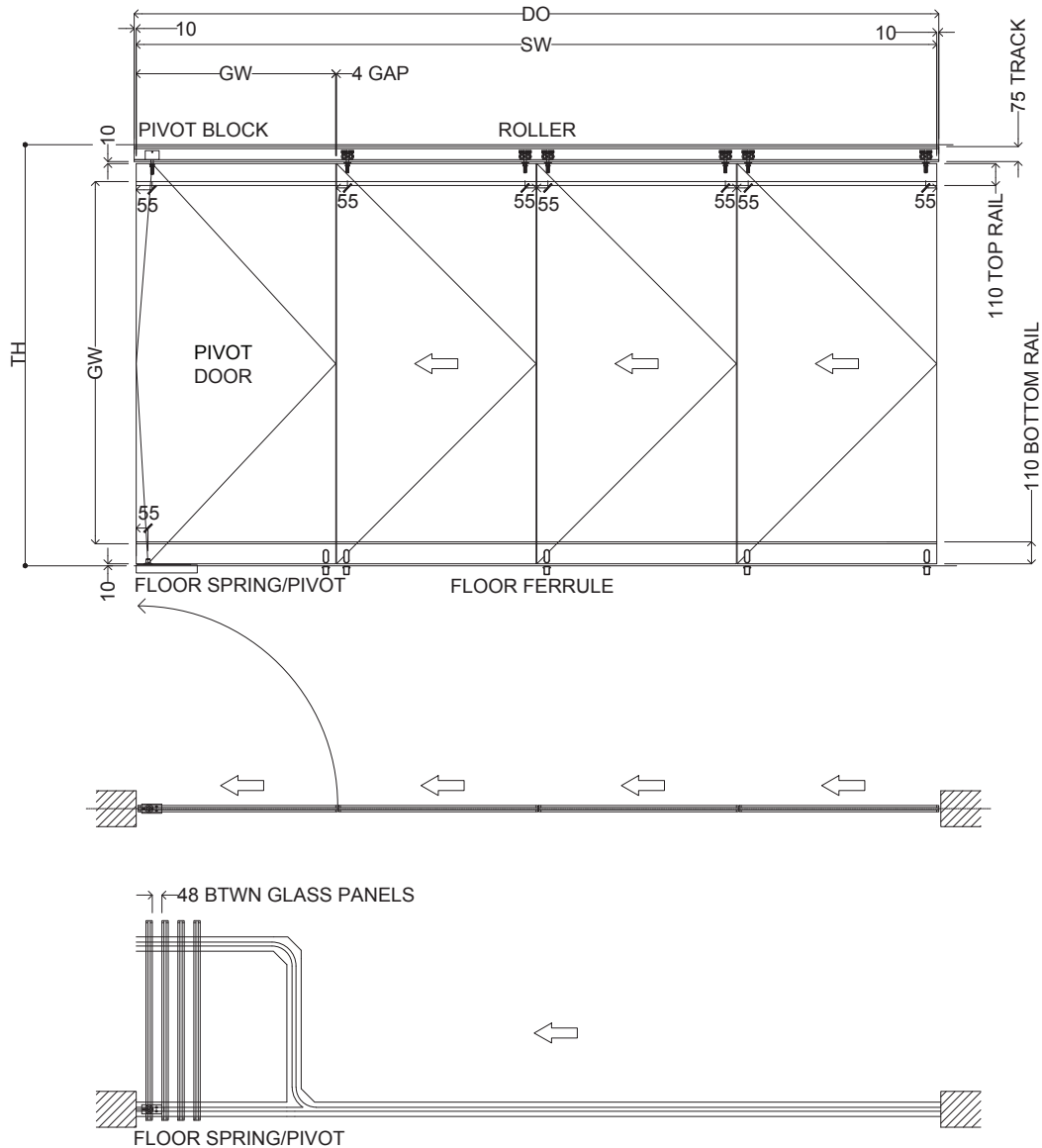
WS-12-11



8900B Stacking Door System

**DOORS MOVE SEPERATLY
GLIDE SMOOTHLY**

8900B Stacking Door System

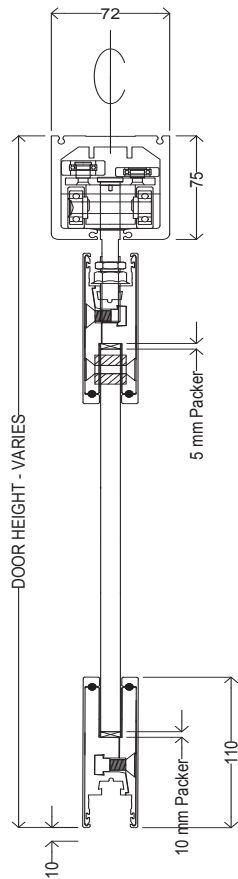
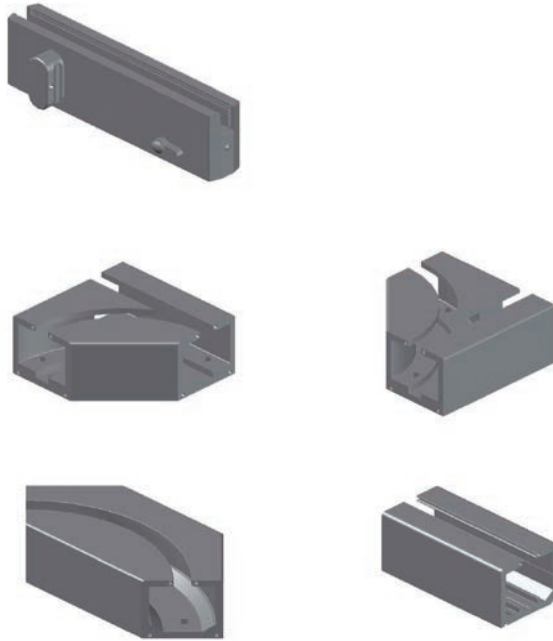


TECHNICAL DETAILS

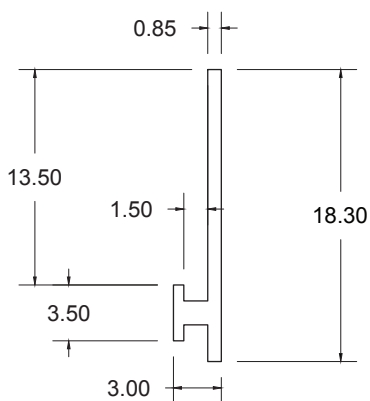
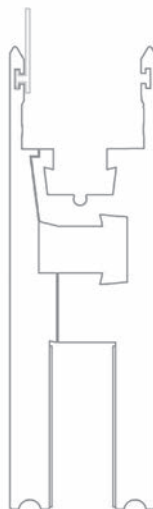
- For installation of 10 - 15 mm glass thickness
- Max. weight of door panels 100 kg
- Calculation of glass height
 $GH = TH - 240$
 max. 3000 mm
- Calculation of glass width
 $SW = DO - 20$
 $GW = [SW - 4 * (ND - 1)] * ND$
 max. 1100 mm

TH = Total height FFL to Top of Track (site measure)
 GH = Glass height
 DO = Daylight opening
 SW = Overall system width
 ND = Number of doors
 GW = Glass width
 t = Glass thickness

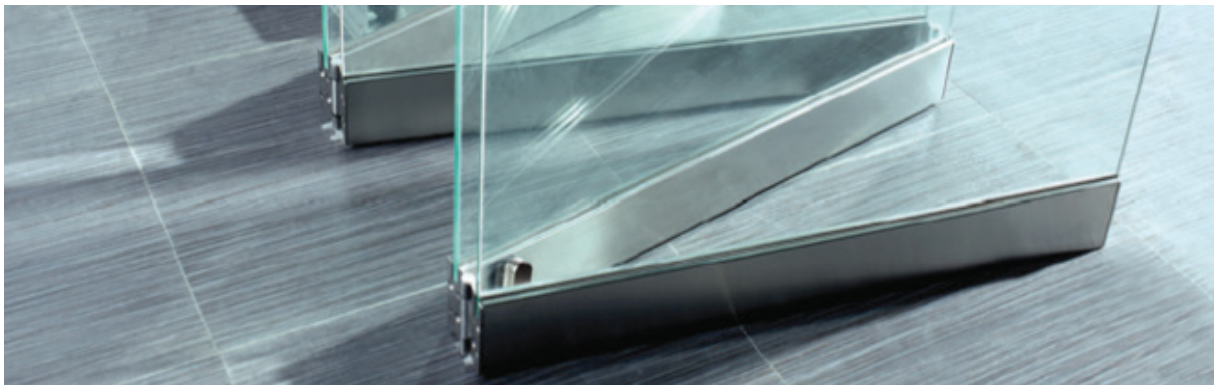
8900B Components


FIXING
COMPONENTS


GHA Stacking & Bifold Top Seal

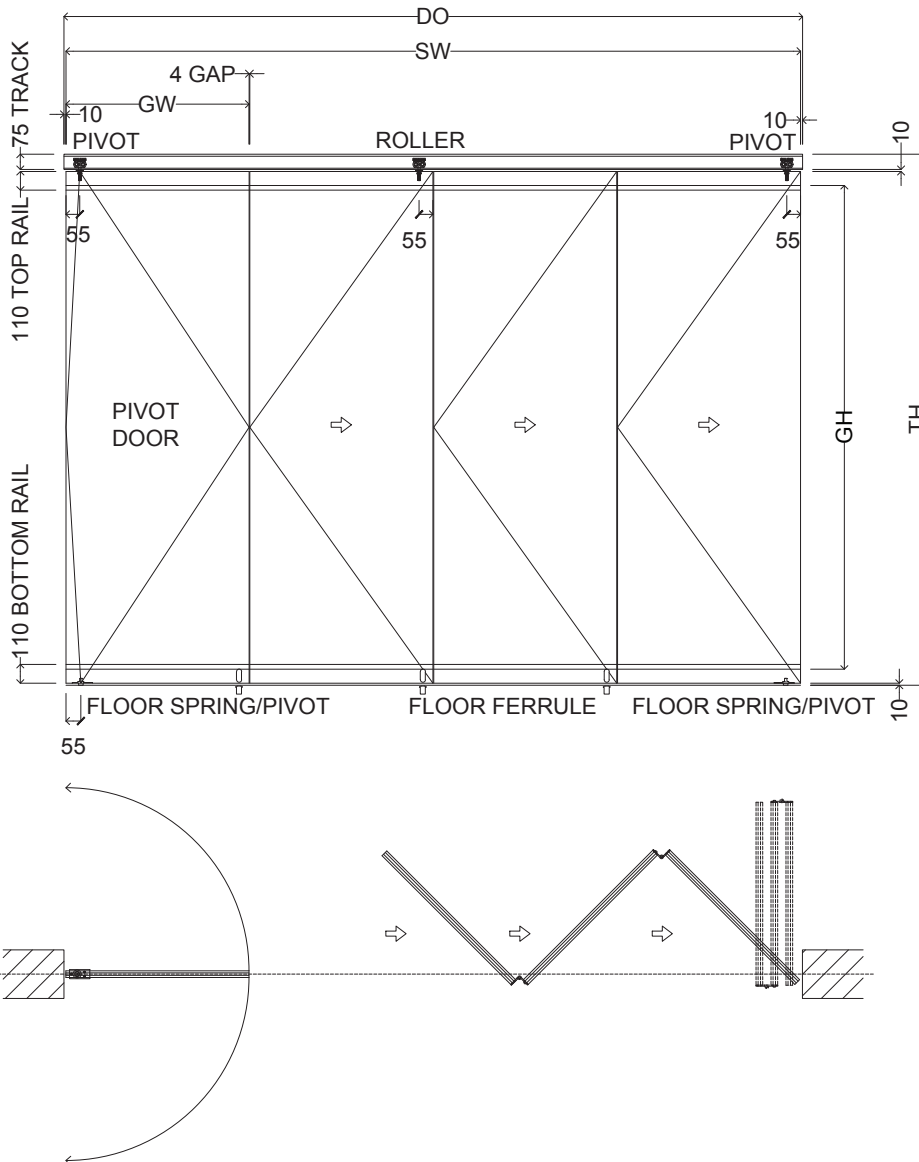

INSTALLATION


8900W Bifold Door System



USE OPENING DOORS
AND BIFOLDING
TOGETHER CAN COMBINE
AND BIFOLD BOTH LEFT
AND RIGHT OPENING

8900W Bifold Door System



TECHNICAL DETAILS

- For installation of 10 - 15 mm glass thickness
- Max. weight of door panels 100 kg
- Calculation of glass height
 $GH = TH - 235$
 max. 3000 mm
- Calculation of glass width
 $SW = DO - 20$
 $GW = [SW - 4 * (ND - 1)] * ND$
 max. 1100 mm

TH = Total height FFL to Top of Track (site measure)
 GH = Glass height
 DO = Daylight opening
 SW = Overall system width
 ND = Number of doors
 GW = Glass width
 t = Glass thickness

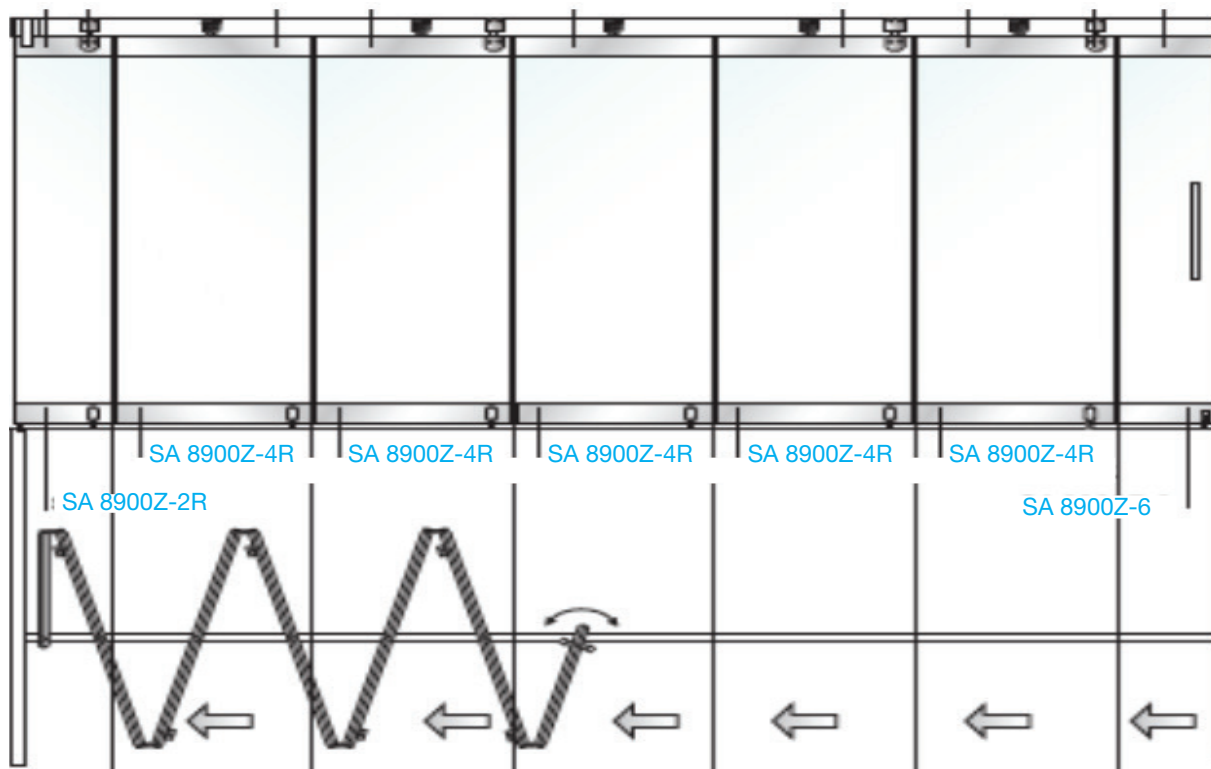
8900Z Using 1/2 Panels to Have Complete Opening



Simple and Easy

Folding glass partition panels are of streamlined design without any obstruction therein; in addition, the glass curtain walls are more transparent; both upper and lower door strips are connected into integrity, to ensure stability and smoothness; easy operation ensures only one person completes the whole partitioning process, satisfactory for the partitioning of various spaces and shops.

8900Z Bifold Door System



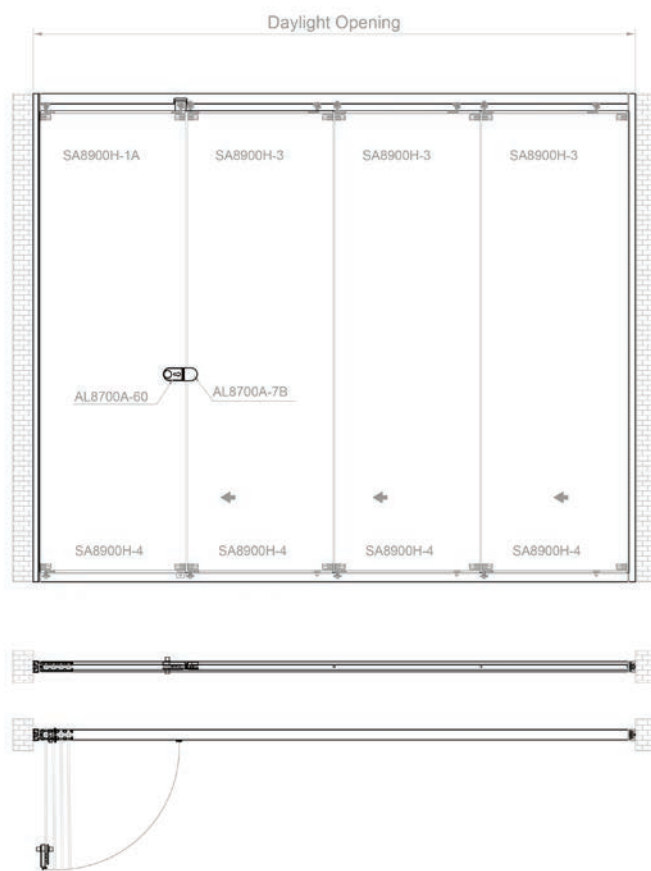
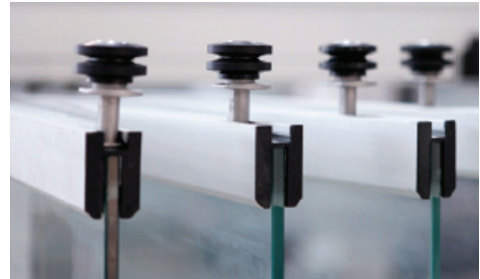
The beginning folding door leaf is equipped with upper and lower fixed door leaves and bottom lock	Folding door leaf, folding door hanging pulley and bottom bolt	Folding door leaf, folding door hanging pulley and bottom bolt	Folding door leaf, folding door hanging pulley and bottom bolt	Folding door leaf, folding door hanging pulley and bottom bolt	Folding door leaf, folding door hanging pulley and bottom bolt	End folding door leaf equipped with upper and lower locks
--	--	--	--	--	--	---

3000mm	3000mm	3000mm	3000mm	3000mm	3000mm	3000mm
	1000mm	1000mm	1000mm	1000mm	1000mm	
	90kg	90kg	90kg	90kg	90kg	

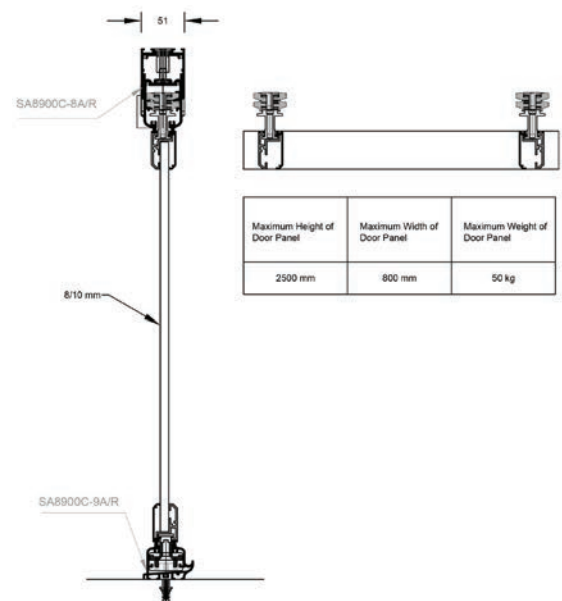


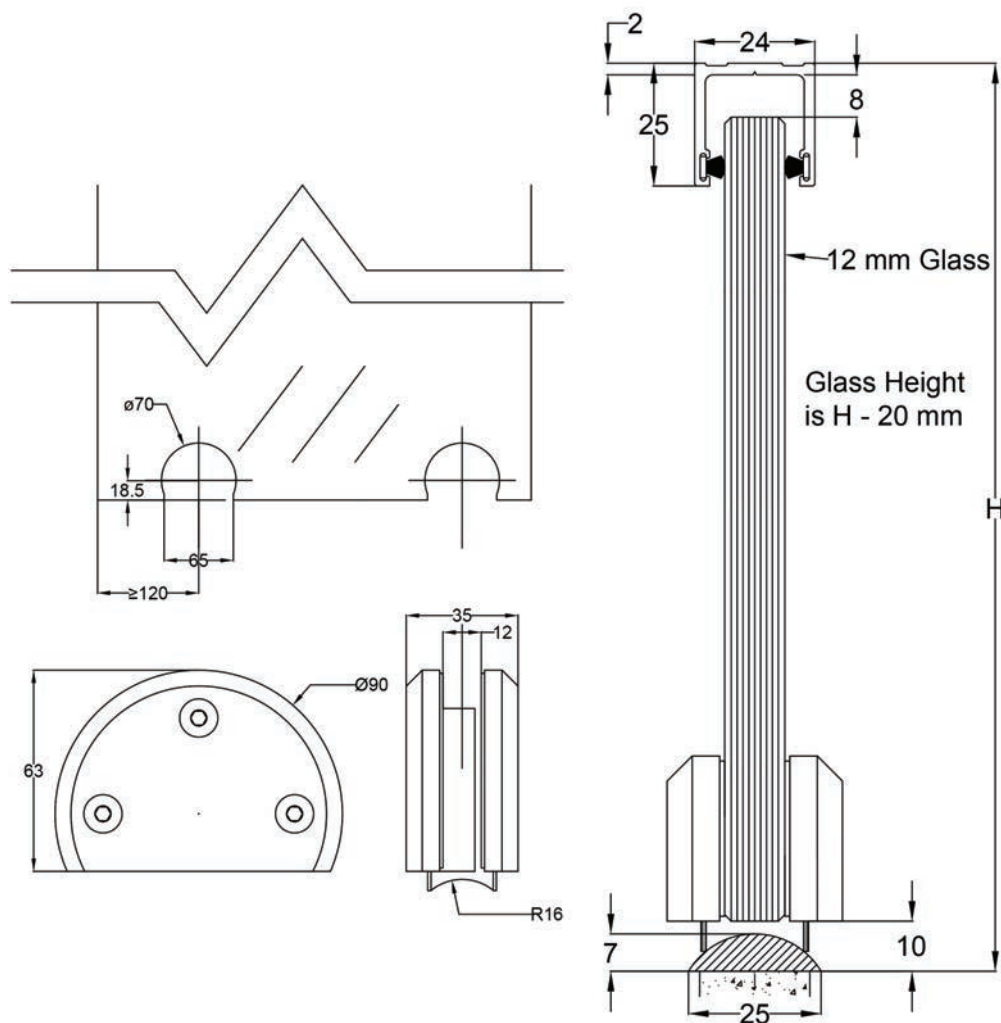
**ALSO AVAILABLE USING PATCH
FITTINGS - 8900A**

GHA8900H Stacking Door System



Natural anodise finish
No stacking bay required
Ideal for balconies or internal use
All seals supplied
Smooth easy operable doors



8300H Bottom Sliding Door System


40 Series Sliding Door



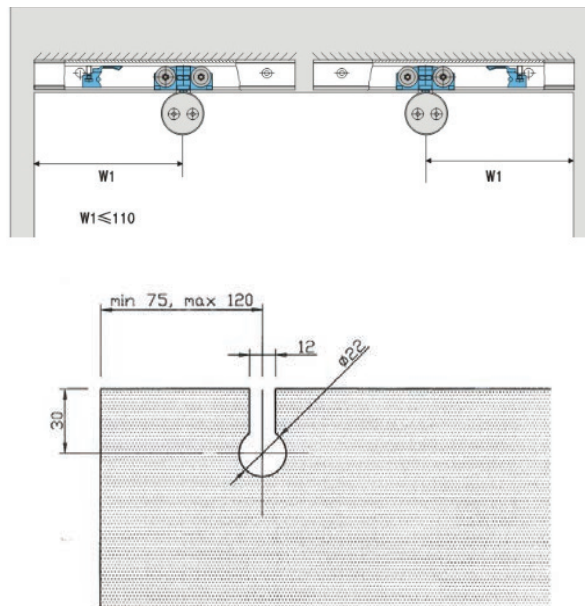
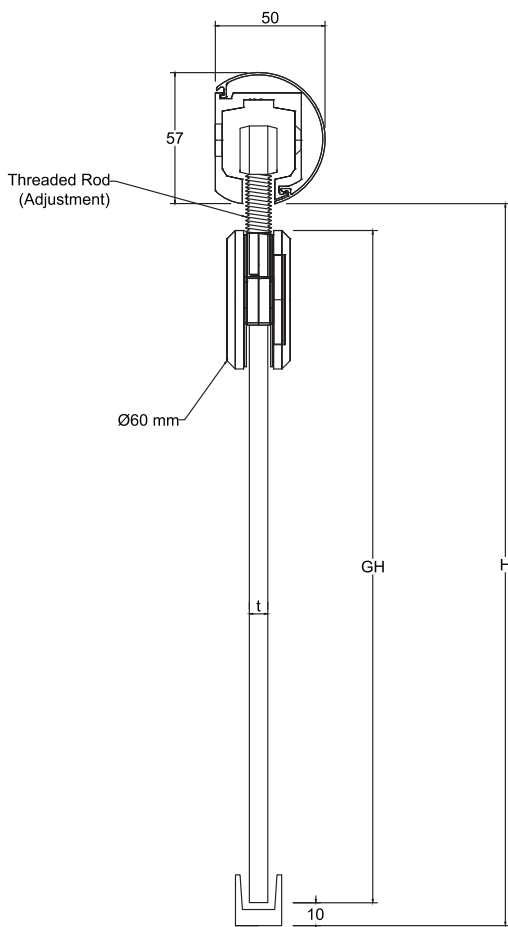
The 40 series range of sliding doors provides a comprehensive range of aluminium overhead tracks and roller types to suit most sliding doors including glass, wood and aluminium.

40-4 Sliding Track



The 40-4 track is designed for surface mounting to a wall and features a curved snap on cover to conceal the mounting screw holes.

A small selection of roller types, locks and handles is shown here. For further options and information please contact the sales team.

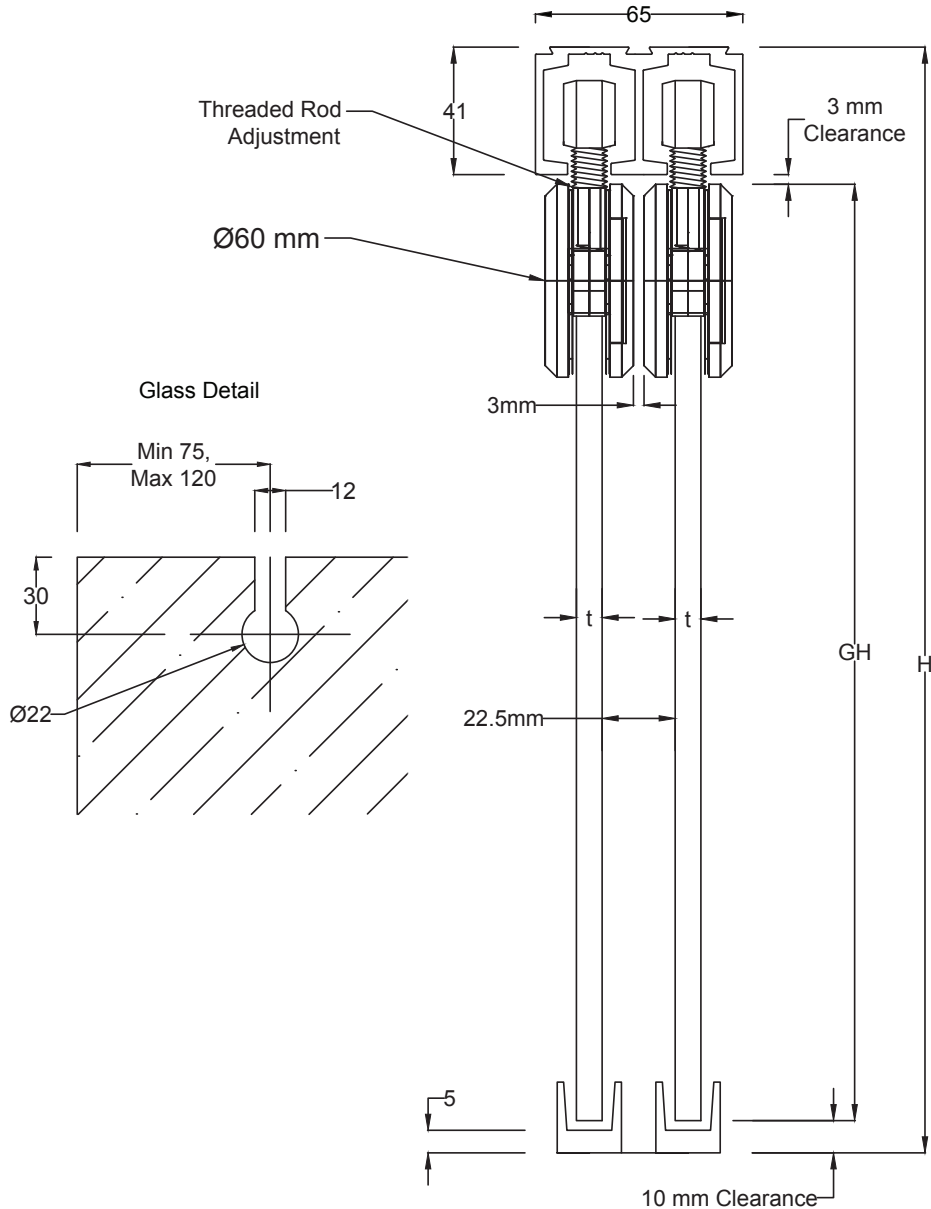


TECHNICAL DETAILS

- For installation with one or two panels fixed at ceiling;
- for 10 - 12 mm glass thickness
- Max. weight of door panels 90 kg
- Calculation of glass height
 $GH = H - 55$
 max. 3000 mm

GH = Glass height
 H = Total height
 t = Glass thickness

GHA DT-102 Ceiling Fix Double Sliding Track

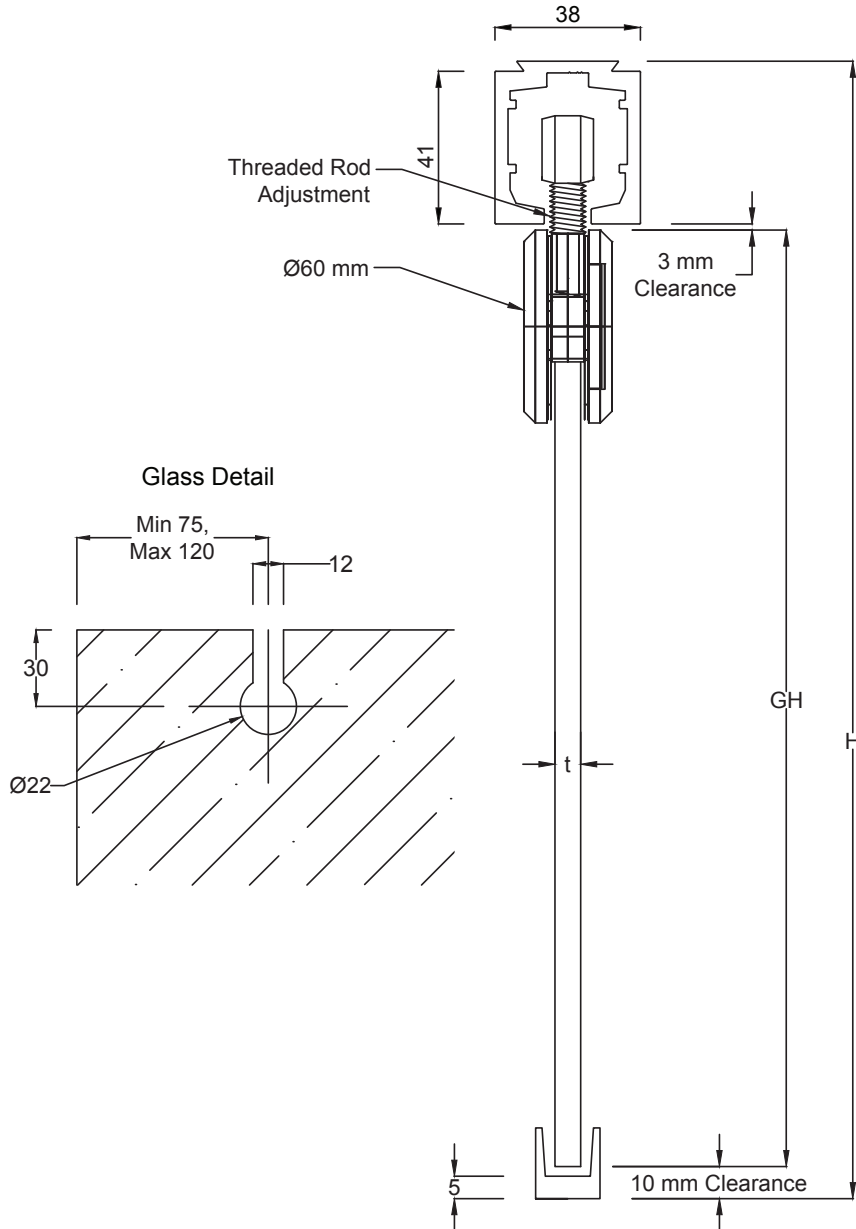


TECHNICAL DETAILS

- For installation with one or two panels fixed at ceiling; for 10 - 12 mm glass thickness
- Max. weight of door panels 90 kg
- Calculation of glass height
 $GH = H - 55$
 max. 3000 mm

GH = Glass height
 H = Total height
 t = Glass thickness

GHA DT-101 Ceiling Fix Single Sliding Track













TECHNICAL DETAILS





- For installation with one or two panels fixed at ceiling; for 10 - 12 mm glass thickness
- Max. weight of door panels 90 kg
- Calculation of glass height
 $GH = H - 55$
 max. 3000 mm

GH = Glass height
 H = Total height
 t = Glass thickness





Fittings

CODE		NOTES	GLASS CLEARANCES				DETAILS
			DT-101, 102, 103 Top of glass to u/s track		DT-104 Top of glass to u/s track		
			NOMINAL GAP	MAX/MIN GAP	NOMINAL GAP	MAX/MIN GAP	
SA-102		End cap for DT-101					
SA-103		Internal stop for all tracks					
SA-104R		End cap for DT-104					
SA-104L		End cap for DT-104					
SA-105		Bracket for mounting track DT-101, 102, 103 to wall					
SA-106-CH		Countersunk bracket for mounting all tracks to fixed glass panel					
SA-106-RH		Round head bracket for mounting all tracks to fixed glass panel					
SA-114		Internal 90 degree connection bracket for all tracks					
SA-115		Internal bracket to mount track to wall					
SG-01		Floor guide adjustable for 8, 10, 12, 15mm thick glass	10mm	Min 6.5mm Max 16mm	10mm	Min 6.5mm Max 16mm	22mm High 31mm Wide 44mm Long



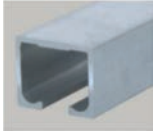

Tracks

CODE		NOTES	DETAILS
DT-101		Over head mounted	41mm High 38mm Wide
DT-102		Over head mounted double track	41mm high 65mm wide Roller centrelines 31mm
DT-103		Over head mounted side glazing pocket	41mm high 50mm wide Glazing pocket 13.9mm wide
DT-104		Wall mounted pre-drilled holes clip on cover	58mm high 48mm wide

Handles / Finger Pulls

CODE		NOTES	DETAILS
SH-16		Solid cast handle	73mm High 25mm Wide 33 proud from glass
SH-17		Solid cast handle	165mm High 24mm Wide 17 proud from glass
SH-19SQ		Cast square finger pull handle	50mm High 50mm Wide 12 proud from glass
SH-101		Cast finger pull handle	58mm Diameter 9 proud from glass









Series 220 Sliding Track System

CODE		DOOR WEIGHT
SW-222		300kg
SW-223		400kg
DT-221		Track Height 49.5mm Width 57.71mm
A01 Glazing Clamp		Patch Height 115mm Width 70mm

Sliding Door Locks

CODE	
LS-13	
LS-13k	
LS-14k	
LS-15k	

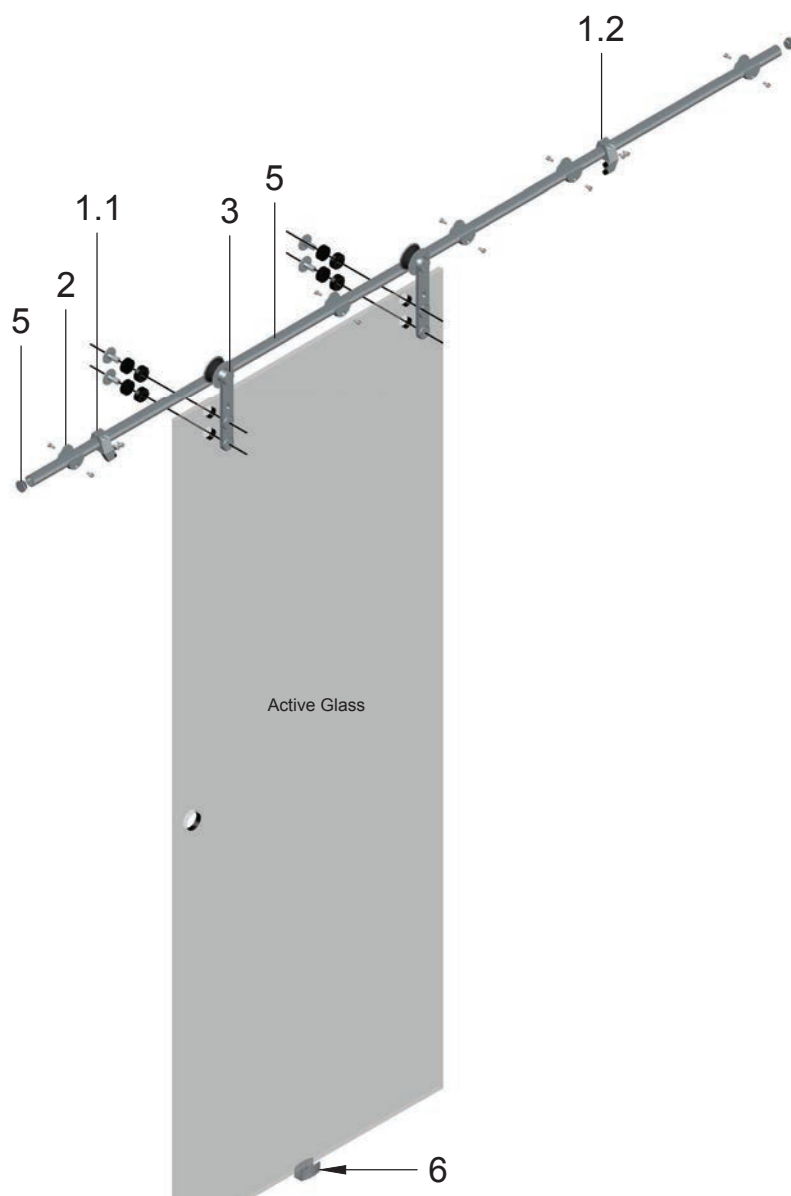
Sliding Door Locks (Cont'd)

CODE	
LS-20	
LS-21	
LS-56	
LS-56k	
LS-57	
LS-57k	
LS-58	
LS-58k	

Roller and clamping sets

CODE		NOTES	GLASS CLEARANCES				DETAILS
			DT-101, 102, 103 Top of glass to u/s track		DT-104 Top of glass to u/s track		
			NOMINAL GAP	MAX/MIN GAP	NOMINAL GAP	MAX/MIN GAP	
SR-100101-SS			5mm	Min 1mm Max 16mm <i>Can use longer threaded rod</i>	5mm	Min 1mm Max 10mm <i>Can use longer threaded rod</i>	90kg / Door Leaf (2 roller sets)
SR-101102			TBC	No adjustment	TBC	No adjustment	90kg / Door Leaf (2 roller sets)
SR-100103		Mounting of aluminium or timber doors / panels	17mm	Min 15mm Max 19mm <i>Can use longer threaded rod</i>	<i>Standard bolt not suited can use longer hex bolt</i>	<i>Standard bolt not suited can use longer hex bolt</i>	90kg / Door Leaf (2 roller sets)
SR-102104			5mm	Min 1mm Max 16mm <i>Can use longer threaded rod</i>	5mm	Min 1mm Max 10mm <i>Can use longer threaded rod</i>	90kg / Door Leaf (2 roller sets)
SR-102105			40mm	Min 34mm Max 53mm <i>Can use longer threaded rod</i>	40mm	Min 34mm Max 45mm <i>Can use longer threaded rod</i>	90kg / Door Leaf (2 roller sets)
SR-100114			27mm	Min 22mm Max 32mm <i>Can use longer threaded rod</i>	24mm	Min 24mm Max 24mm <i>Can use longer threaded rod</i>	90kg / Door Leaf (2 roller sets)

GHA-L10 Sliding Door Wall and Glass Mounts



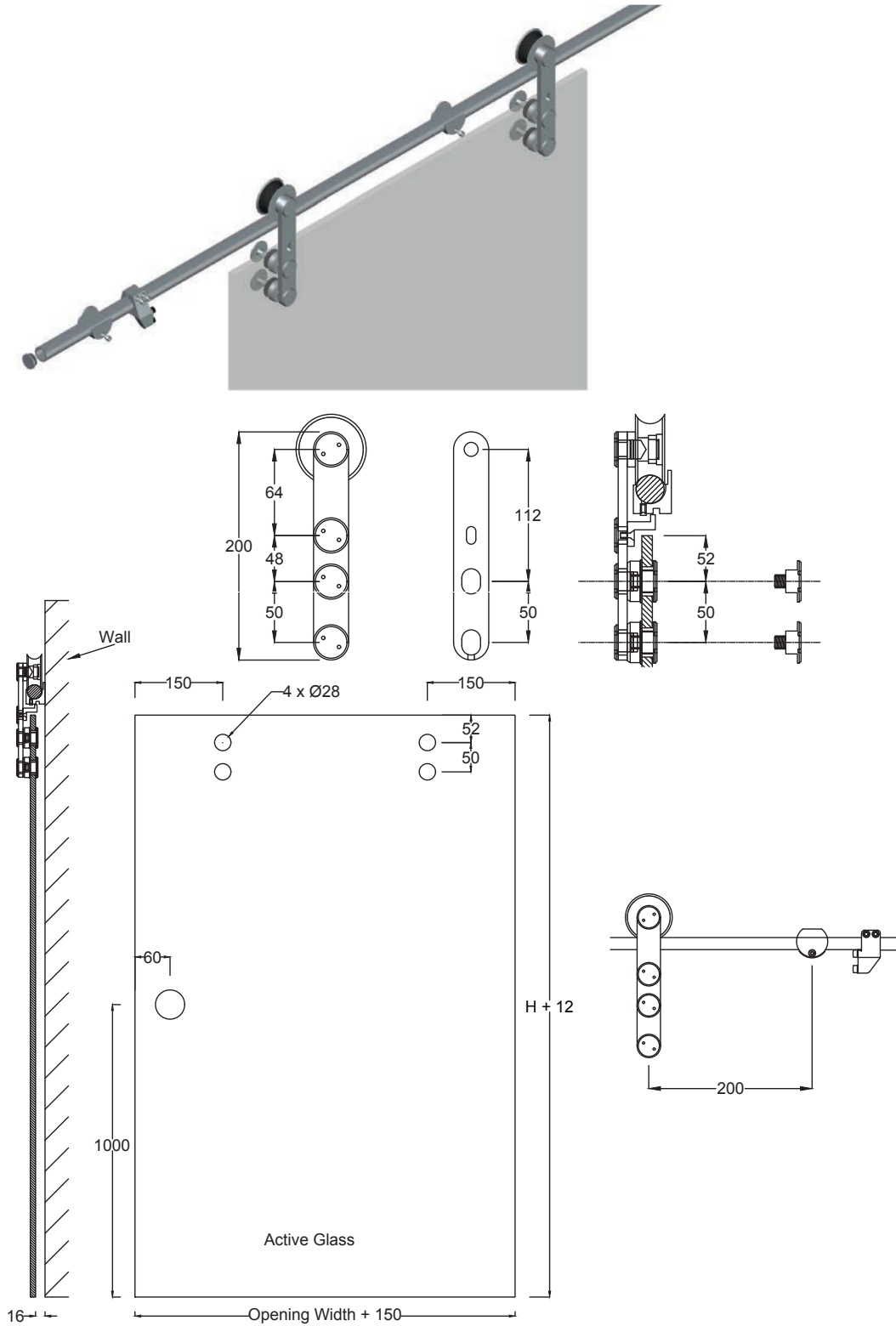
KIT CONTENTS

- 1.1 - SR913L - 1 piece
- 1.2 - SR913R - 1 piece
- 2 - TC101-25 - 5 pieces
- 3 - SD111 - 2 sets
- 4 - ST101 - 1 piece

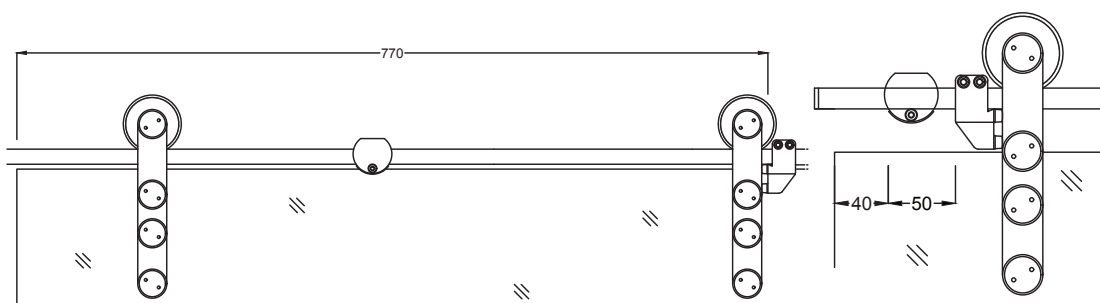
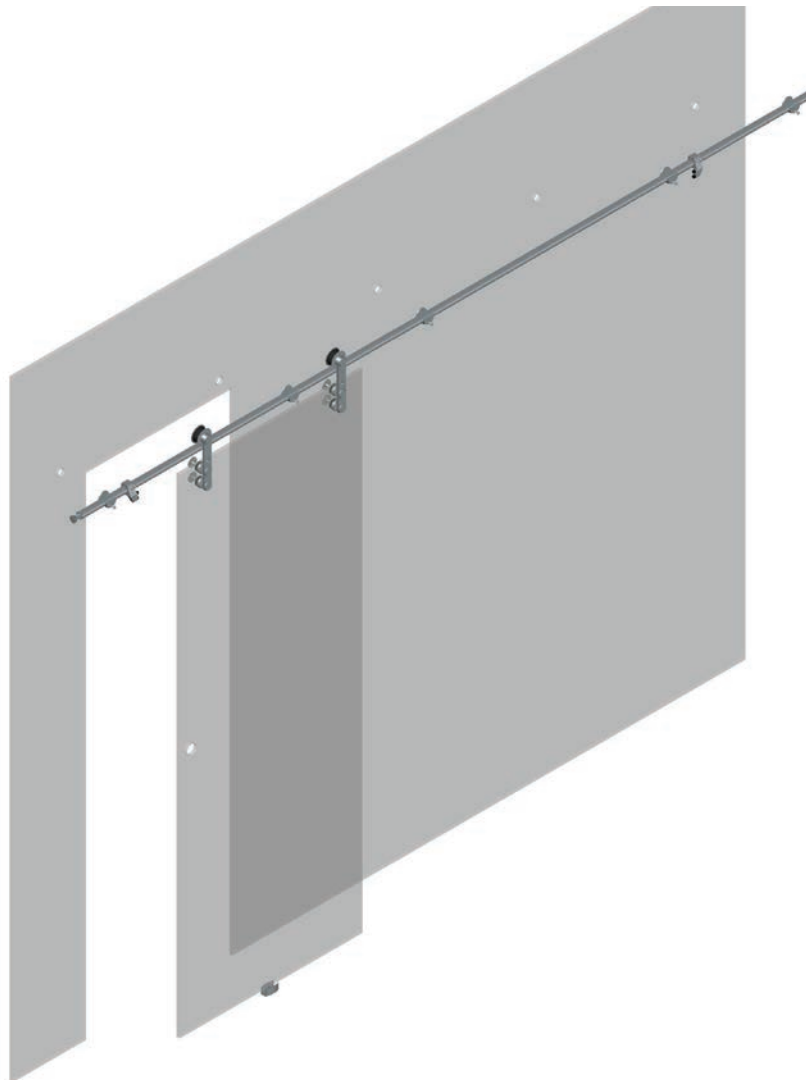
KIT CONTENTS

- 5 - END CAPS - 2 pieces
- 6 - FG201 - 1 piece

L10 Sliding Glass Door System



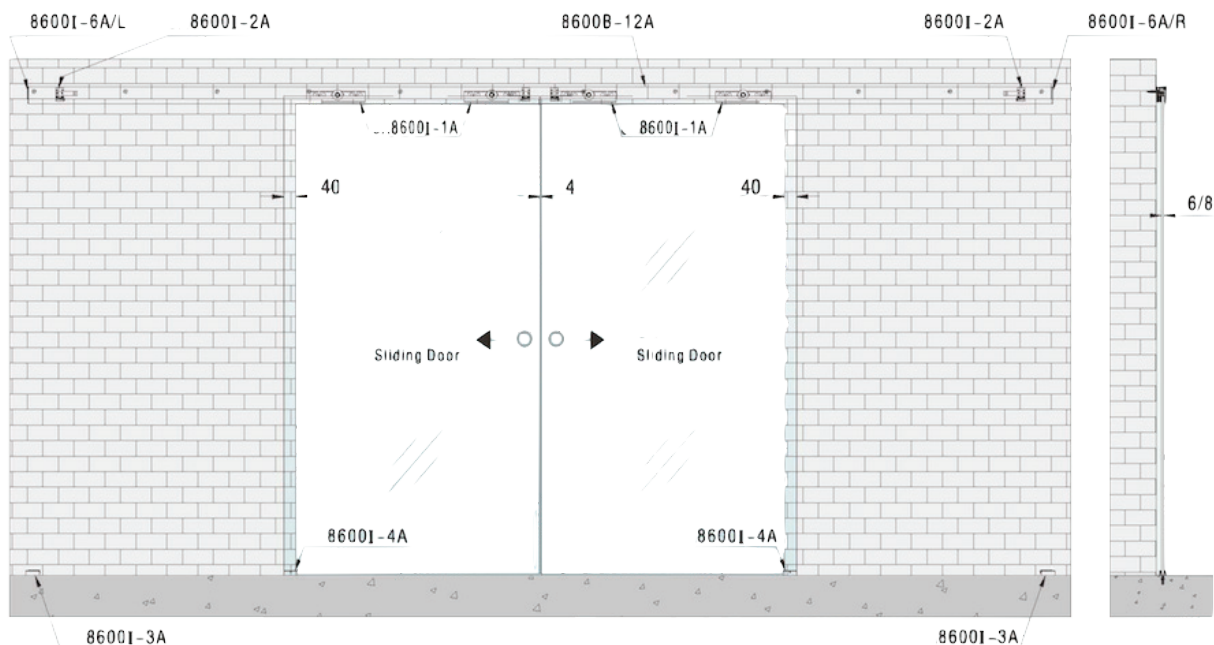
L10 Sliding Glass Door System



GHA8600I-A



GHA8600I-A Installation Instructions - Single Door Structure



GHA8600I-A Installation



GHA8600I-1A (4PCS)



GHA8600I-2A (4PCS)



GHA8600I-3A (2PCS)



GHA8600I-4A (2PCS)



GHA8600I-12A (1PC)



GHA8600I-6A/L (1PC)

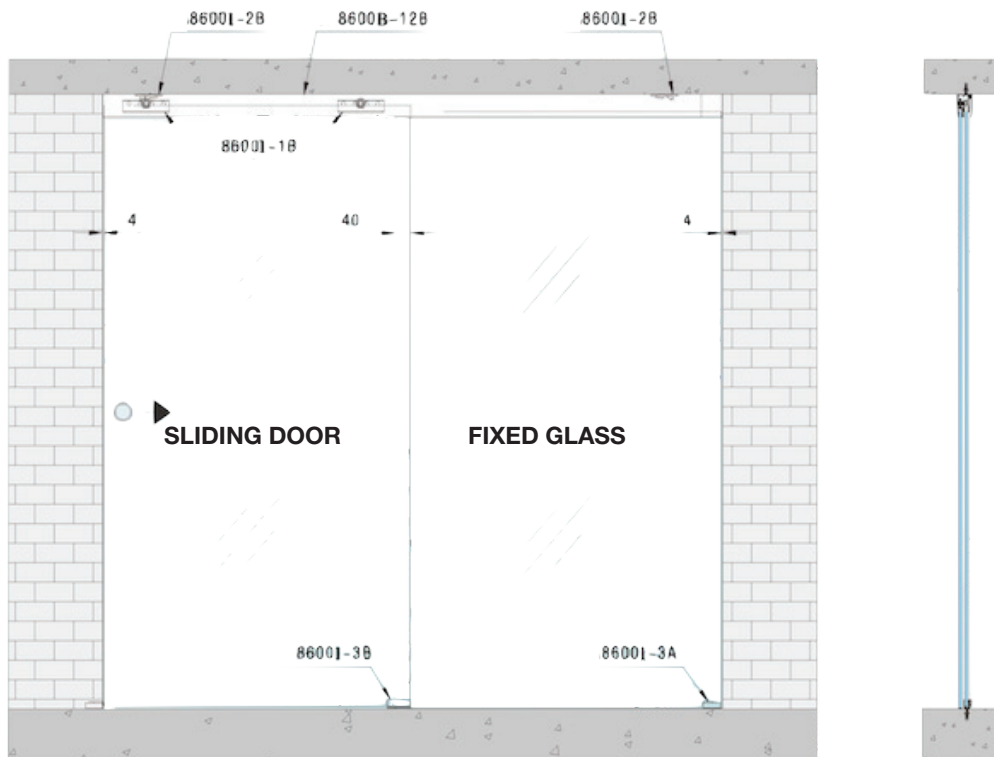


GHA8600I-6A/R (1PC)

GHA8699I-B



GHA8600I-B Installation Instructions - Single Door Structure



GHA8600I-B Installation



GHA8600I-1B (2PCS)



GHA8600I-2B (2PCS)



GHA8600I-3A (1PC)



GHA8600I-3B (1PC)



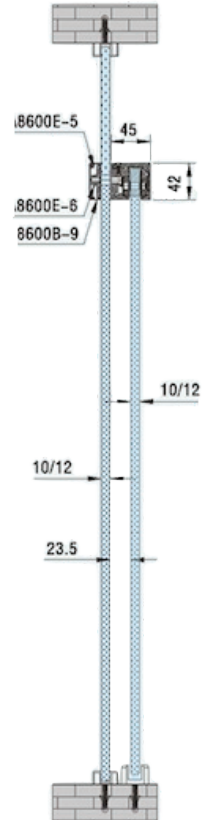
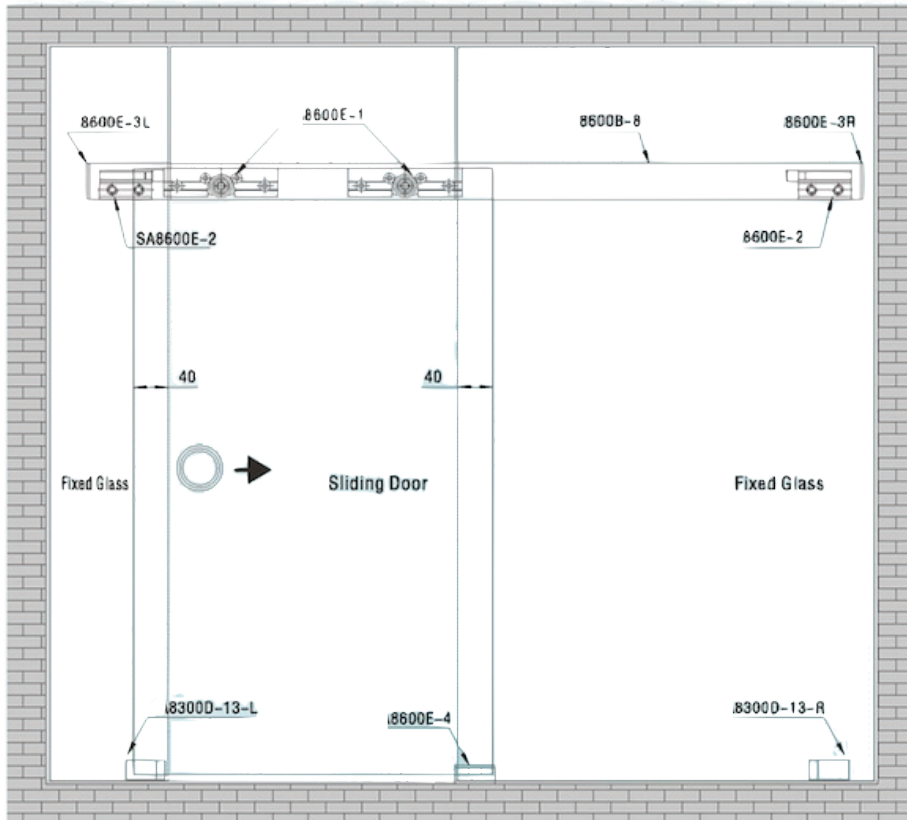
GHA8600B-12B (1PC)



GHA8600E-1



GHA8600E-1 Installation Instructions - Single Door Structure



GHA8600E-1 Installation



GHA8600E-1 (2PCS)



GHA8600E-2 (2PCS)



GHA8600E-3L (1PC)



GHA8600E-3R (1PC)



GHA8600E-4 (1PC)



GHA8600E-5 (2PCS)



GHA8600E-6 (7PCS)



GHA8600B-8 (1PCS)

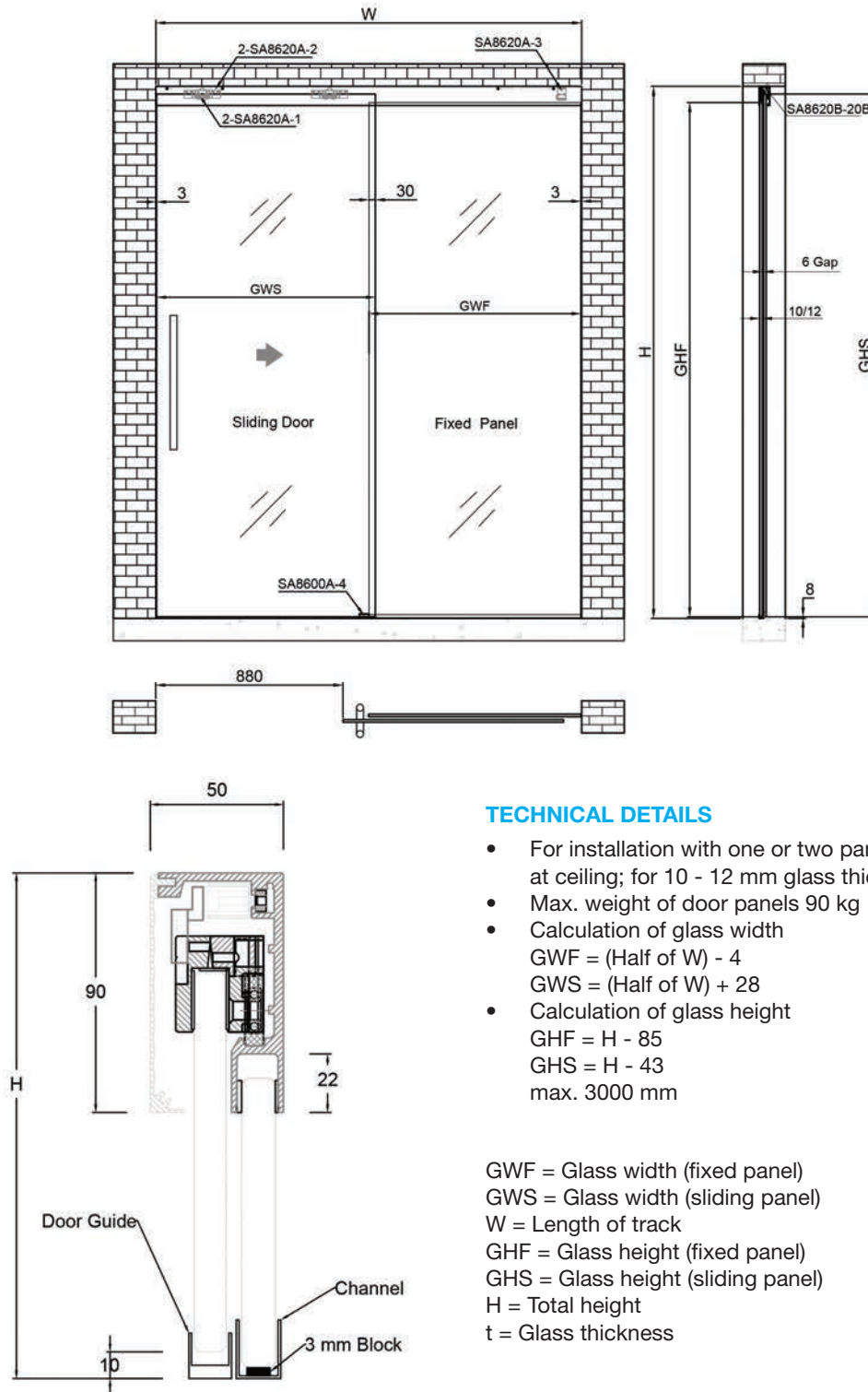


GHA8600B-9 (1PC)



GHA8300D-12L/R (1PC)

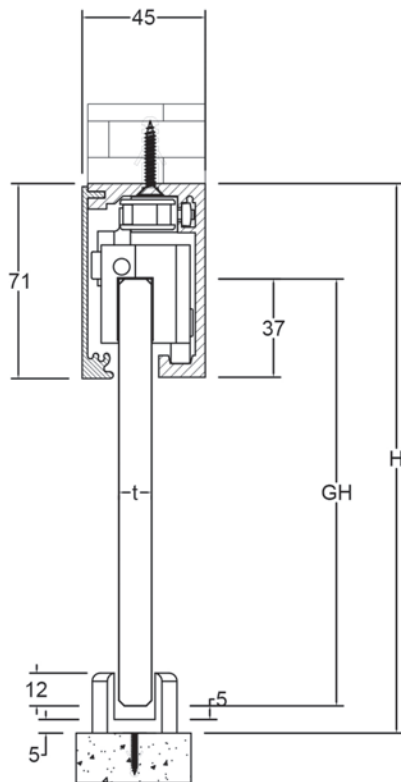
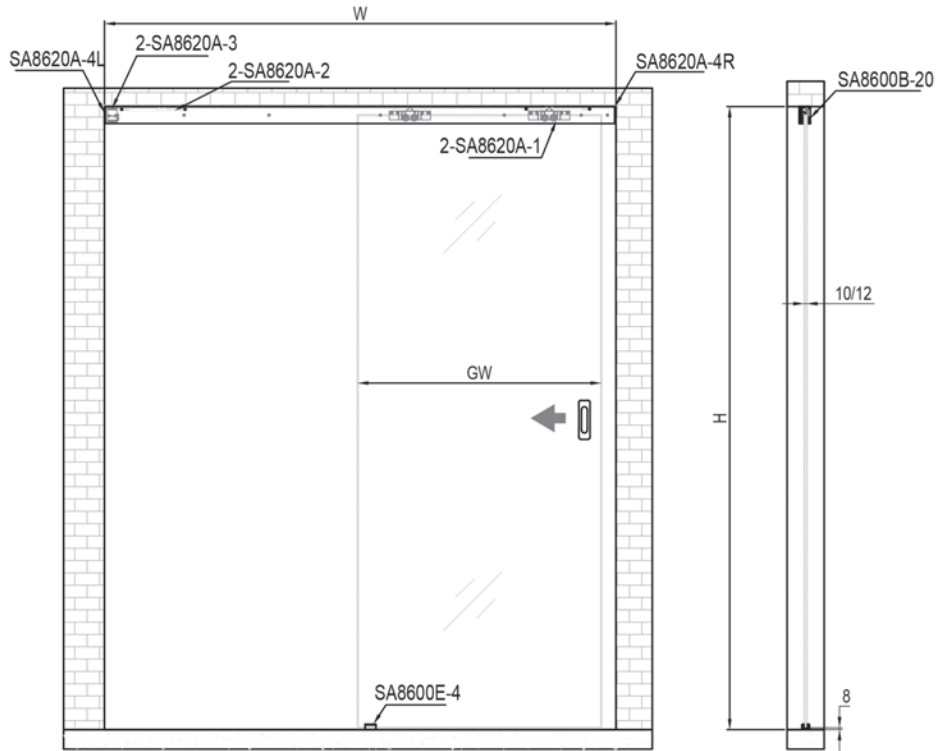
GHA8620A Single Door and Fixed Panel



GHA8600I-A



GHA8620A Head Fix Soft Close System

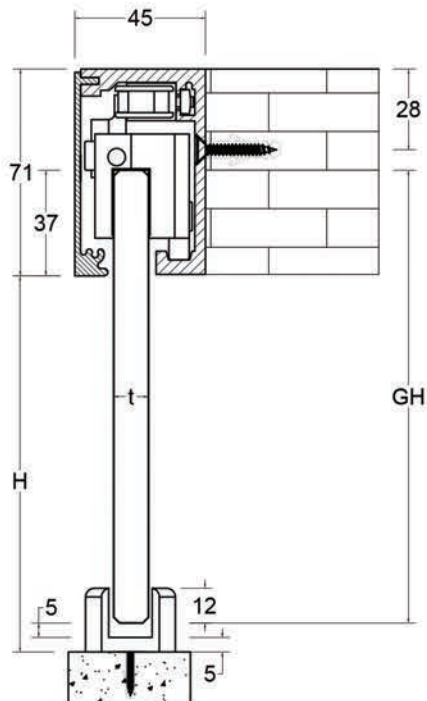
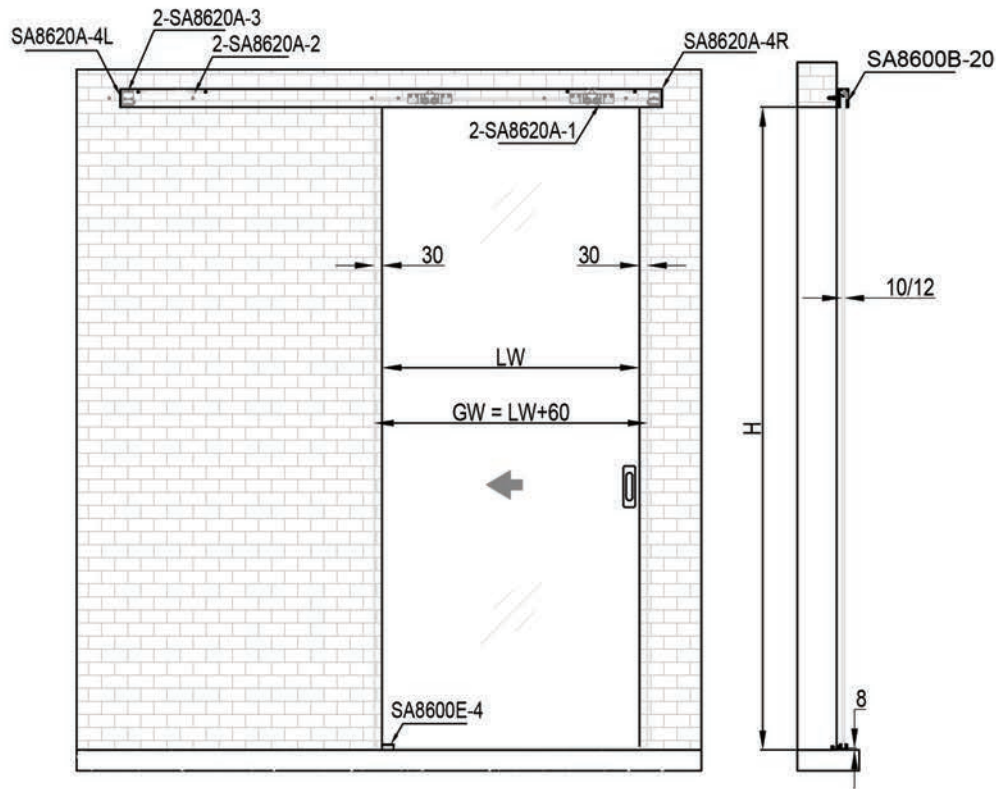


TECHNICAL DETAILS

- For installation with one or two panels fixed at ceiling; for 10 - 12 mm glass thickness
- Max. weight of door panels 90 kg
- Calculation of glass width
 $GW = \text{Half of } W$
- Calculation of glass height
 $GH = H - 44$
max. 3000 mm

GW = Glass width
W = Length of track
GH = Glass height
H = Total height
t = Glass thickness

GHA8620A Face Fix Soft Close System



TECHNICAL DETAILS

- For installation with one panel fixed at wall face; for 10 - 12 mm glass thickness
- Max. weight of door panels 90 kg
- Calculation of glass width
 $GW = LW + 60$
- Calculation of glass height
 $GH = H + 28$
max. 3000 mm

GW = Glass width
LW = Width of opening
GH = Glass height
H = Total height
t = Glass thickness

GHA8600I-A Installation Instructions - Single Door Structure



GHA8600I-1A (2PCS)



GHA8600I-2A (2PCS)



GHA8600I-3A (2PCS)



GHA8600I-4A (1PC)



GHA8600B-12A (1PC)



GHA8600I-6A/R (1PC)

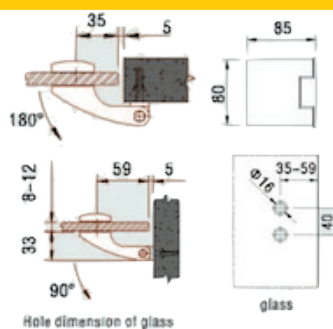


GHA8600I-6A/L (1PC)

GHA8700



GHA8700A-4A Frame Mounted Glass Door Hinge



GHATTM Top Track with Mohair

